



**JINYU**

Together And Further

## **PASSENGER AND LIGHT TRUCK TIRES CATALOGUE 2016**



**JINYU** TIRE





## ENTERPRISE INTRODUCTION

Jinyu is a key international player in the tire industry with a full range of premium value tire products, employing research-led tire patterns that cover a multitude of applications for day-to-day use. All products promise to provide outstanding quality backed with after-sales support from experienced and trusted industry professionals.

Jinyu was established in 1995 and has worked its way up the list to become one of the largest tire manufacturers in the world. Such staggering growth is attributed to the commitment Jinyu has to its three core values – quality products, services you can trust, and lifetime support. It carefully chooses only world-class partners and recognized leaders in their specific technological and rubber industry specialization to help create the quality products you see today.

### Jinyu Worldwide

Being specialized in the development and manufacturing of tires, Jinyu products can be found in countries all around the world. Four factories with a combined production capacity of 33 million PCR tires, 4.5 million TBR tires and 33k tons of OTR tires supply the continuous world-wide demand.

Jinyu holds itself accountable to "Think Globally, Act Locally," therefore it works closely with every distributor to ensure that the opportunity Jinyu products have are maximized within the market. Building on these strong foundations, Jinyu will continue to develop the most advanced and cost-effective platform for tire manufacturing and distribution, while utilizing its information technology and substantial research resources to help establish new tire patterns for all markets.

### Research and Development

For every small technological advancement Jinyu makes, the brand will offer greater value and further the enterprise. Jinyu invested hundreds of millions of RMB to establish a new technological R&D center as a testament to upholding technological development and advancement.

The vision of the center is to move the industry forward through the quest for improved technology and production of higher quality products; therefore, the center bases its research on raw material testing, new technology, semi-finished products detection, product inspection, and more. So far, the company has built one complete process development system for market research, product planning, formula testing, structure design, and product testing. Areas within the research center are also dedicated to independent research of all steel LTR and TBR tires, low rolling resistance, and noise reduction.

### Mission

Following the spirit of "common interests above all else," Jinyu's mission is to provide everyone involved with the Jinyu family with the finest products and services while driving continuous improvement, updated safety standards, and trust. Go Together and Further with Jinyu.



### Tire Maintenance and Safety

Tire maintenance can help to improve the performance and extend the life of your tires. More importantly, taking just a few minutes a month to inspect your tires can help you to avoid tire failures. Some of the key aspects of preventative maintenance include:

- Inflation Pressure** - It's important to maintain the correct inflation pressure in your tires as under-inflation or over-inflation may lead to a tire failure. The correct inflation pressure of your tires is specified by the vehicle manufacturer and is typically shown on the vehicle door ledge or in the owner's manual. Tires may lose air over time due to the permeability of rubber so it is important to check your tire pressure regularly, at least once a month including the spare. Ensure to check the pressure when the tires are cold (i.e. have not been driven on).
- Loading** - Do not overload your vehicle. Overloading creates excessive stress leading to heat generation and can eventually lead to a tire failure. Please check the tire placard or vehicle owner's manual for the maximum recommended load for your vehicle.

### Speed Rating

The speed symbol indicates the maximum speed rating at which a tire can carry a load corresponding to its Load Index under specific service conditions. \*\* For tires with speed symbols W and Y, "ZR" may or may not appear within the size designation. For tires with a maximum speed above 186 MPH, a "ZR" must appear in the size designation.

Examples of similar size markings, with and without service descriptions, and showing different maximum speeds are shown.

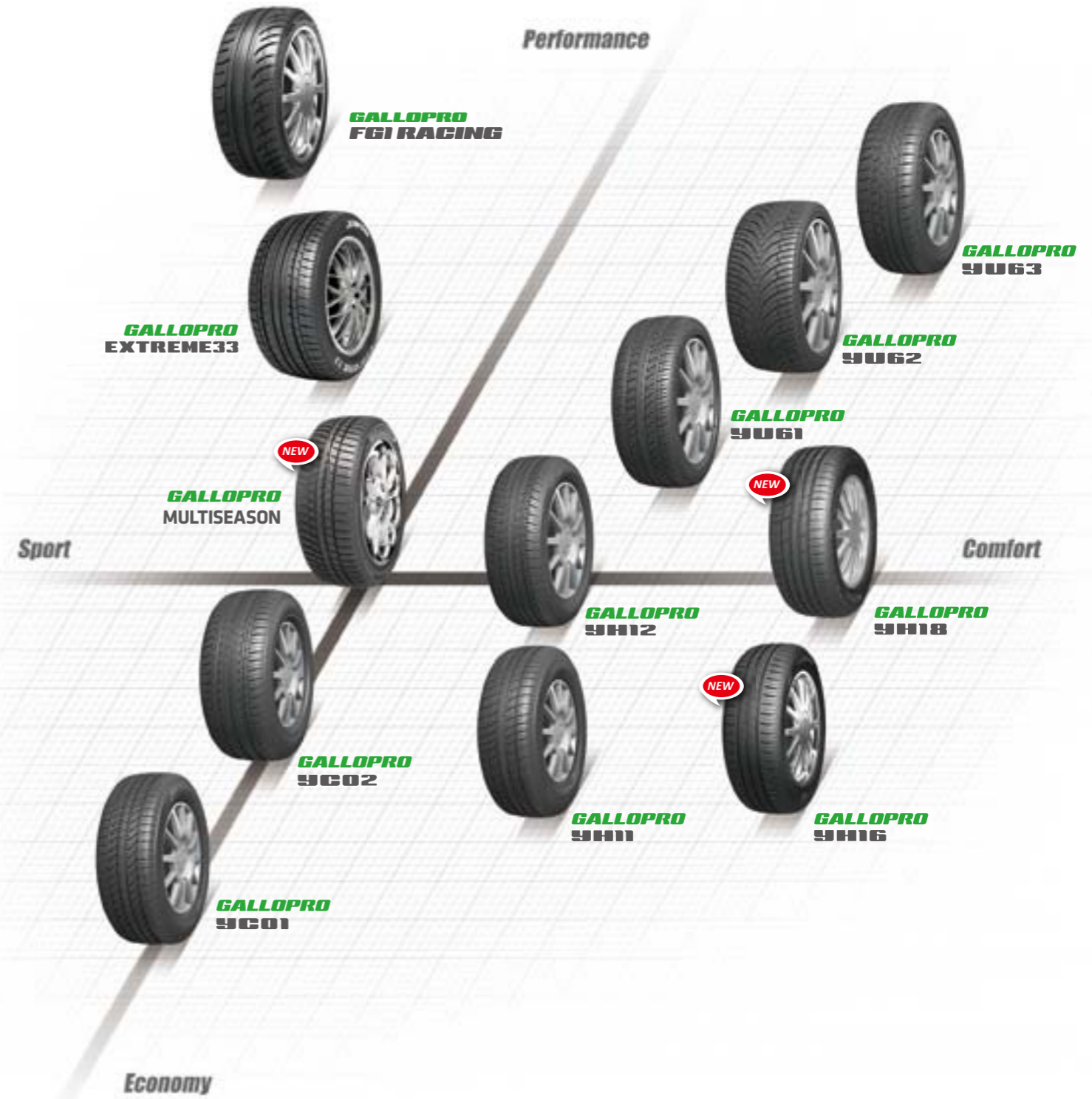
Speed Rating	Max. Speed	Speed Rating	Max. Speed
F	80 km/h	R	170 km/h
G	90 km/h	S	180 km/h
J	100 km/h	T	190 km/h
K	110 km/h	U	200 km/h
L	120 km/h	H	210 km/h
M	130 km/h	V	240 km/h
N	140 km/h	W	270 km/h
P	150 km/h	Y	300 km/h
Q	160 km/h	ZR	>240 km/h

# Marketing



## GALLOPRO SERIES

Passenger Tires

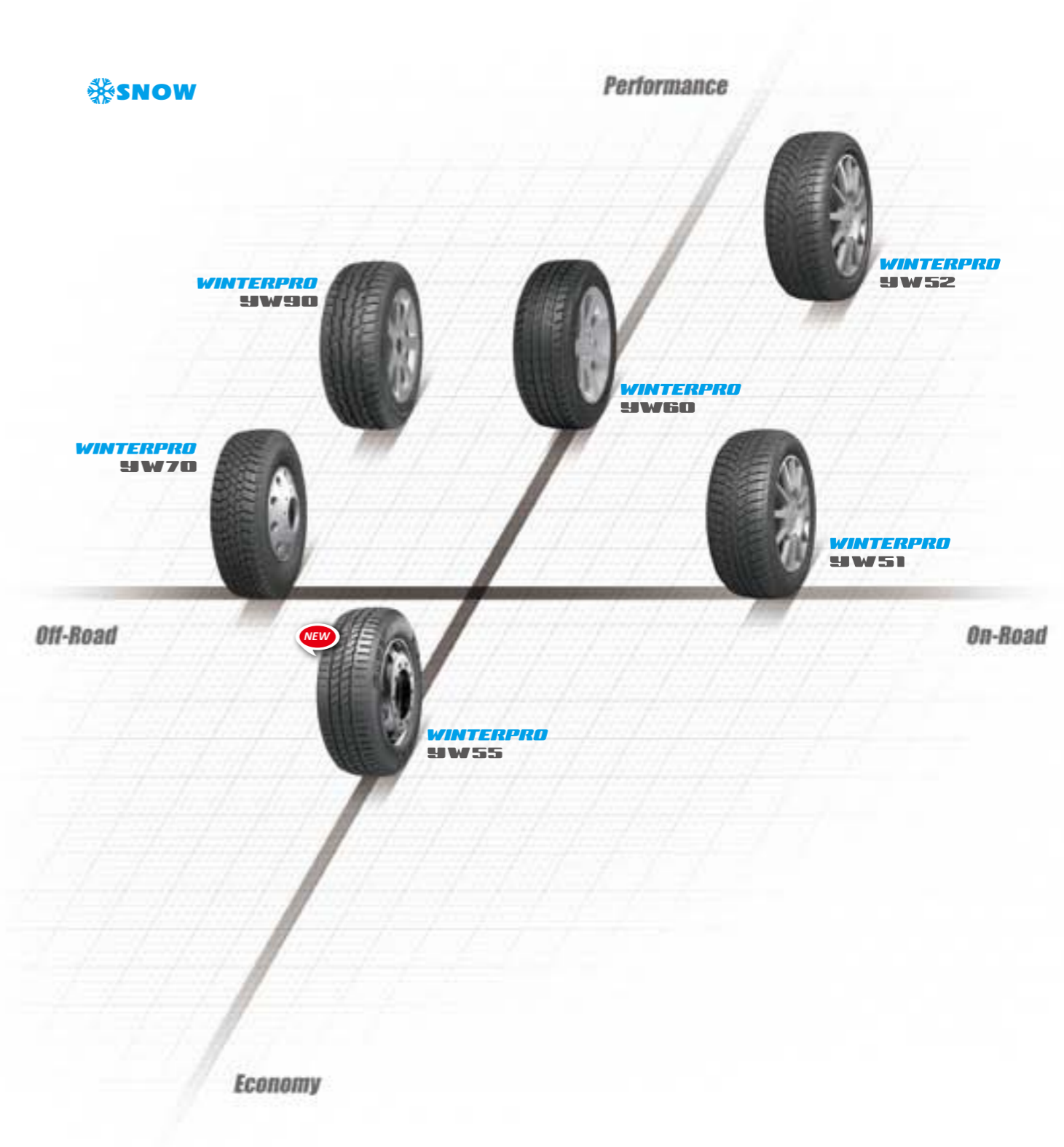
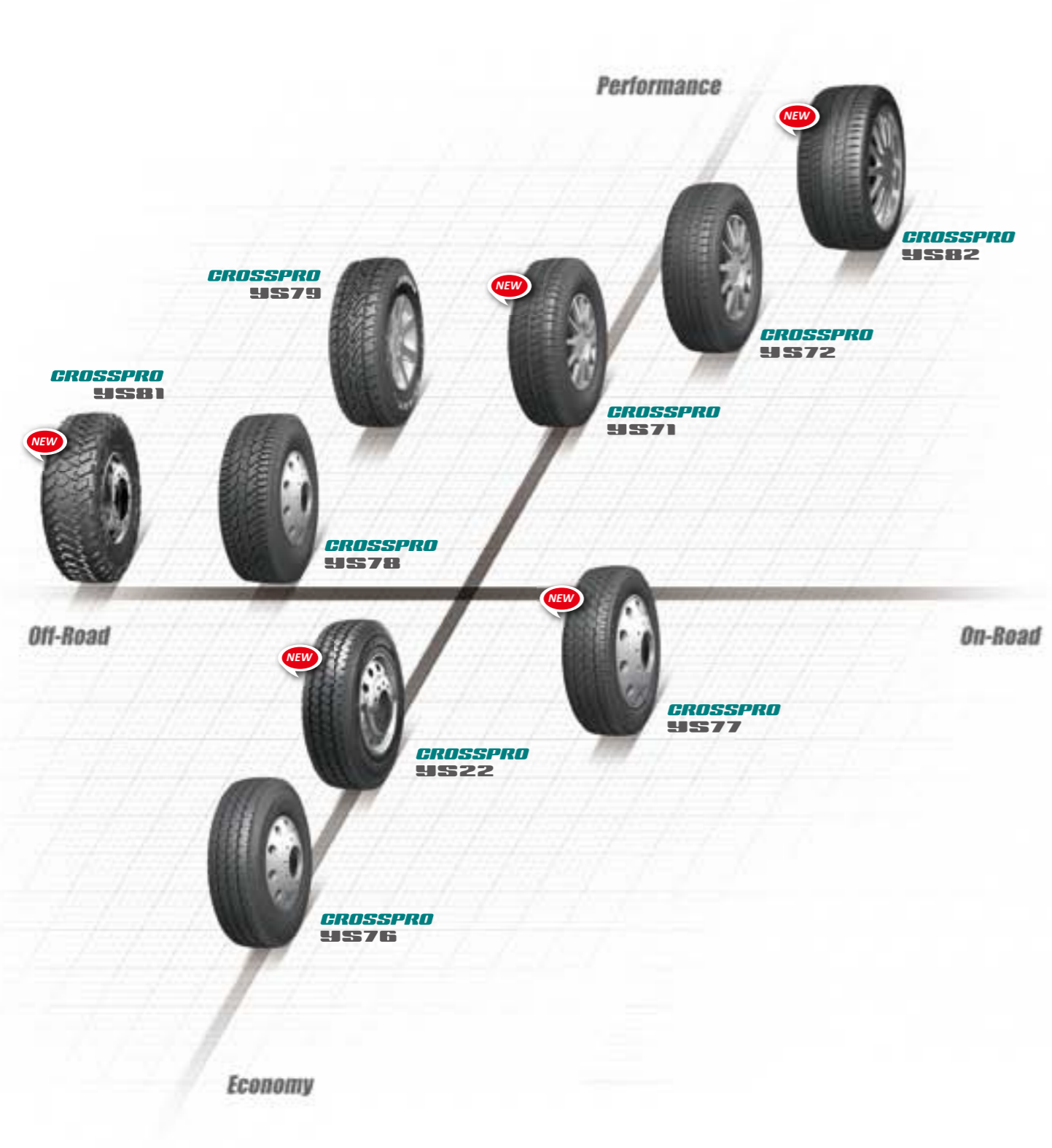


# CROSSPRO SERIES

SUV 4X4 and Van Tires

# WINTERPRO SERIES

Winter Tires



**GALLOPRO  
SERIES**

HP

<b>GALLOPRO Y601</b> P12	<b>GALLOPRO Y602</b> P14	<b>GALLOPRO YH11</b> P16	<b>GALLOPRO YH12</b> P18	<b>GALLOPRO YH16</b> P20	<b>GALLOPRO YH18</b> P22	<b>GALLOPRO EXTREME33</b> P24
						

UHP			ALL SEASON	
<b>GALLOPRO FGI RACING</b> P70	<b>GALLOPRO YU61</b> P26	<b>GALLOPRO YU62</b> P28	<b>GALLOPRO YU63</b> P30	<b>GALLOPRO MULTISEASON</b> P34
				

**WINTERPRO**  **SNOW**  
**SERIES**

WINTER

<b>WINTERPRO YWS1</b> P58	<b>WINTERPRO YWS2</b> P60	<b>WINTERPRO YWS5</b> P62	<b>WINTERPRO YW60</b> P64	<b>WINTERPRO YW70</b> P66	<b>WINTERPRO YW90</b> P68
					

**CROSSPRO  
SERIES**

SUV

<b>CROSSPRO YS71</b> P36	<b>CROSSPRO YS72</b> P38	<b>CROSSPRO YS78</b> P40	<b>CROSSPRO YS79</b> P42	<b>CROSSPRO YS81</b> P44	<b>CROSSPRO YS82</b> P46
					
H/T	H/T	A/T	A/T	M/T	H/T

LTR

<b>CROSSPRO YS22</b> P50	<b>CROSSPRO YS76</b> P52	<b>CROSSPRO YS77</b> P54
		

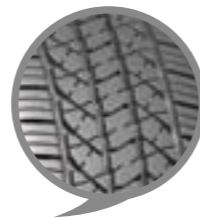
# YC01

High wear resistance, fuel economy, environmental protection, and value, YC01 is the first choice for both taxis and family cars.



● **Great Fuel Economy and Overall Performance**

An advanced tread design integrated with an improved formula and structure create a design made for families; offers comfort, safety, stability, and high cost-performance.



● **Fuel Efficient Environmental Protection**

Special tread formula efficiently decreases rolling resistance and reduces fuel consumption.

● **High Abrasion Resistance**

Application of highly reinforced tread, strengthened wire layers and deepened tire grooves ensure the perfect abrasion resistance and enhanced lifetime.



	SIZE	LI	SS	Overall Diameter	Section Width	Standard Rim	Tread Depth	Max.Load	Max.Pressure
				mm	mm		mm		
12	155/80R12	77	T	553	157	4.50B	7.7	412	300
	145/70R12	69	T	509	150	4.50B	7.7	325	300
13	165/70R13	79	H	562	170	5.00B	8	437	300
	175/70R13	82	H	576	177	5.00B	8	475	300
	185/70R13	86	H	590	189	5.50B	8	530	300
14	165/70R14	81	H	588	170	5J	8.2	462	300
	185/60R14	82	H	578	189	5 ½J	8.4	475	300
	195/60R14	86	H	590	201	6J	8.5	530	300

**LTR**

	SIZE	Level	LI	SS	Overall Diameter	Section Width	Standard Rim	Tread Depth	Max.Load		Max.Pressure
					mm	mm		mm	S(kg)	D(kg)	KPa
13	165/70R13LT	8	94/92	S	562	170	5.00B	8	670	630	450

● XL Extra Load   LI Load Index   SS Speed Symbol

# Y602

A tire specially made for taxis to offer low rolling resistance and higher mileage.



**Fuel Saving**

Outstanding wear-proof compound and high-strength steel belt adopted by the tread will effectively reduce rolling resistance and fuel consumption.

**Drainage**

Three circumferential main grooves contribute to efficient drainage on wet roads.

**Off-Road**

Wider tread and deeper grooves ensure excellent endurance and long life.



	SIZE	LI	SS		Overall Diameter	Section Width	Standard Rim	Tread Depth	Max.Load	Max.Pressure
					mm	mm		mm	kg	KPa
13	155/65R13	73	T		532	157	4.50B	7.5	365	300
	175/70R14	84	T		602	177	5J	8.5	500	300
	175/65R14	86	T	XL	584	177	5 J	8	530	340
14	185/65R14	86	H		596	189	5 1/2J	8.5	530	300
	185/60R14	82	H		578	189	5.5J	8.5	475	300
	195/60R14	86	H		590	201	6J	8.5	530	300
15	185/65R15	92	H	XL	621	189	5.5J	8.5	630	340
	195/65R15	91	V		635	201	6J	8.5	615	300
	205/65R15	94	V		647	209	6J	8.5	670	300
16	185/60R15	88	H	XL	603	189	5 1/2J	8.5	560	340
	195/60R15	88	V		615	201	6J	8.5	560	300
	205/60R15	91	V		627	209	6J	8.5	615	300
	195/55R15	85	V		595	201	6J	8.5	515	300
16	205/55R16	94	V	XL	632	214	6 1/2J	8.5	670	340

● XL Extra Load   LI Load Index   SS Speed Symbol

# YH11

A genuine all terrain tire suitable for economical family cars, which provides marvelous performance on wet and dry roads.



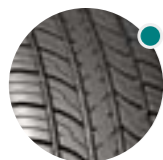
**UTQG--360/A/A**



**Safety** ●  
Four circumferential main grooves contribute to efficient water drainage and provide great traction on wet roads; all-season design and enhanced tread compound ensure an even pressure under all weather conditions and excellent performance on both straight and winding pavements.

**Silence** ●  
Optimally designed pattern order with varying pitches to diminish vibration and noise.

**Comfort** ●  
Unique patter design ensures good vibration absorption to increase driving comfort.



**Handling** ●  
Lateral grooves on the shoulder and crown help to provide great traction and handling stability, as well as ensure exact cornering and braking. Enhanced center rib ensures driving stability by improving handling efficiency.

	SIZE	LI	SS	Overall Diameter	Section Width	Standard Rim	Tread Depth	Max.Load	Max.Pressure
				mm	mm		mm	kg	KPa
12	155/70R12	73	T	523	157	4.50B	7	365	300
	155/80R13	79	T	578	157	4.50B	8	437	300
	165/80R13	83	T	594	165	4.50B	8	487	300
	155/70R13	75	T	548	157	4.50B	7.3	387	300
	165/70R13	79	T	562	170	5.00B	7.5	437	300
13	165/70R13	83	T XL	562	170	5.00B	7.5	487	340
	175/70R13	82	T	576	177	5.00B	8	475	300
	185/70R13	86	T	590	189	5.50B	7.8	530	300
	155/65R13	73	T	532	157	4.50B	7.6	365	300
	165/65R13	77	T	544	170	5.00B	7.6	412	300
	175/60R13	77	T	540	177	5.00B	7.6	412	300
	185/60R13	80	T	552	189	5.50B	7.6	450	300
14	165/70R14	81	T	588	170	5J	7.5	462	300
	165/70R14	85	T XL	588	170	5J	7.5	515	340
	175/70R14	84	T	602	177	5J	8	500	300
	175/70R14	88	T XL	602	177	5J	8	560	340
	185/70R14	88	H	616	189	5 ½J	8	560	300
	195/70R14	91	T	630	201	6J	8.4	615	300
	205/70R14	98	T XL	644	209	6J	8.5	750	340
15	175/65R14	82	T	584	177	5J	8	475	300
	175/65R14	86	T XL	584	177	5J	8	530	340
	165/60R14	75	H	554	170	5J	7.6	387	300
	205/70R15	96	T	669	209	6J	8.5	710	300
16	215/60R16	95	V	664	221	6 ½J	8.8	690	300
	225/60R16	98	V	676	228	6 ½J	8.9	750	300

● XL Extra Load LI Load Index SS Speed Symbol



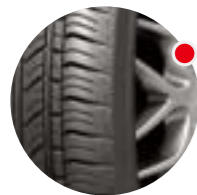
# YH12

A pattern specially designed to elevate the performance of traction and manipulation on wet and dry roads.


**UTQG--400/A/A**


### Hydroplaning Resistance

Optimal four channel grooves maximize hydroplaning resistance, ensure quick drainage on wet roads and promise a safe drive on rainy days. A silicon tread compound upgrades performance and ensures safe driving on pavement.



### Stability

Special bead design ensures closer contact between inflated tire and the rim, avoids flying up of the tire toe, and enhances safety.

### Handling

Center rib upgrades maneuverability, braking performance, and increases grip and operating stability. Wider tire-to-road surface contact improves sticking force on wet and dry pavements. Enhanced blocks upgrade steering, braking, and provides better maneuverability.



### Comfort

Diverse block distribution upgrades softness while ensuring tread strength to enhance shock absorption and increase driving comfort.

### Silent

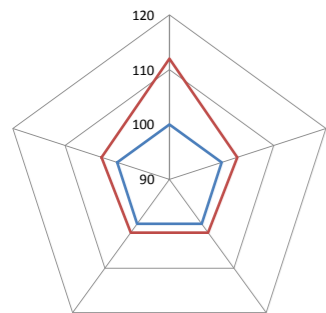
Diverse and irregular pitch order decreases vibrations emitted from the tire to reduce noise.



	SIZE	LI	SS	Overall Diameter	Section Width	Standard Rim	Tread Depth	Max. Load	Max. Pressure	
				mm	mm		mm	kg	KPa	
14	165/65R14	79	T	570	170	5J	7.6	437	300	
	175/65R14	82	T	584	177	5J	8	475	300	
	175/65R14	86	T	584	177	5J	8	530	340	
	185/65R14	86	H	596	189	5 1/2J	8	530	300	
	195/65R14	89	H	610	201	6J	8	580	300	
	175/60R14	79	H	566	177	5J	8	437	300	
	185/60R14	82	H	578	189	5 1/2J	8.4	475	300	
	195/60R14	86	H	590	201	6J	8.4	530	300	
	205/60R14	88	T	602	209	6J	8	560	300	
	185/55R14	80	V	560	194	6J	8	450	300	
	185/50R14	77	V	542	194	6J	8	412	300	
	185/80R14	91	T	652	184	5 J	8	615	300	
	215/70R15	98	H	683	221	6 1/2J	8.5	750	300	
	175/65R15	84	H	609	177	5J	8	500	300	
175/65R15	88	H	609	177	5J	8	560	340		
185/65R15	88	H	621	189	5 1/2J	8	560	300		
185/65R15	92	H	621	189	5 1/2J	8	630	340		
195/65R15	91	H	635	201	6J	8	615	300	RWL	
195/65R15	95	T	635	201	6J	8	690	340		
205/65R15	94	V	647	209	6J	8.5	670	300		
215/65R15	96	V	661	221	6 1/2J	8.8	710	300		
185/60R15	84	H	603	189	5 1/2J	8	500	300		
185/60R15	88	H	603	189	5 1/2J	8	560	340		
195/60R15	88	V	615	201	6J	8.4	560	300		
205/60R15	91	V	627	209	6J	8.5	615	300		
205/60R15	95	H	627	209	6J	8.5	690	340		
215/60R15	98	V	639	221	6 1/2J	8.5	750	340		
225/60R15	96	V	651	228	6 1/2J	8.6	710	300		
175/55R15	77	T	573	182	5 1/2J	7.8	412	300		
185/55R15	82	V	585	194	6J	8	475	300		
195/55R15	85	V	595	201	6J	8	515	300		
195/50R15	82	V	577	201	6J	8	475	300		
205/50R15	86	V	587	214	6 1/2J	8	530	300		
205/50R15	89	V	587	214	6 1/2J	8	580	340		
195/45R15	78	V/W	557	195	6 1/2J	7.8	425	300		
215/65R16	98	H	686	221	6 1/2J	8.8	750	300		
195/60R16	89	V	640	201	6J	8.4	580	300		
205/60R16	92	V	652	209	6J	8.2	630	300		
205/60R16	96	V	652	209	6J	8.2	710	340		
215/60R16	95	V	664	221	6 1/2J	8.8	690	300		
225/60R16	98	V	676	228	6 1/2J	8.6	750	300		
225/60R16	102	V	676	228	6 1/2J	8.6	850	340		
235/60R16	100	V	688	240	7J	8.8	800	300		
185/55R16	83	H	610	194	6J	8	487	300		
195/55R16	87	V	620	201	6J	8	545	300		
195/55R16	91	V	620	201	6J	8	615	340		
205/55R16	91	V	632	214	6 1/2J	8	615	300		
205/55R16	94	V	632	214	6 1/2J	8	670	340		
195/50R16	88	V	602	201	6J	8	560	340		
195/45R16	80	V	582	195	6 1/2J	7.8	450	300		
195/45R16	84	W	582	195	6 1/2J	7.8	500	340		
205/45R16	87	V	590	206	7J	8	545	340		
225/65R17	102	H	724	228	6 1/2J	8.4	850	300		
225/60R17	98	T	702	228	6 1/2J	9.5	750	300		
225/60R17	99	T	702	228	6 1/2J	9.5	775	300		
215/55R17	94	V	668	226	7J	8.2	670	300		
215/55R17	98	V	668	226	7J	8.2	750	340		
235/55R17	98	H	690	245	7 1/2J	9.5	750	300		
235/55R17	99	H	690	245	7 1/2J	9.5	775	300		

● XL Extra Load LI Load Index SS Speed Symbol ● RWL; Raised White Letter

# YH16



— Existing product — Gallopro YH16

● **Closed shoulder**

Handling performance has been improved thanks to a strengthened shoulder block.



● **Stabilization**

A pair of center band ribs and solid shoulder blocks maintain stable contact patches during straight running, turns, and cornering to enhance braking and stability.



● **Safety**

Three wide circumferential grooves with wave-like sipes prevent hydroplaning and enhance grip on wet roads.

● **Special Compounds**

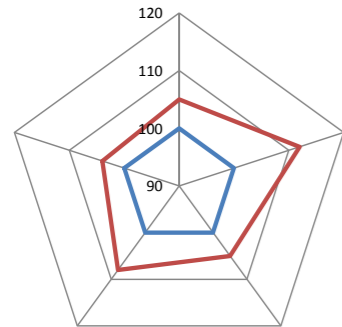
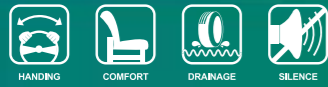
The specially formulated compounds are eco friendly, highly fuel efficient and long lasting.

	SIZE	LI	SS	Overall Diameter	Section Width	Standard Rim	Tread Depth	Max.Load	Max.Pressure	UTQG	
				mm	mm		mm	kg	KPa		
13	145/80R13	75	T	562	145	4.00B	7	387	300	360/A/A	
	155/80R13	79	T	578	157	4.50B	7	437	300	360/A/A	
	165/80R13	83	T	594	165	4.50B	7.2	487	300	360/A/A	
	145/70R13	71	T	534	150	4.50B	7	345	300	360/A/A	
	155/70R13	75	T	548	157	4.50B	7	387	300	360/A/A	
	165/70R13	79	T	562	170	5.00B	7.2	437	300	360/A/A	
	165/70R13	83	T	XL	562	170	5.00B	7.2	487	340	360/A/A
	175/70R13	82	T		576	177	5.00B	7.2	475	300	360/A/A
	185/70R13	86	T		590	189	5.50B	7.4	530	300	360/A/A
	155/65R13	73	T		532	157	4 1/2J	7.3	365	300	360/A/A
14	165/65R13	77	T	544	170	5.00B	7.2	412	300	360/A/A	
	165/80R14	85	T	620	165	4 1/2J	7.2	515	300	360/A/A	
	165/70R14	85	T	XL	588	170	5J	7.2	515	340	360/A/A
	175/70R14	88	T	XL	602	177	5J	7.2	560	340	360/A/A
	185/70R14	88	T		616	189	5 1/2J	7.4	560	300	360/A/A
	195/70R14	91	T		630	201	6J	7.4	615	300	360/A/A
	155/65R14	75	T		558	157	4 1/2J	7	387	300	360/A/A
	165/65R14	79	T		570	170	5J	7.2	437	300	360/A/A
	175/65R14	86	T	XL	584	177	5J	7.2	530	340	360/A/A
	185/65R14	86	H		596	189	5 1/2J	7.4	530	300	360/A/A
195/65R14	89	H		610	201	6J	7.4	580	300	360/A/A	
165/60R14	75	H		554	170	5J	7.2	387	300	360/A/A	
185/60R14	82	H		578	189	5 1/2J	7.4	475	300	360/A/A	
195/60R14	86	H		590	201	6J	8	530	300	360/A/A	

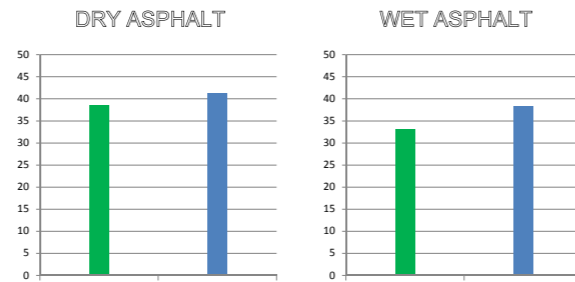
● XL Extra Load LI Load Index SS Speed Symbol

# YH18

**NEW**



— Gallopro YH18 — Existing product



**Safety**  
Thin strips within the groove accelerate heat dissipation and the drainage performance in wet conditions to guarantee superior performance while driving.



- **Hydroplaning Resistance**  
Excellent braking and grip on wet roads with optimal water drainage offered by four straight grooves.
- **High Performance Safety**  
The unique asymmetric pattern design featured with three uniform center ribs and blocks that maximize the effective footprint area making it superb in cornering and stability on dry roads.
- **Environmental**  
Environmentally friendly compound formulation with HD Silica and advanced SBR to ensure safety while driving.

	SIZE	LI	SS	Overall Diameter	Section Width	Standard Rim	Tread Depth	Max.Load	Max.Pressure	UTQG	
				mm	mm		mm	kg	KPa		
14	185/55R14	80	V	560	194	6J	7.4	450	300	360/A/A	
	205/70R14	98	T XL	644	209	6J	7.7	750	340	360/A/A	
	205/70R15	96	H	669	209	6J	7.7	710	300	360/A/A	
	215/70R15	98	H	683	221	6 1/2J	7.7	750	300	360/A/A	
	165/65R15	81	H	595	170	5J	7.4	462	300	360/A/A	
	175/65R15	88	H XL	609	177	5J	7.4	560	340	360/A/A	
	185/65R15	92	H XL	621	189	5 1/2J	7.4	630	340	360/A/A	
	195/65R15	91	V	635	201	6J	7.4	615	300	360/A/A	
	195/65R15	95	H XL	635	201	6J	7.4	690	340	360/A/A	
	205/65R15	94	V	647	209	6J	7.7	670	300	360/A/A	
	215/65R15	96	V	661	221	6 1/2J	7.7	710	300	360/A/A	
	15	185/60R15	88	H XL	603	189	5 1/2J	7.4	560	340	360/A/A
		195/60R15	88	H	615	201	6J	7.4	560	300	360/A/A
		205/60R15	95	V XL	627	209	6J	7.7	690	340	360/A/A
215/60R15		98	V XL	639	221	6 1/2J	7.7	750	340	360/A/A	
225/60R15		96	V	651	228	6 1/2J	7.7	710	300	360/A/A	
175/55R15		77	H	573	182	5 1/2J	7.6	412	300	360/A/A	
185/55R15		82	V	585	194	6J	7.4	475	300	360/A/A	
195/55R15		85	V	595	201	6J	7.4	515	300	360/A/A	
195/50R15		82	V	577	201	6J	7.4	475	300	360/A/A	
205/50R15		89	V XL	587	214	6 1/2J	7.7	580	340	360/A/A	
195/45R15		78	W	557	195	6 1/2J	7.4	425	300	360/A/A	
16		205/65R16	95	H	672	209	6J	7.7	690	300	360/A/A
	215/65R16	98	H	686	221	6 1/2J	7.7	750	300	360/A/A	
	195/60R16	89	V	640	201	6J	7.4	580	300	360/A/A	
	205/60R16	96	V XL	652	209	6J	7.7	710	340	360/A/A	
	215/60R16	95	V	664	221	6 1/2J	7.7	690	300	360/A/A	
	225/60R16	102	V XL	676	228	6 1/2J	7.7	850	340	360/A/A	
	235/60R16	100	V	688	240	7J	8	800	300	360/A/A	
	185/55R16	83	V	610	194	6J	7.4	487	300	360/A/A	
	195/55R16	91	V XL	620	201	6J	7.4	615	340	360/A/A	
	205/55R16	91	V	632	214	6 1/2J	7.7	615	300	360/A/A	
	195/50R16	88	V XL	602	201	6J	7.4	560	340	360/A/A	
	195/45R16	84	W XL	582	195	6 1/2J	7.4	500	340	360/A/A	
205/45R16XL	87	W XL	590	206	7J	8	545	340	360/A/A		

● XL Extra Load LI Load Index SS Speed Symbol

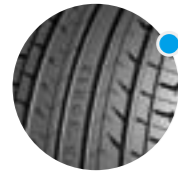
# EXTREME33

A special pattern design created to reduce noise, improve softness and cushioning to damage.



### Braking ●

Four main grooves ensure greater safety by providing excellent brake response time, firm grip, and effective water drainage.



### Environmental Protection ●

The tread is composed of a silica compound to help reduce emissions.



### ● Adhesive

Enhanced adhesive force designed for better grip on dry and wet roads.

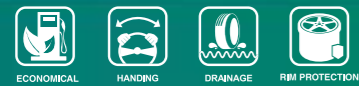


	Size	LI	SS		Overall Diameter	Section Width	Standard Rim	Tread Depth	Max Load	Pressure	SW
					mm	mm		mm	kg	KPa	
12	155/70R12	73	T		523	157	4.50B	7	365	300	RWL
	165/70R12	77	T		537	170	5.00B	7	412	300	RWL
13	215/50R13	84	H		545	226	7.00B	7	495	300	RWL
	195/40R16	80	V	XL	562	200	7J	7	450	340	BSW
16	205/35R16	79	V	XL	550	212	7 1/2J	7	437	340	BSW
	205/40ZR16	83	W	XL	570	212	7.5J	7	487	340	BSW
	215/40ZR16	86	W	XL	578	218	7 1/2J	7	530	340	BSW
	225/35ZR16	85	Y	XL	564	230	8J	7	515	340	BSW
17	195/40ZR17	81	W	XL	588	200	7J	7	462	340	BSW
	205/35ZR17	80	W	XL	575	212	7 1/2J	7	450	340	BSW

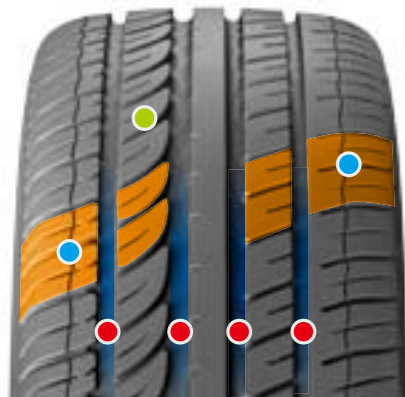
● XL Extra Load LI Load Index SS Speed Symbol

# YU61

While offering excellent handling, the silicon material within the tread also provides low rolling resistance and outstanding environmental protection.



**UTQG--280/AA/A**



**Grip**

Simple yet effective pattern design improves grip and drainage capabilities which lower the risk of hydroplaning.

**Dry and Wet Road Performance**

Optimized tread formula ensures high traction and low rolling resistance on dry roads; hydroplaning resistance is improved.

**Pitch Order**

Pre-simulated pitch order increases driving comfort and efficiently lowers noise.

**Excellent Handling**

Impressive asymmetric pattern and reinforced center rib provide good handling and braking performance; outstanding cornering ability ensures greater driving comfort. Inner pattern contributes to excellent water expulsion while the outer pattern helps to provide a wider rubber-to-road contact area which improves maneuverability.



	SIZE	LI	SS	Overall Diameter	Section Width	Standard Rim	Tread Depth	Max. Load	Max. Pressure	
				mm	mm		mm			kg
16	205/55ZR16	91	W		632	214	6 ½J	8.2	615	300
	205/55ZR16	94	W	XL	632	214	6 ½J	8.2	670	340
	215/55ZR16	93	W		642	226	7J	8.2	650	300
	215/55ZR16	97	W	XL	642	226	7J	8.2	730	340
	225/55ZR16	95	W		654	233	7J	8.2	690	300
	225/55ZR16	99	W	XL	654	233	7J	8.2	775	340
	205/50ZR16	87	W		612	214	6 ½J	8.2	545	300
	205/45ZR16	83	W		590	206	7J	8	487	300
	205/45ZR16	87	W	XL	590	206	7J	8	545	340
	225/55ZR17	97	W		680	233	7J	8.2	730	300
17	205/50ZR17	93	W	XL	638	214	6 ½J	8.2	650	340
	215/50ZR17	95	W	XL	648	226	7J	8.2	690	340
	225/50ZR17	98	W/Y	XL	658	233	7J	8.2	750	340
	205/45ZR17	88	W	XL	616	206	7J	8	560	340
	215/45ZR17	91	W	XL	626	213	7J	8.2	615	340
	225/45ZR17	94	W	XL	634	225	7 ½J	8.2	670	340
	235/45ZR17	94	W		644	236	8J	8.2	670	300
	235/45ZR17	97	W	XL	644	236	8J	8.2	730	340
	245/45ZR17	95	W		652	243	8J	8.2	690	300
	245/45ZR17	99	W	XL	652	243	8J	8.2	775	340
18	205/40ZR17	84	W	XL	596	212	7 ½J	8.2	500	340
	215/40ZR17	87	W	XL	604	218	7 ½J	8	545	340
	235/50ZR18	101	W	XL	693	245	7 ½J	8.2	825	340
	225/45ZR18	91	W		659	225	7 ½J	8.2	615	300
	225/45ZR18	95	W	XL	659	225	7 ½J	8.2	690	340
	245/45ZR18	100	W/Y	XL	677	243	8J	8	800	340
	225/40ZR18	92	W	XL	637	230	8J	8.2	630	340
	235/40ZR18	95	W	XL	645	241	8 ½J	8.2	690	340
	245/40ZR18	97	Y	XL	653	248	8 ½J	8	730	340
	215/35ZR18	84	W	XL	607	218	7 ½J	8	500	340
19	255/50ZR19	107	Y	XL	739	265	8J	8	975	340
	235/45ZR19	99	W	XL	695	236	8J	8	775	340
	235/35ZR19	91	Y	XL	647	241	8 ½J	8.2	615	340
	245/35ZR19	93	Y	XL	655	248	8 ½J	8.2	650	340

● XL Extra Load    LI Load Index    SS Speed Symbol

# YU62

A tire with outstanding handling on dry and wet surfaces, and excellent driving and braking performance to offer a pleasurable driving experience.


**UTQG--320/A/A**


### ● Handling

V-shaped tread design lowers rolling resistance and offers outstanding environmental protection.

### ● Safety

Special rim design protects rim from impact damage.

### ● Comfort

Small grooves and sipes added on the tread reduce noise and contribute to a comfortable drive.



### ● Performance

Excellent driving, braking, and handling on dry and wet surfaces. Takes advantage of the built in sports properties to offer a pleasurable ride.



	SIZE	LI	SS		Overall Diameter	Section Width	Standard Rim	Tread Depth	Max.Load	Max.Pressure
					mm	mm		mm	kg	KPa
17	235/45R17	97	W	XL	644	236	8J	8	730	340
	245/45R18	100	W	XL	677	243	8J	8	800	340
	235/40R18	95	W	XL	645	241	8 ½J	8	690	340
18	245/40R18	97	W	XL	653	248	8 ½J	8	730	340
	275/40R18	103	W	XL	677	278	9 ½J	8	775	340
	265/35R18	97	Y	XL	643	271	9 ½J	8	650	340
20	265/50R20	111	V	XL	774	277	8 ½J	8	1090	340
	275/45R20	110	Y	XL	756	273	9J	8	1060	340
	275/40R20	106	Y	XL	728	278	9 ½J	8	950	340
22	265/40R22	106	V	XL	771	271	9 ½J	8	950	340
24	305/35R24	112	W	XL	824	313	11J	8	1120	340
26	315/40R26	120	Y	XL	912	320	11J	8	1400	340
28	295/25R28	110	Y	XL	859	301	10 ½J	8	1060	340

● XL Extra Load    LI Load Index    SS Speed Symbol

# YU63

Innovative high performance tire that combines comfort with low fuel consumption.



### Fuel Saving

Silica compound helps to lower the rolling resistance and fuel consumption.

### Silence

One-up block sequence with changing pitches and sipes provides great comfort and less noise.

### Handling

Asymmetric pattern with enhanced center rib provides perfect grip and handling and enhanced precision steering and braking. Four wide circumferential main grooves inlaid with horizontal grooves enhance water expulsion and handling in wet conditions.



	Size	LI	SS		Overall Diameter	Section Width	Standard Rim	Tread Depth	Max Load	Pressure	UTQG
					mm	mm		mm	kg	KPa	
15	185/45ZR15	75	Y		547	183	6J	7.5	387	300	280/AA/A
	205/50ZR16	87	W		612	214	6 1/2J	8	545	300	280/AA/A
	205/55ZR16	94	W	XL	632	214	6 1/2J	8.2	670	340	280/AA/A
16	215/45ZR16	90	Y	XL	600	213	7J	7.5	600	340	280/AA/A
	215/55ZR16	97	W	XL	642	226	7J	8.2	730	340	280/AA/A
	225/55ZR16	99	W	XL	654	233	7J	8.2	775	340	280/AA/A
	185/45ZR17	82	Y	XL	598	183	6J	7.5	475	340	280/AA/A
17	195/40ZR17	81	Y	XL	588	200	7J	7.5	462	340	280/AA/A
	195/45ZR17	85	Y	XL	608	195	6 1/2J	7.5	515	340	280/AA/A
	205/40ZR17	84	W	XL	596	212	7 1/2J	8	500	340	280/AA/A
	205/45ZR17	88	W	XL	616	206	7J	8	560	340	280/AA/A
	205/50ZR17	93	W	XL	638	214	6 1/2J	8	650	340	280/AA/A
	205/55ZR17	95	Y	XL	658	214	6 1/2J	7.5	690	340	280/AA/A
	215/40ZR17	87	Y	XL	604	218	7 1/2J	7.5	545	340	280/AA/A
	215/45ZR17	91	W	XL	626	213	7J	8	615	340	280/AA/A
	215/50ZR17	95	W	XL	648	226	7J	8	690	340	280/AA/A
	215/55ZR17	94	W		668	226	7J	8	670	300	280/AA/A
	225/45ZR17	94	W	XL	634	225	7 1/2J	8	670	340	280/AA/A
	225/50ZR17	98	W	XL	658	233	7J	8.2	750	340	280/AA/A
225/55ZR17	101	W	XL	680	233	7J	8.2	825	340	280/AA/A	
235/45ZR17	97	W	XL	644	236	8J	8.2	730	340	280/AA/A	
235/50ZR17	100	W	XL	668	245	7 1/2J	7.5	800	340	280/AA/A	
235/50ZR17	100	Y	XL	668	245	7 1/2J	7.5	800	340	280/AA/A	
245/40ZR17	95	W	XL	628	248	8 1/2J	8	690	340	280/AA/A	
245/45ZR17	99	Y	XL	652	243	8J	7.5	775	340	280/AA/A	

● XL Extra Load    LI Load Index    SS Speed Symbol

# YU63

Innovative high performance tire that combines comfort with low fuel consumption.



	Size	LI	SS		Overall Diameter	Section Width	Standard Rim	Tread Depth	Max Load	Pressure	UTQG
					mm	mm		mm	kg	KPa	
18	215/35ZR18	84	Y	XL	607	218	7 1/2J	7.5	500	340	280/AA/A
	215/40ZR18	89	Y	XL	629	218	7 1/2J	7.5	580	340	280/AA/A
	215/45ZR18	93	Y	XL	651	213	7J	7.5	650	340	280/AA/A
	225/35ZR18	87	Y	XL	615	230	8J	7.5	545	340	280/AA/A
	225/40ZR18	92	W	XL	637	230	8J	8	630	340	280/AA/A
	225/45ZR18	95	W	XL	659	225	7 1/2J	8	690	340	280/AA/A
	235/35ZR18	90	Y	XL	621	241	8 1/2J	7.5	600	340	280/AA/A
	235/40ZR18	95	W	XL	645	241	8 1/2J	8	690	340	280/AA/A
	235/45ZR18	98	Y	XL	669	236	8J	7.5	750	340	280/AA/A
	245/35ZR18	92	Y	XL	629	248	8 1/2J	7.5	630	340	280/AA/A
	245/40ZR18	97	Y	XL	653	248	8 1/2J	8	730	340	280/AA/A
	245/45ZR18	100	Y	XL	677	243	8J	8	800	340	280/AA/A
	255/35ZR18	94	Y	XL	635	260	9J	8	670	340	280/AA/A
	255/40ZR18	99	Y	XL	661	260	9J	7.5	775	340	280/AA/A
	255/45ZR18	103	Y	XL	687	255	8 1/2J	7.5	875	340	280/AA/A
	265/35ZR18	97	Y	XL	643	271	9 1/2J	7.5	730	340	280/AA/A
275/40ZR18	103	Y	XL	677	278	9 1/2J	7.5	875	340	280/AA/A	
19	215/35ZR19	85	Y	XL	633	218	7 1/2J	7.5	515	340	280/AA/A
	225/35ZR19	88	Y	XL	641	230	8J	7.5	560	340	280/AA/A
	225/40ZR19	93	Y	XL	663	230	8J	7.5	650	340	280/AA/A
	235/35ZR19	91	Y	XL	647	241	8 1/2J	8	615	340	280/AA/A
	235/40ZR19	96	Y	XL	671	241	8 1/2J	7.5	710	340	280/AA/A
	235/45ZR19	99	Y	XL	695	236	8J	7.5	775	340	280/AA/A
	245/35ZR19	93	Y	XL	655	248	8 1/2J	8	650	340	280/AA/A

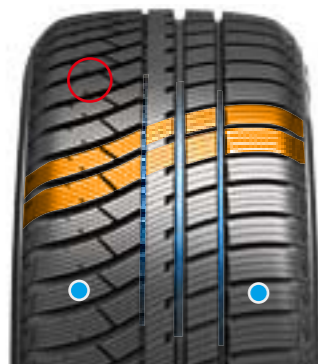
	Size	LI	SS		Overall Diameter	Section Width	Standard Rim	Tread Depth	Max Load	Pressure	UTQG
					mm	mm		mm	kg	KPa	
19	245/40ZR19	98	Y	XL	679	248	8 1/2J	8	750	340	280/AA/A
	245/45ZR19	102	Y	XL	703	243	8J	7.5	850	340	280/AA/A
	255/30ZR19	91	Y	XL	637	260	9J	7.5	615	340	280/AA/A
	255/35ZR19	96	Y	XL	661	260	9J	8	710	340	280/AA/A
	255/50ZR19	107	Y	XL	739	265	8J	8	975	340	280/AA/A
	265/30ZR19	93	Y	XL	643	271	9 1/2J	8	650	340	280/AA/A
	265/35ZR19	98	Y	XL	669	271	9 1/2J	7.5	750	340	280/AA/A
	275/30ZR19	96	Y	XL	649	278	9 1/2J	8	710	340	280/AA/A
	275/35ZR19	100	Y	XL	675	278	9 1/2J	8	800	340	280/AA/A
	275/40ZR19	105	Y	XL	703	278	9 1/2J	7.5	925	340	280/AA/A
	275/45ZR19	108	Y	XL	731	273	9J	7.5	1000	340	280/AA/A
20	285/45ZR19	111	Y	XL	739	285	9 1/2J	8	1090	340	280/AA/A
	225/30ZR20	85	Y	XL	644	230	8J	7.5	515	340	280/AA/A
	245/35ZR20	95	Y	XL	680	248	8 1/2J	7.5	690	340	280/AA/A
	245/40ZR20	99	Y	XL	704	248	8 1/2J	7.5	775	340	280/AA/A
	255/35ZR20	97	Y	XL	686	260	9J	7.5	730	340	280/AA/A
	255/40ZR20	101	Y	XL	712	260	9J	7.5	825	340	280/AA/A
	265/50ZR20	111	Y	XL	774	277	8 1/2J	7.5	1090	340	280/AA/A
	275/35ZR20	102	Y	XL	700	278	9 1/2J	7.5	850	340	280/AA/A
	275/40ZR20	106	Y	XL	728	278	9 1/2J	8	950	340	280/AA/A
	295/35ZR20	105	Y	XL	714	301	10 1/2J	7.5	925	340	280/AA/A
21	315/35ZR20	110	Y	XL	728	320	11J	8	1060	340	280/AA/A
	285/35ZR21	105	Y	XL	733	290	10J	8	925	340	280/AA/A
	295/35ZR21	107	Y	XL	739	301	10 1/2J	8	975	340	280/AA/A
	325/30ZR21	108	Y	XL	729	331	11 1/2J	8	1000	340	280/AA/A
	22	265/40ZR22	106	Y	XL	771	271	9 1/2J	7.5	950	340

● XL Extra Load LI Load Index SS Speed Symbol

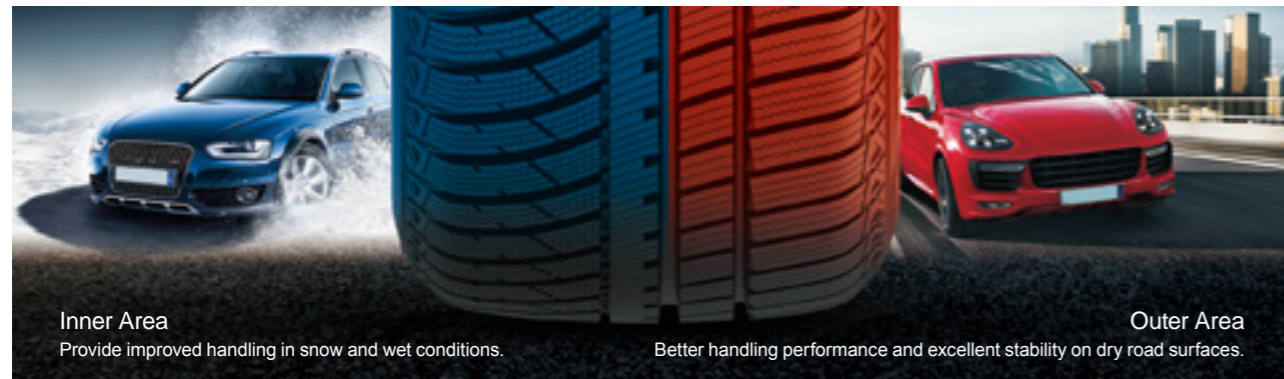


# MULTISEASON

Specialty All Season product for Europe.



- **Grip**  
The sipes employ a completely new design which substantially enhances the tread block grip force. Also offers greater braking performance.
- **Comfortable**  
A newly optimized profile design that allows for a comfortable ride all year round.
- **Handling and Stability**  
Uses an all new asymmetric tread design with three circumferential main grooves which greatly improve tire handling performance and stability.



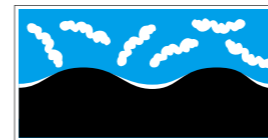
**Inner Area**  
Provide improved handling in snow and wet conditions.

**Outer Area**  
Better handling performance and excellent stability on dry road surfaces.

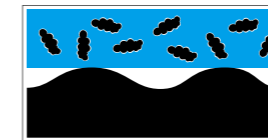
- Usable in snowy and wet conditions with excellent handling capabilities.
- State of the art computer simulation used to optimize tread design resulting in decreased road noise.
- First rate handling capabilities and stability.
- Employs new tread compound design to accommodate all season climate, which allows you to enjoy a year-round carefree driving experience.

**1** Extensive Use Of A Highly Dispersed Silica To Reduce Rolling Resistance And Improve Anti-Skid Capabilities.

**White Carbon Black Filler**

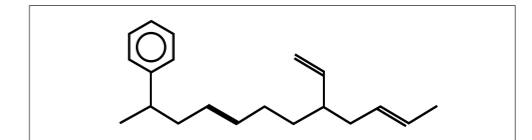


**Carbon Black Filler**



White carbon black sticks better to the body of the tire which creates less friction. This greatly reduces the tire's rolling resistance. White carbon black is more flexible making it better at absorbing shocks from road deformations and improves grip.

**2** Uses a solution of polymerized styrene-butadiene (BTD) rubber compound to improve hydroplaning resistance, and other types of rubber which prepares the tire for all weather use.



	SIZE	LI	SS	Overall Diameter	Section Width	Standard Rim	Tread Depth	Max.Load	Max.Pressure
				mm	mm		mm	kg	KPa
13	155/70R13	75	T	548	157	4.50B	8	387	300
	155/65R14	75	T	558	157	4 1/2J	8	387	300
	165/65R14	79	T	570	170	5J	8	437	300
14	165/70R14	85	T XL	588	170	5J	8	515	340
	175/65R14	82	T	584	177	5J	8.5	475	300
	185/60R14	82	T	578	189	5 1/2J	8.5	475	300
	185/65R14	86	T	596	189	5 1/2J	8.5	530	300
15	185/60R15	88	H XL	603	189	5 1/2J	8.5	560	340
	185/65R15	88	H	621	189	5 1/2J	8.5	560	300
	195/50R15	82	H	577	201	6J	8.5	475	300
	195/55R15	85	H	595	201	6J	8.5	515	300
	195/60R15	88	H	615	201	6J	8.5	560	300
16	195/65R15	91	H	635	201	6J	8.5	615	300
	205/55R16	94	H/V XL	632	214	6 1/2J	8.5	670	340
17	225/45R17	94	V XL	634	225	7 1/2J	8.5	670	340

● XL Extra Load

# YS71

Optimized high performance, urban off-road pattern suitable for SUVs with excellent endurance and low noise on various types of roads.



### Excellent Performance

Wide grooves provide excellent water drainage, grip, and driving performance on wet pavements.

### Silence

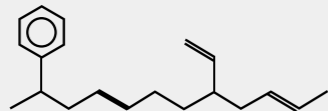
Precise design of block distances, angles, and dense small grooves helps to efficiently reduce noise.

### Cross-Country

Optimal combination of wide circumferential grooves and specially designed blocks. Pressure balance structure helps to maintain good performance on paved and unpaved roads. Provides excellent sport properties and driving comfort in the field.

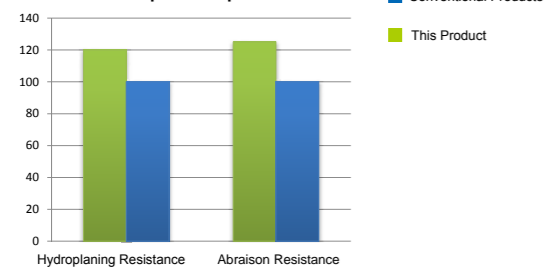


Employs a polymerized styrene-butadiene rubber compound solution to improve hydroplaning resistance.



High content of Styrene Vinyl, good hydroplaning resistance. Molecular length uniformity and great heat dissipation.

Tread Compound Improvement



### Handling

Ladder-like structure at the bottom of the grooves connects the blocks on both sides, upgrades lateral strength, improves maneuverability and efficiently prevents the lodging of stones. Wide center rib provides excellent steering performance.

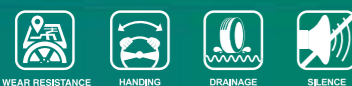


	Size	LI	SS	Overall Diameter	Section Width	Standard Rim	Tread Depth	Max Load	Pressure	UTQG	SW
				mm	mm		mm	kg	KPa		
14	205/75R14	95	S	664	203	5 1/2J	9.5	690	300	480/A/B	WR
	215/75R14	100	S	678	216	6J	9.5	800	300	480/A/B	WR
15	205/70R15	96	T	669	209	6J	9	710	300	480/A/B	WR
	205/75R15	97	T	689	203	5 1/2J	9.5	730	300	480/A/B	WR
	215/70R15	98	T	683	221	6 1/2J	9	750	300	480/A/B	WR
	215/75R15	100	S/T	703	216	6J	9.2	800	300	480/A/B	BSW
	215/75R15	100	T	804	267	7 1/2J	9.2	800	300	480/A/B	WR
	225/70R15	100	T	697	228	6 1/2J	9	800	300	480/A/B	BSW
16	225/70R15	100	T	697	228	6 1/2J	9	800	300	480/A/B	WR
	225/75R15	102	T	719	223	6J	9.2	850	300	480/A/B	BSW
	225/75R15	102	T	719	223	6J	9.2	850	300	480/A/B	WR
	235/75R15	105	S/T	733	235	6 1/2J	9.5	925	300	480/A/B	BSW
	235/75R15	105	S	733	235	6 1/2J	9.5	925	300	480/A/B	WR
	235/75R15	105	T	733	235	6 1/2J	9.5	925	300	480/A/B	WR
17	215/65R16	98	T	686	221	6 1/2J	9	750	300	480/A/B	BSW
	215/70R16	100	T	708	221	6 1/2J	9	800	300	480/A/B	BSW
	225/70R16	103	T	722	228	6 1/2J	9	875	300	480/A/B	BSW
	235/70R16	106	T	736	240	7J	9	950	300	480/A/B	BSW
	245/70R16	111	T	750	248	7J	9	1090	340	480/A/B	BSW
	255/70R16	111	T	764	260	7 1/2J	9	1090	300	480/A/B	BSW
18	265/70R16	112	S	778	272	8J	9	1120	300	480/A/B	BSW
	215/60R17	96	H	690	221	6 1/2J	9	710	300	480/A/A	BSW
	225/65R17	102	S	724	228	6 1/2J	9.2	850	300	480/A/B	BSW
	235/65R17	104	S	738	240	7J	9	900	300	480/A/B	BSW
	245/65R17	107	S	750	248	7J	9	975	300	480/A/B	BSW
	265/65R17	112	S	776	272	8J	9	1120	300	480/A/B	BSW
265/70R17	115	T	804	272	8J	9	1215	300	480/A/B	BSW	
18	235/60R18	107	H	739	240	7J	9	975	340	480/A/A	BSW

● XL Extra Load LI Load Index SS Speed Symbol

# YS72

Ultra high performance SUV tire with excellent endurance and maneuverability.



## Handling Performance

Four wide circumferential grooves and extra grooves in the blocks contribute to efficient drainage, provide great traction on wet roads and enhance safety. Center rib provides excellent steering performance.

## Excellent Traction

Provides strong performance due to the complex tread material makeup which enhances wear resistance and maneuverability.

## Silence

Varied pitch design reduces noise and makes driving more fluid and comfortable.



## Cross-Country

Impressive asymmetric pattern and reinforced center rib provide good braking performance and ensure excellent handling on wet and dry roads.

	Size	LI	SS	Overall Diameter	Section Width	Standard Rim	Tread Depth	Max Load	Pressure	UTQG
				mm	mm		mm	kg	KPa	
15	255/70R15	108	T	739	260	7 1/2J	9	1000	300	420/A/B
	265/70R15	112	T	753	272	8J	9	1120	300	420/A/B
16	275/70R16	114	H	792	279	8J	8.8	1180	300	420/A/B
	225/60R17	99	H	702	228	6 1/2J	9	775	300	420/A/A
	235/60R17	102	H	714	240	7J	9	850	300	420/A/A
17	235/65R17	104	H	738	240	7J	9	900	300	420/A/B
	245/70R17	110	T	776	248	7J	9	1060	300	420/A/B
	255/60R17	106	H	738	260	7 1/2J	8.8	950	300	420/A/B
	275/65R17	115	H	790	279	8J	9	1215	300	420/A/B
	285/65R17	116	H	802	292	8 1/2J	9	1250	300	420/A/B
	285/65R17	116	T	802	292	8 1/2J	9	1250	300	420/A/B
18	225/60R18	100	H	727	228	6 1/2J	8.8	800	300	420/A/A
	235/55R18	104	V	715	245	7 1/2J	8	900	340	420/A/A
	235/60R18	107	V	739	240	7J	9	975	340	420/A/A
	245/60R18	105	H	751	248	7J	9	925	300	420/A/B
	255/55R18	105	V	737	265	8J	8.6	925	300	420/A/A
19	265/60R18	110	H	775	272	8J	9	1060	300	420/A/B
	265/70R18	116	T	829	272	8J	9	1250	300	420/A/B
	235/55R19	101	V	741	245	7 1/2J	8	825	300	420/A/A
	255/50R19	103	V	739	265	8J	8.6	875	300	420/A/A
20	225/35R20	90	W	666	230	8J	8.6	600	340	420/A/A
	225/35R20	93	W	666	230	8J	8.6	600	340	420/A/A
	245/45R20	103	W	728	243	8J	8.6	875	340	480/A/A
	275/55R20	113	H	810	284	8 1/2J	8	1150	300	420/A/A
	275/60R20	115	S	838	279	8J	8.8	1215	300	420/A/B

● XL Extra Load LI Load Index SS Speed Symbol

# YS78

Radial tire for pickups, vans and SUVs. Offers great traction on wet and muddy terrain, excellent handling efficiency and outstanding driving comfort. Synchronized comfort on urban off-road and poorly-paved terrain.

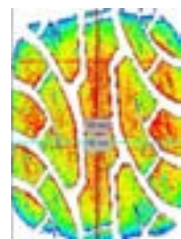


### ● Drainage

Widening lateral grooves improve drainage when running on wet surfaces.

### ● Handling Performance

Reinforced central rib enhances maneuverability and high-speed driving performance.



### Contour Design

Through computer simulation analysis of the contact shape, a new tire profile was created. The new design strengthens the carcass material to ensure superior carrying capacity of the tire; at the same time enables uniform contact pressure distribution and uniform tread wear. Helps reduce noise.

### ● Specially Designed Tread

Unique all-terrain wide tread is suitable for all kinds of road conditions and provides a safer ride; large blocks and open-ended wide grooves ensure superior driving force on muddy roads.



	Size	PR	LI	SS	Overall Diameter	Section Width	Standard Rim	Tread Depth	Max Load	Pressure	SW
					mm	mm		mm			
15	31X10.50R15LT	6	109	R	775	268	8 1/2J	13	1030	350	BSW/OWL
	LT215/75R15	6	100/97	R	703	216	6J	12	800/730	350	BSW/OWL
	LT235/75R15	6	104/101	R	733	235	6 1/2J	13	900/825	350	BSW/OWL
	LT235/75R15	8	110/107	R	733	235	6 1/2J	13	2335/2150	450	BSW/OWL
16	LT215/85R16	10	115/112	R	772	216	6J	12.5	1215/1120	550	BSW/OWL
	LT225/70R16	6	102/99	R	722	228	6 1/2J	12.5	850/775	350	OWL
	LT225/75R16	10	115/112	R	744	223	6J	13	1215/1120	550	BSW/OWL
	LT235/85R16	10	120/116	R	806	235	6 1/2J	13	1400/1250	550	BSW/OWL
	LT245/75R16	10	120/116	R	774	248	7J	13	1400/1250	550	BSW/OWL
	LT245/75R16	10	120/116	S	774	248	7J	13	1400/1250	550	BSW/OWL
	LT265/70R16	6	110/107	R	778	272	8J	13	1060/975	350	BSW/OWL
	LT265/70R16	8	117/114	R	788	288	8J	13	1285/1180	450	BSW/OWL
18	LT265/75R16	10	123/120	R	804	267	7 1/2J	13	1550/1400	550	BSW/OWL
	LT275/70R18	10	125/122	R	843	279	8J	12.5	1650/1500	550	BSW

● XL Extra Load LI Load Index SS Speed Symbol  
SBL: Serrated Black Letter OWL: Outlined White Letter

# YS79

Original all-terrain pattern design with excellent grip and outstanding handling performance improves the comfortability on paved road and abrasion performance on unpaved road.



### Special Tread

The unique tread compound improves traction and enhances wear resistance and handling, thus resulting in better adaption to all-terrain use.



### Tread Pattern

Three-dimensional tread design includes various combinations of blocks and V-shaped stepped grooves which support tread rigidity, reduce noise, and maintain a longer life by lowering uneven wear.

### Stability and Hydroplaning Resistance

Wide, straight lateral grooves along with fine dense sipes ensure outstanding water dispersion and enhance high-speed stability and hydroplaning resistance.

### Shoulder Design

Widened zigzag shoulder grooves enhance water dispersion and off-road performance; three-dimensional shoulder design enhances protection.



	Size	LI	SS	XL	Overall Diameter	Section Width	Standard Rim	Tread Depth	Max Load	Pressure	UTQG	SW
					mm	mm		mm	kg	KPa		
15	235/75R15	109	S	XL	733	235	6 1/2J	9	1030	340	700/A/B	RWL
	245/70R16	111	S	XL	750	248	7J	9	1090	340	700/A/B	RWL
16	255/70R16	111	S		764	260	7 1/2J	9	1090	300	700/A/B	RWL
	265/70R16	112	S		778	272	8J	9	1120	300	700/A/B	RWL
	225/65R17	102	T		724	228	6 1/2J	9	850	300	700/A/B	RWL
17	235/65R17	104	T		738	240	7J	9	900	300	700/A/B	RWL
	265/65R17	112	T		776	272	8J	9	1120	300	700/A/B	RWL

	Size	PR	LI	SS	Overall Diameter	Section Width	Standard Rim	Tread Depth	Max Load	Pressure	SW
					mm	mm		mm	kg	KPa	
15	255/70R15C	8	112/110	S	739	260	7 1/2J	11	730/690	450	RWL
	255/75R15C	8	118/116	S	763	255	7J	11	775/750	450	RWL
	31X10.50R15LT	6	109	R	775	268	8 1/2J	11	1030	350	RWL
	LT235/75R15	6	104/101	R	733	235	6 1/2J	11	900/825	350	RWL
16	LT235/85R16	10	120/116	R	806	235	6 1/2J	11	1380/1260	550	RWL
	LT245/75R16	10	120/116	R	774	248	7J	11	1380/1260	550	RWL

● XL Extra Load LI Load Index SS Speed Symbol RWL: Raised White Letter

# YS81

Specially designed tire developd for cross-country enthusiasts.

NEW



- TRAVERSABLE
- CROSS-COUNTRY
- HIGH DURABILITY
- PUNCTURE RESISTANT
- RESILIENT



### Shoulder Design

Open shoulder design with dilated and deepened grooves allows for easier discharge of mud when driving at low or high speeds. Effectively improves self-cleaning capabilities and offers better grip when traveling on rugged and rocky roads.

### Enhanced Performance

The large block pattern on the shoulder helps to improve driving quality by vastly enhancing performance on muddy and rocky roads.

### Safety

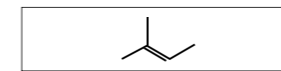
The shield pattern extended on the sidewall provides a safer drive by protecting the sidewall and increasing traction on mud roads.

Carcass is designed with three layers of polyester fabric making the tire extremely rugged and resistance to strong impacts of external foreign objects.

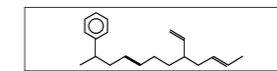
Optimized tread formula design provides ultra-strong traction performance and puncture resistance.



Uses natural rubber and styrene-butadiene rubber to create a more balanced tire with strong braking performance.



High strength capabilities (puncture and scratch resistant)

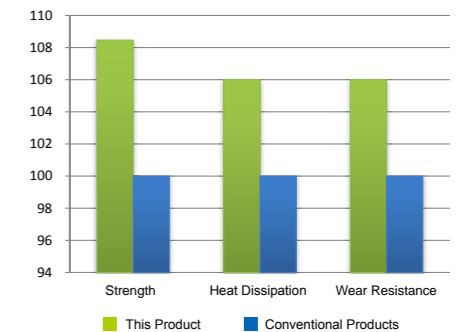


High wear resistance and braking capabilities



Staggered corners on the blocks with no dead angles improves traction and climbing capability.

Tread Compound Improvement



	Size	PR	LI	SS	Overall Diameter	Section Width	Standard Rim	Tread Depth	Max Load	Pressure	SW
					mm	mm		mm	kg	KPa	
15	30X9.50R15LT	6	104	Q	756	245	7 1/2J	15.3	900	350	OWL
	31X10.50R15LT	6	109	Q	781	265	8 1/2J	15.3	1030	350	OWL
	33X12.50R15LT	6	108	Q	832	315	10J	15.3	1000	250	OWL
	35X12.50R15LT	6	113	Q	883	315	10J	15.3	1150	250	OWL
	LT235/75R15	6	104/101	Q	739	235	6 1/2J	15.3	900/825	350	OWL
16	LT235/85R16	10	120/116	Q	812	235	6 1/2J	15.3	1380/1260	550	OWL
	LT245/75R16	10	120/116	Q	780	245	7J	15.3	1380/1260	550	OWL
	LT265/75R16	8	119/116	Q	810	265	7 1/2J	15.3	1360/1250	450	OWL
	LT265/75R16	10	123/120	Q	810	265	7 1/2J	15.3	1550/1400	550	OWL

● XL Extra Load   LI Load Index   SS Speed Symbol   OWL Outline White Letter

# YS82

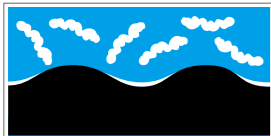
Specially designed UHP SUV tire.

**NEW**

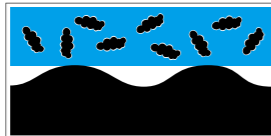


**1** Extensive use of highly dispersed white carbon black; helps to reduce tire rolling resistance and improve skid resistance.

**White Carbon Black Filler**

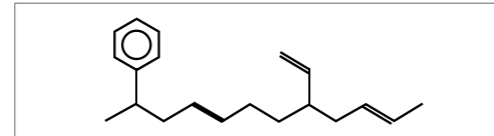


**Carbon Black Filler**



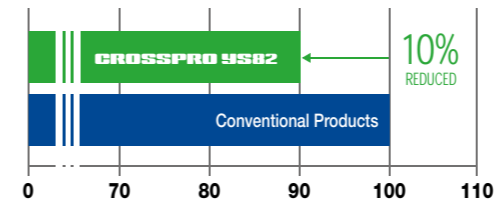
White carbon black friction is smaller relative to carbon black between aggregates; greatly reduces tire rolling resistance. White carbon black filler has greater elasticity making it easier to absorb force from deformations on the road, and increases grip.

**2** The body material solution is polymerized with styrene-butadiene (SBT).

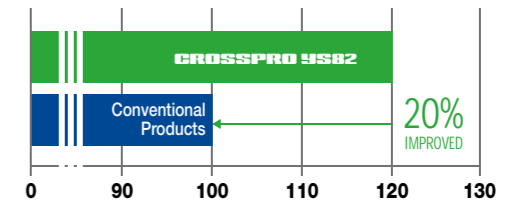


High levels of Styrene Vinyl, good hydroplaning resistance. High molecule length uniformity, low heat buildup.

**Rolling Resistance**



**Tire Hydroplaning Resistance**



Four circumferential main groove design provides effective drainage and improved handling performance in wet conditions.

**Noise Reduction**

Optimized multi-pitch tread groove design and sipes effectively reduce noise and allow for a more comfortable ride.



**Drainage**

A newly added function is the four main circumferential grooves which effectively drains water and increases maneuverability in wet conditions.

**Safety**

Center rib design provides greater security by allowing for greater traction when accelerating and improving braking performance.

**Fuel Efficient**

Silicon compound tread effectively reduces rolling resistance and reduces fuel consumption.

# YS82

Specially designed UHP SUV tire.



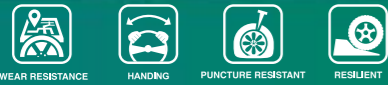
	Size	LI	SS		Overall Diameter	Section Width	Standard Rim	Tread Depth	Max Load	Pressure	UTQG
					mm	mm		mm	kg	KPa	
17	235/55R17	103	W	XL	690	245	7 1/2J	8	875	340	280/AA/A
	225/55R18	102	W	XL	705	233	7J	8	850	340	280/AA/A
	225/60R18	100	V		727	228	6 1/2J	8	800	300	280/AA/A
	235/50R18	97	V		693	245	7 1/2J	8	730	300	280/AA/A
	235/55R18	104	W	XL	715	245	7 1/2J	8	900	340	280/AA/A
	235/60R18	107	W	XL	739	240	7J	8	975	340	280/AA/A
18	245/60R18	105	H		751	248	7J	8	925	300	280/AA/B
	255/55R18	109	Y	XL	737	265	8J	8	1030	340	280/AA/A
	255/60R18	112	V	XL	763	260	7 1/2J	8	1120	340	280/AA/B
	265/60R18	110	V		775	272	8J	8	1060	300	280/AA/B
	265/60R18	110	H		775	272	8J	8	1060	300	280/AA/B
	275/40R18	103	W	XL	677	278	9 1/2J	8	875	340	280/AA/A
19	235/55R19	101	W		741	245	7 1/2J	8	825	300	280/AA/A
	245/55R19	103	V		753	253	7 1/2J	8	875	300	280/AA/A
	255/55R19	111	Y	XL	763	265	8J	8	1090	340	280/AA/A
	265/50R19	110	Y	XL	749	277	8 1/2J	8	1060	340	280/AA/A

	Size	LI	SS		Overall Diameter	Section Width	Standard Rim	Tread Depth	Max Load	Pressure	UTQG
					mm	mm		mm	kg	KPa	
20	255/40R20	101	Y	XL	712	260	9J	8	825	340	280/AA/A
	255/55R20	110	Y	XL	788	265	8J	8	1060	340	280/AA/A
	265/50R20	111	Y	XL	774	277	8 1/2J	8	1090	340	280/AA/A
	275/35R20	102	W	XL	700	278	9 1/2J	8	850	340	280/AA/A
	275/55R20	117	W	XL	810	284	8 1/2J	8	1285	340	280/AA/A
	275/60R20	115	V		838	279	8J	8	1215	300	280/AA/B
	275/60R20	119	V	XL	838	279	8J	8	1360	340	280/AA/B
	285/40R20	104	Y		736	290	10J	8	900	300	280/AA/A
	285/50R20	116	W	XL	794	297	9J	8	1250	340	280/AA/A
	295/35R20	105	Y	XL	714	301	10 1/2J	8	925	340	280/AA/A
22	285/45R22	114	W	XL	815	285	9 1/2J	8	1180	340	280/AA/A
	305/40R22	114	W	XL	803	313	11J	8	1180	340	280/AA/A
	305/45R22	118	W	XL	833	303	10J	8	1320	340	280/AA/A



# YS22

**NEW**



● **Traction**

Three lateral zigzag grooves improve drainage and prevents skidding to ensure traction performance on both dry and wet roads.

**Load Capability**

Strengthened carcass and tread design ensure the tire has an increased load capacity.

**Tire Life**

Enhanced wear-resistant tread formula increases the tire life by making it extremely resistant to abrasion damage.



● **Stability**

Designed with a wider running surface and anti-abrasion shoulders, this tire gives a better contact area to guarantee continuous driving stability and enhanced abrasion resistance.

	SIZE	PR	LI	SS	Overall Diameter	Section Width	Standard Rim	Tread Depth	Max. Load (kg)		Pressure
					mm	mm		mm	S(kg)	D(kg)	KPa
17	7.50R16LT	8	114/112	R	805	215	6.00G	10.5	1120	975	460

● XL Extra Load    LI Load Index    SS Speed Symbol

# YS76

Optimized wet and dry performance, highly efficient in preventing side wear, and longer mileage.

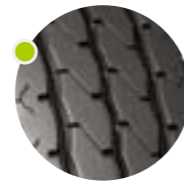


### Tread Pattern

Optimized tread pattern design guarantees even pressure and enhances wear resistance.

### Tire Structure

Strengthened tire structure and reinforced carcass ensure greater load capacity.



	SIZE	PR	LI	SS	Overall Diameter	Section Width	Standard Rim	Tread Depth	Max. Load (kg)		Pressure
					mm	mm		mm	S(kg)	D(kg)	KPa
15	6.50R15LT	10	106/101	N	730	185	5.50F	10	950	825	560
	7.00R15LT	10	109/105	N	750	200	5.50F	10	1030	925	560
16	6.50R16LT	10	107/102	N	750	185	5.50F	10.5	975	850	560
	7.00R16LT	12	115/110	N	775	200	5.50F	10.5	1215	1060	670

● XL Extra Load   LI Load Index   SS Speed Symbol

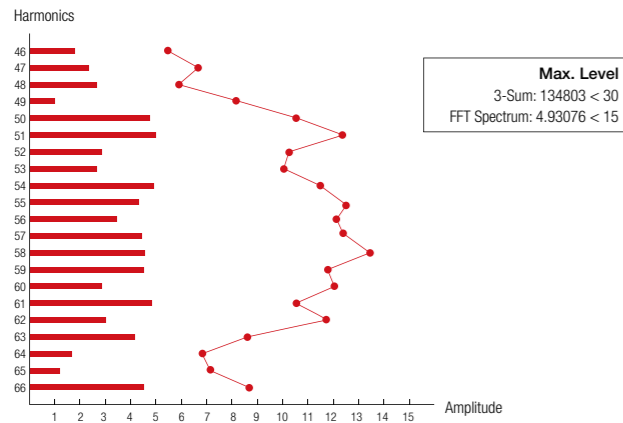
### Groove

Wide S-shaped grooves ensure efficient drainage and prevents the lodging of stones.



# YS77

Specially designed pattern for commercial light trucks, minivans and minibuses that offers outstanding handling on wet surfaces and excellent high speed durability.



**Variable Pitch Design**  
The variable pitch tread design was generated to reduce noise and create a better driving experience.



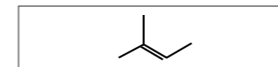
**Tread Pattern**  
Original pattern design ensures excellent performance and greater driving comfort on wet and dry roads.



- Tire Structure**  
Enhanced tire structure and reinforced carcass offers an even greater load bearing capabilities.
- Groove**  
Wider and deeper grooves increase wear resistance, drainage, and provide greater handling and stability on all kinds of roads.

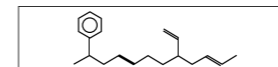


Use of natural rubber and styrene-butadiene rubber to achieve a balanced of strength and braking performance.

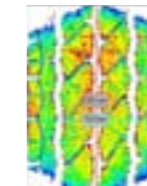


High strength (Puncture and Scratch Resistant)

+



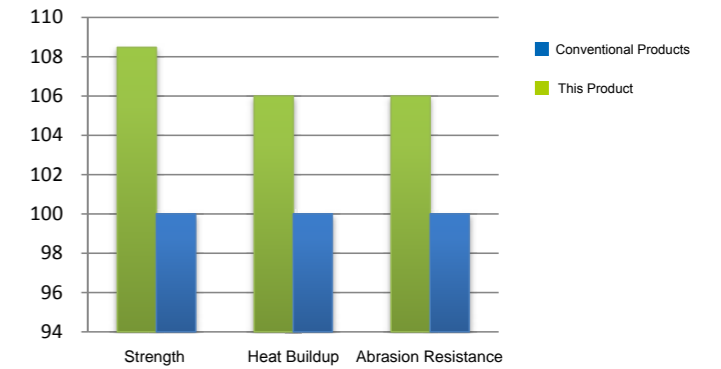
High wear resistance and high braking performance



## Contour Design

Through computer simulation analysis of the contact shape, a new tire profile was created. The new design strengthens the carcass material to ensure superior carrying capacity of the tire

## Tread Compound Improvement



Nylon cap strips wound in the belt cover the entire shoulder to help resist centrifugal force and resist the convex deformation of the shoulder therefore improving the durability of the tire.

Strengthened double carcass design improve the sidewall's impact resistance.

Sturdy bead apex structure and design support the tire load to improve braking when cornering.

# YS77

Specially designed pattern for commercial light trucks, minivans and minibuses that offers outstanding handling on wet surfaces and excellent high speed durability.



	Size	PR	LI	SS	Overall Diameter	Section Width	Standard Rim	Tread Depth	Max Load	Pressure	SW
					mm	mm		mm	kg	KPa	
12	145R12C	6	80/78	P	537	145	4.00B	8	450/425	350	BSW
	145R12C	8	86/84	P	537	145	4.00B	8	530/500	450	BSW
	155R12C	6	83/81	P	553	157	4.50B	8	487/462	350	BSW
	155R12C	8	88/86	P	553	157	4.50B	8	560/530	450	BSW
13	155R13C	6	85/83	Q	578	157	4.50B	8	515/487	350	BSW
	165/70R13C	6	88/86	Q	562	170	5.00B	8	560/530	375	BSW
	165R13C	8	94/93	S	594	165	4.50B	7.6	670/650	450	BSW
	175R13C	8	97/95	S	610	177	5.00B	8	730/690	450	BSW
14	175/65R14C	6	90/88	T	584	177	5J	8	600/560	375	BSW
	175/70R14C	6	95/93	Q	602	177	5J	8	690/650	375	BSW
	175R14C	8	99/98	Q	636	177	5J	9	775/750	450	BSW
	185R14C	8	102/100	Q	652	189	5 1/2J	9	850/800	450	BSW
	195R14C	8	106/104	Q	668	196	5 1/2J	9	950/900	450	BSW
	195R14C	8	106/104	Q	666	198	5 1/2J	9	950/900	450	WR
	205/75R14C	8	109/107	Q	664	203	5 1/2J	9	1030/975	475	WR
	205R14C	8	109/107	R	684	208	6J	9	1030/975	450	BSW
	185R15C	8	103/102	R	674	189	5 1/2J	9	875/850	450	BSW
	195/70R15C	10	104/102	R	655	201	6J	10	900/850	450	BSW
15	195R15C	8	106/104	R	693	196	5 1/2J	9	950/900	450	BSW
	195R15C	8	106/104	R	693	196	5 1/2J	9	950/900	450	WR
	205/65R15C	6	102/100	R	647	209	6J	9	850/800	375	BSW
	205/70R15C	8	106/104	R	669	209	6J	9	950/900	450	BSW
	215/70R15C	8	109/107	S	683	221	6 1/2J	10	1030/975	450	BSW
	215R15C	8	109/107	R	725	218	6J	9	1030/975	450	WR
	225/70R15C	8	112/110	R	697	228	6 1/2J	9	1120/1060	450	BSW

	Size	PR	LI	SS	Overall Diameter	Section Width	Standard Rim	Tread Depth	Max Load	Pressure	SW
					mm	mm		mm	kg	KPa	
16	175R16C	8	101/99	R	684	178	5J	9	825/775	450	BSW
	185/75R16C	8	104/102	R	684	184	5J	9	900/850	475	BSW
	195/60R16C	6	99/97	T	640	201	6J	9	775/730	375	BSW
	195/65R16C	10	104/102	R	660	201	6J	9.4	900/850	475	BSW
	195/75R16C	8	107/105	R	698	196	5 1/2J	10	975/925	475	BSW
	205/65R16C	8	107/105	R	672	209	6J	9	975/925	475	BSW
	205/75R16C	8	110/108	R	714	203	5 1/2J	9	1060/1000	475	BSW
	205R16C	8	110/108	R	736	208	6J	8	1060/1000	450	BSW
	215/60R16C	6	103/101	T	664	221	6 1/2J	9	875/825	375	BSW
	215/65R16C	8	109/107	R	686	221	6 1/2J	9	1030/975	475	BSW
	215/70R16C	6	108/106	Q	708	221	6 1/2J	9	1000/950	375	BSW
	215/75R16C	10	116/114	R	728	216	6J	9	1250/1180	525	BSW
	225/65R16C	8	112/110	R	698	228	6 1/2J	9	1120/1060	475	BSW
	225/75R16C	10	121/120	R	744	223	6J	9	1450/1400	575	BSW
	235/65R16C	8	115/113	R	712	240	7J	9	1215/1150	475	BSW
	17	235/65R16C	10	121/119	R	712	240	7J	9	1450/1360	575
285/65R16C		8	125	R	776	292	8 1/2J	9	1650	475	BSW
285/65R16C		10	128	R	776	292	8 1/2J	9	1800	525	BSW
17	225/70R17C	6	112/110	R	748	228	6 1/2J	9	1120/1060	375	BSW

● LI Load Index SS Speed Symbol WR White Ring BSW Black Sidewall

# YWS1

Special tread rubber compound and complex tiny grooves help maintain softness, strong grip and excellent manipulation of the tire in cold and snowy weather.



● **Tread Pattern**

Reinforced center rib ensures better handling and high speed performance. Multiple sipes enhance grip and braking force in snow and ice.

● **Special Tread Compound**

Special silica tread formula helps the tire remain soft in low temperatures to ensure stable driving and braking force.

● **Grooves**

Gradually widening lateral grooves and zigzagged longitudinal grooves improve self-cleaning and draining capabilities.

● **Economy**

Silica compound and low center of gravity help to reduce rolling resistance, hydrocarbon emission and fuel consumption.

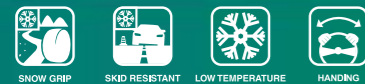


	SIZE	LI	SS	Overall Diameter	Section Width	Standard Rim	Tread Depth	Max. Load	Max. Pressure
				mm	mm		mm	kg	KPa
13	155/70R13	75	T	548	157	4.50B	8.5	387	300
	165/70R13	79	T	562	170	5.00B	8.5	437	300
	165/70R13	83	T XL	562	170	5.00B	8.5	487	340
	175/70R13	82	T	576	177	5.00B	8.5	475	300
	155/65R13	73	T	532	157	4.50B	8.5	365	300
	165/70R14	81	T	588	170	5J	8.5	462	300
14	165/70R14	85	T XL	588	170	5J	8.5	515	340
	175/70R14	84	T	602	177	5J	8.5	500	300
	175/70R14	88	T XL	602	177	5J	8.5	560	340
	185/70R14	88	H	616	189	5 ½J	8.7	560	300
	185/70R14	92	T XL	616	189	5 ½J	8.7	630	340
	195/70R14	91	H	630	201	6J	8.7	615	300
	195/70R14	95	T XL	630	201	6J	8.7	690	340
	205/70R14	98	T XL	644	209	6J	8.7	750	340
	165/65R14	79	T	570	170	5J	8.5	437	300
	175/65R14	82	H	584	177	5 J	8.7	475	300
	175/65R14	86	T XL	584	177	5 J	8.7	530	340
	185/65R14	86	T/H	596	189	5 ½J	8.7	530	300
15	185/60R14	82	T/H	578	189	5 ½J	8.5	475	300
	195/60R14	86	T	590	201	6J	8.5	530	300
	175/65R15	84	H	609	177	5J	8.7	500	300
	175/65R15	88	H XL	609	177	5J	8.7	560	340
	185/65R15	88	T/H	621	189	5 ½J	8.7	560	300
	185/65R15	92	T/H XL	621	189	5 ½J	8.7	630	340
	195/65R15	91	T/H	635	201	6J	8.7	615	300
	195/65R15	95	T XL	635	201	6J	8.7	690	340
	205/65R15	94	H	647	209	6J	8.5	670	300
	215/65R15	96	H	661	221	6 ½J	8.7	710	300
	185/60R15	84	H	603	189	5 ½J	8.5	500	300
	185/60R15	88	T/H XL	603	189	5 ½J	8.5	560	340
16	195/60R15	88	T/H	615	201	6J	8.5	560	300
	205/60R15	91	H	627	209	6J	8.7	615	300
	185/55R15	86	H XL	585	194	6J	8.5	530	340
	195/55R15	85	H	595	201	6J	8.5	515	300
	195/50R15	86	H/V XL	577	201	6J	8.5	530	340
	245/70R16	107	T	750	248	7J	8.7	975	300
	205/65R16	95	H	672	209	6J	8.7	690	300
	215/65R16	98	H	686	221	6 ½J	8.8	750	300
	205/60R16	96	H XL	652	209	6J	8.7	710	340
	215/60R16	99	H XL	664	221	6 ½J	8.8	775	340
	225/60R16	98	H	676	228	6 ½J	8.7	750	300
	195/55R16	87	H/V	620	201	6J	8.5	545	300
205/55R16	91	H	632	214	6 ½J	8.5	615	300	
205/55R16	94	H/V XL	632	214	6 ½J	8.5	670	340	
215/55R16	97	H/V XL	642	226	7J	8.7	730	340	
225/55R16	99	H XL	654	233	7J	8.7	775	340	
205/50R16	87	H	612	214	6 ½J	8.7	545	300	
195/45R16	84	H XL	582	195	6 ½J	8.5	500	340	
205/45R16	87	H/V XL	590	206	7J	8.7	545	340	

● XL Extra Load LI Load Index SS Speed Symbol

# YW52

Special silica compound provides excellent driving performance on ice and snow. Asymmetric patter and wide tread deliver outstanding safety.



● **Safety**

Upgraded silica compound ensures the tread maintains its softness in low temperatures to provide first-class safety. Lateral serrated sipe design on tread improves skid resistance.

● **Tread Design**

Deep and denesley distributed grooves help to soften the tread which enhances braking power on ice.

● **Handling**

Asymmetric pattern and three main grooves provide great maneuverability.

● **Braking**

Serrated design in the outside main groove ensures strong grip and braking force on ice and snow.



	Size	LI	SS		Overall Diameter	Section Width	Standard Rim	Tread Depth	Max Load	Pressure
					mm	mm		mm	kg	KPa
14	185/60R14	82	T		578	189	5 1/2J	9.2	475	300
	195/65R15	95	T	XL	635	201	6J	9.2	690	340
15	205/65R15	94	H		647	209	6J	9.2	670	300
	205/55R16	91	H		632	214	6 1/2J	9.5	615	300
16	215/55R16	97	H	XL	642	226	7J	9.5	730	340
	215/60R16	99	H	XL	664	221	6 1/2J	9.5	775	340
	215/65R16	98	H		686	221	6 1/2J	9.5	750	300
	225/55R16	99	H	XL	654	233	7J	9.5	775	340
	225/60R16	98	H		676	228	6 1/2J	9.5	750	300
	205/45R17	88	H	XL	616	206	7J	9.5	560	340
	205/50R17	89	H		638	214	6 1/2J	9.5	580	300
	205/55R17	95	H	XL	658	214	6 1/2J	9.5	690	340
17	215/45R17	87	H		626	213	7J	9.5	545	300
	215/55R17	94	H		668	226	7J	9.5	670	300
	225/45R17	91	H		634	225	7 1/2J	9.5	615	300
	225/50R17	98	H	XL	658	233	7J	9.5	750	340
	225/55R17	97	H		680	233	7J	9.5	730	300
	225/65R17	102	S		724	228	6 1/2J	9.5	850	300
	235/45R17	94	H		644	236	8J	9.5	670	300
	235/55R17	99	H		690	245	7 1/2J	9.5	775	300
	235/65R17	104	S		738	240	7J	9.5	900	300
	265/65R17	112	S		776	272	8J	9.5	1120	300
18	215/55R18	99	H	XL	693	226	7J	9.5	775	340
	225/40R18	92	H	XL	637	230	8J	9.5	630	340
	235/40R18	95	V	XL	645	241	8 1/2J	8.8	690	340
	235/45R18	98	V	XL	669	236	8J	9.5	750	340
	235/45R18	98	H	XL	669	236	8J	9.5	750	340
	235/55R18	104	H	XL	715	245	7 1/2J	9.5	900	340
	245/40R18	97	V	XL	653	248	8 1/2J	9.5	730	340
	245/40R18	97	H	XL	653	248	8 1/2J	9.5	730	340
	245/45R18	100	V	XL	677	243	8J	9.5	800	340
	245/45R18	100	H	XL	677	243	8J	9.5	800	340
19	255/55R18	109	V	XL	737	265	8J	9.5	1030	340
	255/55R18	109	H	XL	737	265	8J	9.5	1030	340
	225/40R19	93	V	XL	663	230	8J	8.8	650	340
	245/40R19	98	H	XL	679	248	8 1/2J	9.5	750	340
	245/55R19	103	V		753	253	7 1/2J	9.5	875	300
	245/55R19	103	H		753	253	7 1/2J	9.5	875	300
	255/35R19	96	H	XL	661	260	9J	9.5	710	340
	255/40R19	100	V	XL	687	260	9J	9.5	800	340
	255/50R19	107	H	XL	739	265	8J	9.5	975	340
	275/35R19	100	H	XL	675	278	9 1/2J	9.5	800	340
20	275/40R20	106	V	XL	728	278	9 1/2J	8.8	950	340
	275/45R20	110	V	XL	756	273	9J	8.8	1060	340
21	295/35R21	107	V	XL	739	301	10 1/2J	8.8	975	340

● XL Extra Load LI Load Index SS Speed Symbol

# 9W55

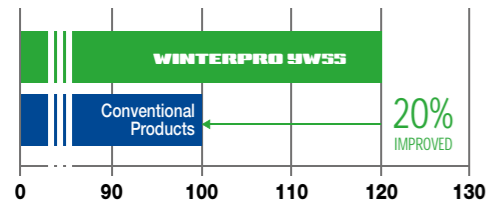
A winter tire product for commercial light trucks.

**NEW**



- Control**  
 Circumferential winding pattern grooves provide excellent drainage of snow and water to increase control in wet conditions.
- Block Design**  
 Intersecting blocks, grooves, and sipes ensure greater control and braking while driving on ice.
- Grip**  
 Specialized tread recipe for icy and snowy weather; the tire is set with precision cut sipes to enable for stronger grip while driving and effectively reduces fuel cost.

### Tire Anti-Skid Capabilities



Ensure compounds have low glass transition temperature by using various compound mixtures which offer excellent snow and ice properties.

### Comfort

Optimized ground contact area which provides a more stable and comfortable ride.



	Size	LI	SS		Overall Diameter	Section Width	Standard Rim	Tread Depth	Max Load	Pressure
					mm	mm		mm	kg	KPa
12	155R12C	8	88/86	R	550	157	4.50B	8.7	560/530	450
13	155R13C	6	85/83	R	578	157	4.50B	8.7	515/487	350
14	185R14C	8	102/100	R	650	188	5 1/2J	9.6	850/800	450
	195R14C	8	106/104	R	666	198	5 1/2J	10	950/900	450
15	195/70R15C	8	104/102	S	655	201	6J	10	900/850	450
	205/70R15C	8	106/104	S	669	209	6J	10	950/900	450
	215/70R15C	10	113/111	S	683	221	6 1/2J	10	1150/1090	525
16	225/70R15C	8	112/110	S	697	228	6 1/2J	10	1120/1060	450
	185/75R16C	8	104/102	R	684	184	5J	9.6	900/850	475
	195/60R16C	6	99/97	T	640	201	6J	10.2	775/730	375
	195/65R16C	8	104/102	T	660	201	6J	10	900/850	475
	195/75R16C	8	107/105	R	698	196	5 1/2J	10	975/925	475
	205/65R16C	8	107/105	T	672	209	6J	10	975/925	475
	205/75R16C	10	113/111	R	714	203	5 1/2J	10	1150/1090	525
	215/60R16C	8	108/106	T	664	221	6 1/2J	10	1000/950	475
	215/65R16C	8	109/107	T	686	221	6 1/2J	10	1030/975	475
	215/75R16C	10	116/114	R	728	216	6J	10	1250/1180	525
16	225/65R16C	8	112/110	T	698	228	6 1/2J	10	1120/1060	475
	225/75R16C	10	118/116	R	744	223	6J	10	1320/1250	525
	235/65R16C	8	115/113	R	712	240	7J	10.2	1215/1150	475
	285/65R16C	10	128	N	776	292	8 1/2J	10.2	1800	525

• XL Extra Load    LI Load Index    SS Speed Symbol

# YW60

New sipe design elements greatly improve traction, handling, and stability performance which increase overall driving safety.



Triple 3-D groove



### ● Handling

Tiny grooves absorb and store water which is dispersed on the surface of the ice to enhance grip. The sipe design improves the tire's rigidity which reduces the possibility of deformation while driving. This makes driving more comfortable and braking at high speeds more stable.

### ● Safety

The design of the grooves allows for effective discharge of snow and mud to ensure a safe ride.

### ● Grip

Tread with various tiny grooves and large pattern blocks enhance tire grip while effectively improving the traction and braking performance on icy roads.



### ● Anti-skid

90° angle shoulder design improves anti-skid performance to dramatically increase driving safety.

### ● Stability

Three-dimensional shoulder design enhances grip and ground stability.



	SIZE	LI	SS		Overall Diameter	Section Width	Standard Rim	Tread Depth	Max.Load	Max.Pressure
					mm	mm		mm	kg	KPa
13	155/70R13	75	T		548	157	4.50B	8.5	387	300
	165/70R13	83	T	XL	562	170	5.00B	8.5	487	340
	175/70R13	82	T		576	177	5.00B	8.5	475	300
14	155/65R13	73	T		532	157	4.50B	8.5	365	300
	165/70R14	85	T	XL	588	170	5J	8.5	515	340
	175/70R14	88	T	XL	602	177	5J	8.5	560	340
	185/70R14	88	H		616	189	5 1/2J	8.5	560	300
	195/70R14	91	H		630	201	6J	8.5	615	300
	205/70R14	98	H	XL	644	209	6J	8.5	750	340
	175/65R14	82	H		584	177	5J	8.5	475	300
15	185/65R14	86	T		596	189	5 1/2J	8.5	530	300
	195/65R14	89	T		610	201	6J	8.5	580	300
	185/60R14	82	T		578	189	5 1/2J	8.5	475	300
	195/60R14	86	T		590	201	6J	8.5	530	300
	215/75R15	100	S		703	216	6J	10.5	800	300
	235/75R15	109	S	XL	733	235	6 1/2J	10.5	1030	340
	205/70R15	96	T		669	209	6J	8.5	710	300
16	215/70R15	98	T		683	221	6 1/2J	8.5	750	300
	185/65R15	88	T		621	189	5 1/2J	8.5	560	300
	195/65R15	91	T		635	201	6J	8.5	615	300
	205/65R15	94	H		647	209	6J	8.5	670	300
	215/65R15	96	H		661	221	6 1/2J	8.5	710	300
	185/55R15	86	H	XL	585	194	6J	8.5	530	340
	185/60R15	88	H	XL	603	189	5 1/2J	8.5	560	340
17	195/55R15	85	H		595	201	6J	8.5	515	300
	195/60R15	88	T		615	201	6J	8.5	560	300
	215/65R16	98	H		686	221	6 1/2J	8.5	750	300
	205/60R16	96	H	XL	652	209	6J	8.5	710	340
	215/60R16	99	H	XL	664	221	6 1/2J	8.5	775	340
	205/55R16	91	H		632	214	6 1/2J	8.5	615	300
	215/55R17	94	H		668	226	7J	8.5	670	300
18	235/45R17	94	H		644	236	8J	8.5	670	300
	235/60R18	107	T	XL	739	240	7J	10.5	975	340


● XL Extra Load LI Load Index SS Speed Symbol




# YW70

Specially designed for light truck vehicles, this tire design offers greater handling, high load capacity, and longer life.




- 

**Drainage**

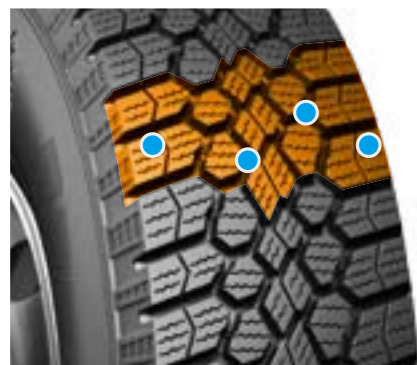
Deep pattern grooves self-clean snow and ensure greater traction.
- 


**Safety**

Silica based tread stays soft at low temperatures to guarantee greater grip and driving safety.
- 

**Handling**

Unique wide tread and contour design improves tire lifetime and ensures stability and driving comfort; unique dimple design below the tread improves snow traction.



- 

**Wear**

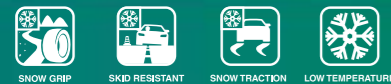
Sidewall is highly-rigid and made of unique compounds to improve resistance to scratches and abrasions.

	SIZE	PR	LI	SS	Overall Diameter	Section Width	Standard Rim	Tread Depth	Max. Load (kg)		Press
					mm	mm		mm	S(kg)	D(kg)	KPa
16	LT225/75R16	10	115/112	Q	744	223	6J	12.5	1215	1120	550
	LT245/75R16	10	120/116	Q	774	248	7J	12.5	1380	1260	550
17	LT235/80R17	10	120/117	Q	808	235	6 1/2J	12.5	1400	1285	550
	LT225/75R17	10	116/113	Q	770	223	6J	12.5	1250	1150	550
	LT245/75R17	10	121/118	Q	800	248	7J	12.5	1450	1320	550
	LT245/70R17	10	119/116	Q	776	248	7J	12.5	1360	1250	550
	LT265/70R17	10	121/118	Q	804	272	8J	12.5	1450	1320	550

● XL Extra Load    LI Load Index    SS Speed Symbol

# YW90

The newly developed YW90 is a studdable winter tire for your car and SUV. The trinity pattern design is constructed and made up of a compound that enhances driving safety and performance in extreme winter weather conditions.



**Safety**

Using a new silica compound formula, the tread maintains its softness to achieve the highest safety performance in low temperature conditions.

**Braking**

Main tread area utilizes four wide circumferential grooves which are designed to aid in effective draining. Each groove employs a jagged design which ensures superior braking power on both icy and snowy roads.

**Grip**

High density groove designs improve braking power on icy roads.

**Silence**

Varied arrangement of studs and multi-pitch tread effectively reduce noise and ensure greater grip on ice and snow.

**Anti-Skid**

Driving safety is increased on ice and snow due to the right-angle design of the shoulder which enhances the vehicle's skid resistance.

**Stability**

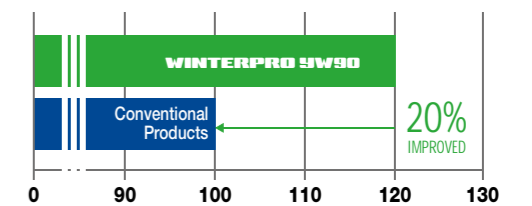
Added 3D design in the shoulder increases the tire's grip when in deep snow and improves traction performance and ground stability.



**Widened Driving Surface and improved crown arc**

Larger contact area provides a more stable ride; improved skidding resistance and driving safety.

**Tire Anti-Skid Capabilities**



	SIZE	LI	SS		Overall Diameter	Section Width	Standard Rim	Tread Depth	Max. Load	Max. Pressure
					mm	mm		mm	kg	KPa
13	175/70R13	82	T		576	177	5.00B	9.9	475	300
	175/70R14	88	T	XL	602	177	5J	9.9	560	340
14	175/65R14	82	H		584	177	5J	9.9	475	300
	185/70R14	92	T	XL	616	189	5 1/2J	9.9	630	340
	185/65R14	86	T		596	189	5 1/2J	9.9	530	300
15	185/65R15	88	T		621	189	5 1/2J	9.9	560	300
	195/65R15	91	T		635	201	6J	9.9	615	300
15	195/60R15	88	T		615	201	6J	9.9	560	300
	205/70R15	96	T		669	209	6J	9.9	710	300
	205/65R15	94	H		647	209	6J	9.9	670	300
	205/60R16	96	H	XL	652	209	6J	9.9	710	340
	205/55R16	91	H		632	214	6 1/2J	9.9	615	300
16	215/70R16	100	S		708	221	6 1/2J	9.9	800	300
	215/65R16	98	H		686	221	6 1/2J	9.9	750	300
	215/60R16	99	H	XL	664	221	6 1/2J	9.9	775	340
	215/60R17	96	S		690	221	6 1/2J	9.9	710	300
	215/50R17	91	T		648	226	7J	9.9	615	300
17	225/65R17	102	S		724	228	6 1/2J	9.9	850	300
	235/65R17	104	S		738	240	7J	9.9	900	300
	265/65R17	112	S		776	272	8J	9.9	1120	300

● XL Extra Load LI Load Index SS Speed Symbol

# FG1 RACING

**NEW**



## FG1 RACING

1. The normal operating state of the tire has good dry and wet performance to meet normal usage needs. When reaching higher operating temperatures the softened tread becomes highly viscous, to improve grip performance and meet competition requirements.
2. Application of a highly polymerized styrene-butadiene.
3. Ultra-fine filling carbon black particles.
4. Usage of functional materials.



The inside of the tire is equipped with tilted blocks and wide groove designs which guarantee improved tire grip and drainage performance.

Increased width of the central area and straight circumferential rib design ensures driving stability when traveling straight at high speeds.

The outside of the tire employs a broad lug design. While turning, the large lugs ensure the vehicle's stability and handling.



Tread pattern grooves are specially angled to prevent damage while emergency braking or drifting.

High-end product with unique sidewall design; employs curved incisions which fully reflects its sporty look.



	Size	LI	SS		Overall Diameter	Section Width	Standard Rim	Tread Depth	Max Load	Pressure	UTQG
					mm	mm		mm	kg	KPa	
15	195/50R15	82	V		577	201	6J	6.5	475	300	180/AA/A
17	225/45ZR17	94	W	XL	634	225	7 1/2J	6.5	670	340	180/AA/A

● XL Extra Load    LI Load Index    SS Speed Symbol

# Tire Basics

## 1. Increased Wear Resistance

Radial tires employ heavy-duty steel wires which, when coupled with even ground contact, increases wear resistance, provides better braking capability, and is comfortable. The radial tire's wear resistance life increases by 50-130% compared to the bias tire. ( Pic 1)

## 2. Fuel Economy

Radial tires have a soft tire carcass which allows for lower rolling resistance. Running the same number of revolutions as the bias, the traveling distance is longer. With a radial tire there is little rolling resistance which saves about 20-25% of force and fuel consumption is lowered by 6-9%. ( Pic 2)

## 3. Increased Maneuverability and Stability

Excellent grip force which increase maneuverability when turning. Radial tires, at the same rotation angle as the bias tires, have a smaller amount of torque which increasing maneuverability and stability. ( Pic 3)

## 4. Low Heat Buildup and Cut Resistance

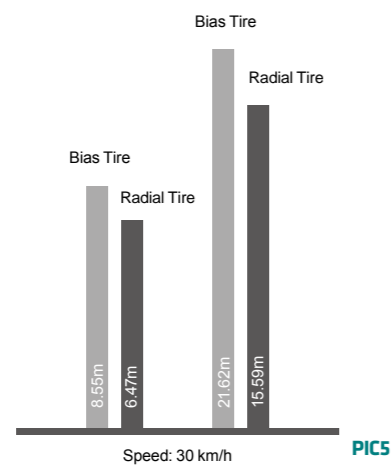
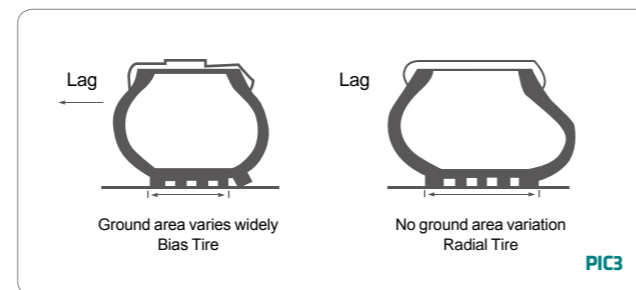
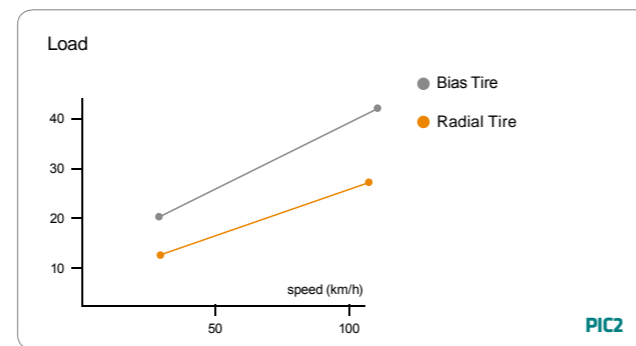
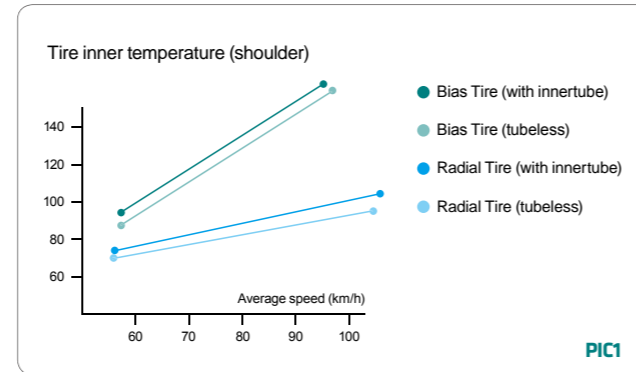
When traveling at 90 km/h, the tire temperature is relative. The carcass uses a metal layer which has great heat dissipation so when driving, the friction on the inside of the tire is low. While moving, the tread doesn't have to work as much which causes over shearing stress on the tire. A radial tire's heat buildup is 25% less than that of bias tire. ( Pic 4)

## 5. Better Braking

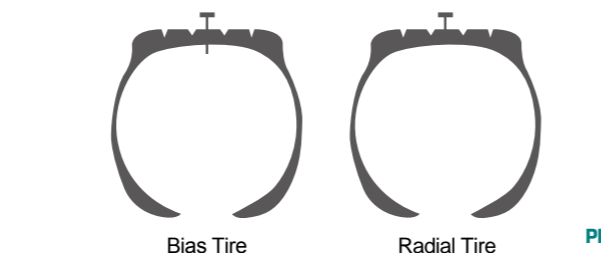
The tire carcass uses a heavy-duty steel wire layer allowing for great braking performance on wet roads. The force of the grip for radial tires is even better, therefore increasing braking efficiency. ( Pic 5)

## 6. Stronger Puncture Resistance

Main reason for adding puncture resistance: rock, glass, nails, and miscellaneous road debris. The radial tire steel tread is strong; the carcass uses a steel wire layer which gives greater protection from these items. ( Pic 6)



Item	Radial Tire	Bias Tire
Inner Temperature	63°C	90°C
Shoulder Temperature	80°C	140°C



# Tire Basics

UHPT (Ultra High Performance Tire) is the shortened name for the best performance tire. Its aspect ratio is less than 55 and has an inner diameter is 16" or higher.

## UHP tire size label



225 / 40 Z R 18 92 Y

- 1 Normal Section Width
  - 2 Normal Aspect Ratio
  - 3 Speed Rating
  - 4 Radial Tire
  - 5 Normal Rim Diameter
  - 6 Load Index
  - 7 Speed Rating
- Aspect Ratio (%) =  $\frac{\text{Section Height(H)}}{\text{Section Width(W)}} \times 100\%$
- Speed Rating: V ≤ 240 km/h, Z > 240 km/h, W ≤ 270 km/h, Y ≤ 300 km/h

## What is a UHP Tire ?

### 1. Pattern

Innovative tread design which uses a wide pattern block to improve maneuverability and offer stronger grip.



### 2. Structure

Section width increase: Wider contact area, increased lateral strength  
 Section height lowered: Tire Sidewall strength increased  
 Rim protection strip: protects the rim, better looking

