

ROADX
TIRE

PASSENGER & LIGHT TRUCK TIRES

CATALOGUE

ROADX
TIRE

Roadx Headquarters
No. 43 Zhengzhou Road,
Shibe District, Qingdao, China
+86 400 660 8329

REV 22.01



CONTENTS

HP	H11	05-06
	H12	07-08

UHP	U01	09-10
	U11	11-12
	U11 RFT/SU01 RFT/H12 RFT	15-16
	SPARTAN II	17-18

ALL-SEASON	4S	19-20
------------	----	-------

AT	A/T	21-22
	A/T02	23-24

SUV	H/T01	25-26
	H/T02	27-28
	SU01	29-30

MT	M/T	31-32
----	-----	-------

LTC	C01	33-34
	C02	35-36

WINTER	WH01	37-38
--------	------	-------

WINTER	WH03	39-40
--------	------	-------

WINTER	WU01	41-42
--------	------	-------

WINTER	WU02	43-44
--------	------	-------

WINTER	WC01	45-46
--------	------	-------

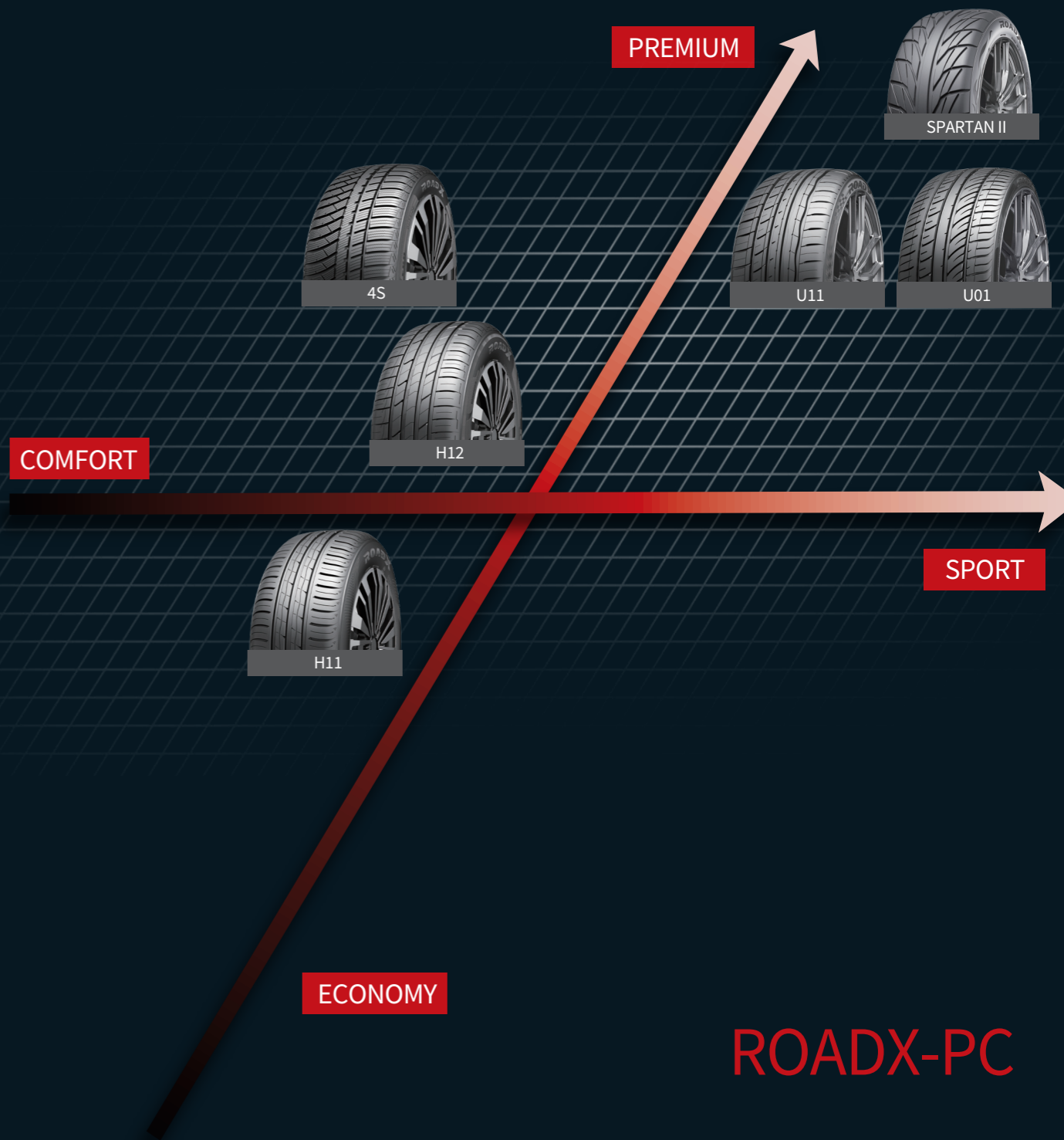
WINTER	WCS01	47-48
--------	-------	-------

WINTER	WH12	49-50
--------	------	-------



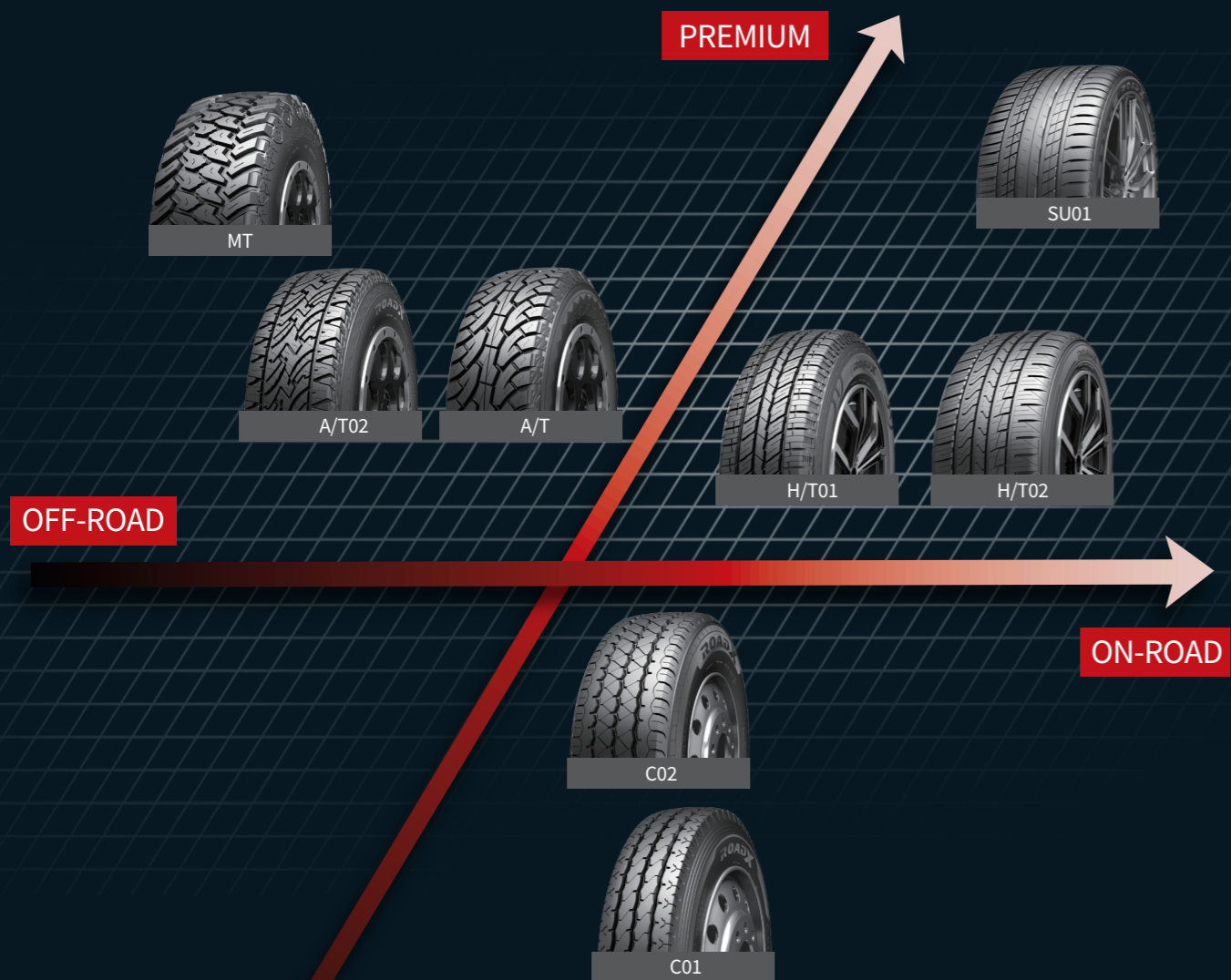
RXMOTION

PRODUCT POSITIONING

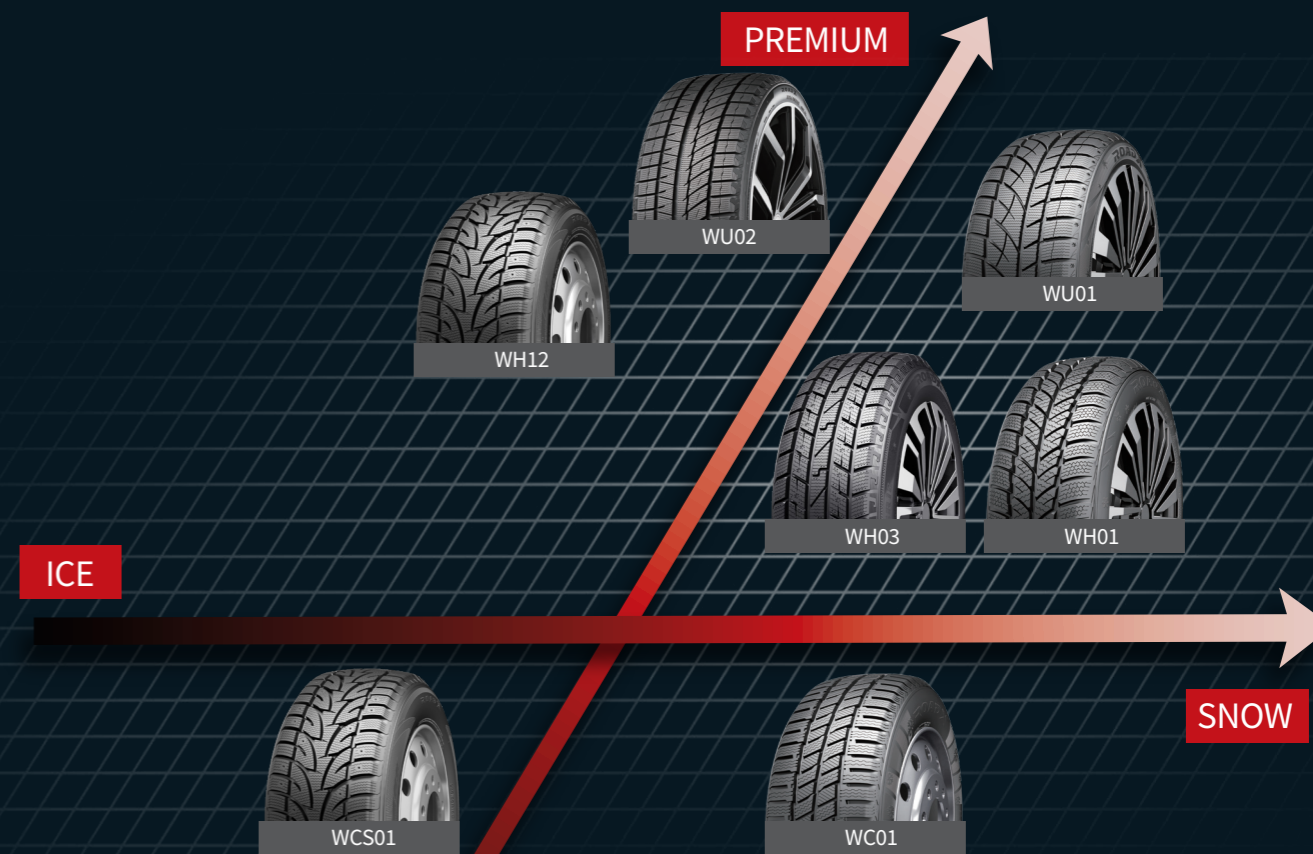


RXQUEST

RXFROST



ROADX-SUV/VAN



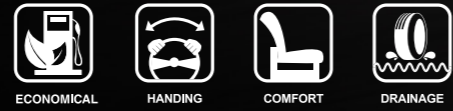
ROADX-WINTER



H11

HP

Designed with eco-friendly compounds to improve fuel efficiency and service life.



ECONOMICAL HANDLING COMFORT DRAINAGE



Handling

Closed shoulder design strengthens shoulder blocks for superior handling performance.



Wet Performance

Main tread grooves and sipes effectively drain water to improve grip and safety on wet roads.



Handling

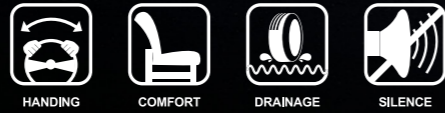
Two central ribs and solid shoulder blocks improve handling for greater driving stability.

RIM	SIZE	PR	LI	SR	XL OR NOT	SIDEWALL	TD (mm)	STANDARD RIM	S.W. (mm)	O.D. (mm)	UTQG	MAX.LOAD (kg)	PRESSURE (kpa)
13	145/70R13	/	71	T	/	BSW	7.0	4.50B	150	534	360/A/A	345	300
	145/80R13	/	75	T	/	BSW	7.0	4.00B	145	562	360/A/A	387	300
	155/65R13	/	73	T	/	BSW	7.3	4.50B	157	532	360/A/A	365	300
	155/70R13	/	75	T	/	BSW	7.0	4.50B	157	548	360/A/A	387	300
	155/80R13	/	79	T	/	BSW	7.0	4.50B	157	578	360/A/A	437	300
	165/65R13	/	77	T	/	BSW	7.2	5.00B	170	544	360/A/A	412	300
	165/70R13	/	79	T	/	BSW	7.2	5.00B	170	562	360/A/A	437	300
	165/70R13	/	83	T	XL	BSW	7.2	5.00B	170	562	360/A/A	487	340
	165/80R13	/	83	T	/	BSW	7.2	4.50B	165	594	360/A/A	487	300
	175/70R13	/	82	T	/	BSW	7.2	5.00B	177	576	360/A/A	475	300
	175/70R13	/	82	T	/	RWL	7.2	5 J	177	576	360/A/A	475	300
	185/70R13	/	86	T	/	BSW	7.4	5.50B	189	590	360/A/A	530	300
	185/70R13	/	86	T	/	RWL	7.4	5 1/2J	189	590	360/A/A	530	300
	14	155/65R14	/	75	T	/	BSW	7.0	4 1/2J	157	558	360/A/A	387
165/60R14		/	75	H	/	BSW	7.2	5J	170	554	360/A/A	387	300
165/65R14		/	79	T	/	BSW	7.2	5J	170	570	360/A/A	437	300
165/70R14		/	85	T	XL	BSW	7.2	5J	170	588	360/A/A	515	340
165/70R14		/	81	T	/	BSW	7.2	5J	170	588	360/A/A	462	300
165/80R14		/	85	T	/	BSW	7.2	4 1/2J	165	620	360/A/A	515	300
175/65R14		/	86	T	XL	BSW	7.2	5J	177	584	360/A/A	530	340
175/65R14		/	82	T	/	BSW	7.2	5J	177	584	360/A/A	475	300
175/70R14		/	88	T	XL	BSW	7.2	5J	177	602	360/A/A	560	340
175/70R14		/	84	T	/	BSW	7.2	5J	177	602	360/A/A	500	300
185/60R14		/	82	H	/	BSW	7.4	5 1/2J	189	578	360/A/A	475	300
185/65R14		/	86	H	/	BSW	7.4	5 1/2J	189	596	360/A/A	530	300
185/70R14		/	88	T	/	BSW	7.4	5 1/2J	189	616	360/A/A	560	300
185/70R14		/	88	H	/	BSW	7.4	5 1/2J	189	616	360/A/A	560	300
185/70R14	/	88	T	/	RWL	7.4	5 1/2J	189	616	360/A/A	560	300	
15	195/60R14	/	86	H	/	BSW	8.0	6J	201	590	360/A/A	530	300
	195/65R14	/	89	H	/	BSW	7.4	6J	201	610	360/A/A	580	300
	195/70R14	/	91	T	/	BSW	7.4	6J	201	630	360/A/A	615	300
	195/70R14	/	91	T	/	RWL	7.4	6J	201	630	360/A/A	615	300
	165/60R15	/	77	H	/	BSW	7.2	5J	170	554	360/A/A	412	300

1inch=25.4mm | 1kPa=0.142psi | 1KG≈2.2 lbs | XL Extra Load | LI Load Index | SS Speed Symbol

H12 HP

Designed for safety and performance on both wet and dry roads.



High-Speed Performance

Asymmetric pattern design maximizes the tire's contact footprint area for greater cornering and high-speed driving stability on dry roads.



Driving Safety

Tread groove design effectively drains water and disperses heat.



Wet Performance

Tread sipes effectively break through water film to improve handling and grip on wet roads.



RIM	SIZE	PR	LI	SR	XL OR NOT	SIDEWALL	TD (mm)	STANDARD RIM	S.W. (mm)	O.D. (mm)	UTQG	MAX.LOAD (kg)	PRESSURE (kpa)
14	185/55R14	/	80	V	/	BSW	7.4	6J	194	560	360/A/A	450	300
	205/60R14	/	88	H	/	BSW	7.7	6J	209	602	360/A/A	560	300
	205/70R14	/	98	T	XL	BSW	7.7	6J	209	644	360/A/A	750	340
	205/75R14	/	95	T	/	WR	7.7	5 1/2J	203	664	360/A/A	690	300
	215/75R14	/	100	T	/	WR	7.7	6J	216	678	360/A/A	800	300
15	165/65R15	/	81	H	/	BSW	7.2	5J	170	595	360/A/A	462	300
	175/55R15	/	77	H	/	BSW	7.6	5 1/2J	182	573	360/A/A	412	300
	175/65R15	/	88	H	XL	BSW	7.2	5J	177	609	360/A/A	560	340
	175/65R15	/	84	H	/	BSW	7.2	5J	177	609	360/A/A	500	300
	175/65R15	/	84	T	/	BSW	7.2	5J	177	609	360/A/A	500	300
	185/55R15	/	82	V	/	BSW	7.4	6J	194	585	360/A/A	475	300
	185/60R15	/	88	H	XL	BSW	7.4	5 1/2J	189	603	360/A/A	560	340
	185/60R15	/	84	H	/	BSW	7.4	5 1/2J	189	603	360/A/A	500	300
	185/65R15	/	92	H	XL	BSW	7.4	5 1/2J	189	621	360/A/A	630	340
	185/65R15	/	88	H	/	BSW	7.4	5 1/2J	189	621	360/A/A	560	300
	195/45R15	/	78	W	/	BSW	7.4	6 1/2J	195	557	360/A/A	425	300
	195/50R15	/	82	V	/	BSW	7.4	6J	201	577	360/A/A	475	300
	195/55R15	/	85	V	/	BSW	7.4	6J	201	595	360/A/A	515	300
	195/60R15	/	88	H	/	BSW	7.4	6J	201	615	360/A/A	560	300
	195/60R15	/	88	V	/	BSW	7.4	6J	201	615	360/A/A	560	300
	195/65R15	/	91	V	/	BSW	7.4	6J	201	635	360/A/A	615	300
	195/65R15	/	95	H	XL	BSW	7.4	6J	201	635	360/A/A	690	340
	195/65R15	/	91	H	/	BSW	7.4	6J	201	635	360/A/A	615	300
	195/65R15	/	95	H	XL	RWL	7.4	6J	201	635	360/A/A	690	340
	205/50R15	/	89	V	XL	BSW	7.7	6 1/2J	214	587	360/A/A	580	340
	205/60R15	/	95	V	XL	BSW	7.7	6J	209	627	360/A/A	690	340
	205/65R15	/	94	V	/	BSW	7.7	6J	209	647	360/A/A	670	300
	205/70R15	/	96	H	/	BSW	7.7	6J	209	669	360/A/A	710	300
205/70R15	/	96	H	/	WR	7.7	6J	209	669	360/A/A	710	300	
205/75R15	/	97	T	/	WR	7.7	5 1/2J	203	689	360/A/A	730	300	
215/60R15	/	98	V	XL	BSW	7.7	6 1/2J	221	639	360/A/A	750	340	
215/65R15	/	96	V	/	BSW	7.7	6 1/2J	221	661	360/A/A	710	300	
215/70R15	/	98	H	/	BSW	7.7	6 1/2J	221	683	360/A/A	750	300	
215/70R15	/	98	H	/	WR	7.7	6 1/2J	221	683	360/A/A	750	300	
215/75R15	/	100	T	/	WR	7.7	6J	216	703	360/A/A	800	300	
225/60R15	/	96	V	/	BSW	7.7	6 1/2J	228	651	360/A/A	710	300	
225/70R15	/	100	T	/	WR	7.7	6 1/2J	228	697	360/A/A	800	300	
225/75R15	/	102	T	/	WR	7.7	6J	223	719	360/A/A	850	300	
235/75R15	/	105	T	/	WR	7.7	6 1/2J	235	733	360/A/A	925	300	
16	175/60R16	/	82	H	/	BSW	7.4	5J	177	616	360/A/A	475	300
	185/55R16	/	83	V	/	BSW	7.4	6J	194	610	360/A/A	487	300
	185/55R16	/	87	V	XL	BSW	7.4	6J	194	610	360/A/A	545	340
	185/60R16	/	86	H	/	BSW	7.4	5 1/2J	189	628	360/A/A	530	300
	195/45R16	/	84	W	XL	BSW	7.4	6 1/2J	195	582	360/A/A	500	340
	195/45R16	/	84	V	XL	BSW	7.4	6 1/2J	195	582	360/A/A	500	340
	195/50R16	/	88	V	XL	BSW	7.4	6J	201	602	360/A/A	560	340
	195/55R16	/	91	V	XL	BSW	7.4	6J	201	620	360/A/A	615	340
	195/55R16	/	87	V	/	BSW	7.4	6J	201	620	360/A/A	545	300
	195/55RF16	/	91	V	XL	BSW	7.4	6J	201	620	360/A/A	615	340
	195/60R16	/	89	V	/	BSW	7.4	6J	201	640	360/A/A	580	300
	205/45R16	/	87	W	XL	BSW	8.0	7J	206	590	360/A/A	545	340
	205/55R16	/	91	V	/	BSW	7.7	6 1/2J	214	632	360/A/A	615	300
	205/55R16	/	94	V	XL	BSW	7.7	6 1/2J	214	632	360/A/A	670	340
	205/60R16	/	96	V	XL	BSW	7.7	6J	209	652	360/A/A	710	340
	205/60R16	/	92	V	/	BSW	7.7	6J	209	652	360/A/A	630	300
	205/65R16	/	95	H	/	BSW	7.7	6J	209	672	360/A/A	690	300
	215/60R16	/	95	V	/	BSW	7.7	6 1/2J	221	664	360/A/A	690	300
215/60R16	/	99	V	XL	BSW	7.7	6 1/2J	221	664	360/A/A	775	340	
215/65R16	/	98	H	/	BSW	7.7	6 1/2J	221	686	360/A/A	750	300	
225/60R16	/	102	V	XL	BSW	7.7	6 1/2J	228	676	360/A/A	850	340	
235/60R16	/	100	V	/	BSW	8.0	7J	240	688	360/A/A	800	300	
17	215/65R17	/	103	V	XL	BSW	7.7	6 1/2J	221	712	360/A/A	875	340
18	215/55R18	/	99	V	XL	BSW	7.7	7J	226	693	360/A/A	775	340

U01

UHP

The U01's tread compound offers excellent handling and lowers rolling resistance for improved fuel economy.



ECONOMICAL



HANDLING



DRAINAGE



RIM PROTECTION



Wet Performance

The tread's main grooves effectively drain water for improved grip and safety on wet roads.



Driving Comfort

The varied pitch design better absorbs vibrations to improve driving comfort.



Summer Performance

The reinforced center rib and wide contact area offer better handling and braking performance for overall better responsiveness.

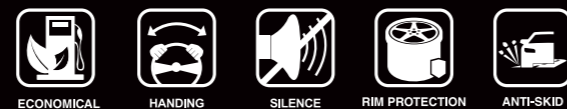
RIM	SIZE	PR	LI	SR	XL OR NOT	SIDEWALL	TD (mm)	STANDARD RIM	SW (mm)	OD (mm)	UTQG	MAX.LOAD (kg)	PRESSURE (kpa)
16	205/45ZR16	/	87	W	XL	BSW	8.0	7J	206	590	280/AA/A	545	340
	205/50ZR16	/	87	W	/	BSW	8.2	6 1/2J	214	612	280/AA/A	545	300
17	205/40ZR17	/	84	W	XL	BSW	8.2	7 1/2J	212	596	280/AA/A	500	340
	205/45ZR17	/	88	W	XL	BSW	8.0	7J	206	616	280/AA/A	560	340
	215/45ZR17	/	91	W	XL	BSW	8.2	7J	213	626	280/AA/A	615	340
	215/50ZR17	/	95	W	XL	BSW	8.2	7J	226	648	280/AA/A	690	340
	225/45ZR17	/	94	W	XL	BSW	8.2	7 1/2J	225	634	280/AA/A	670	340
	225/50ZR17	/	98	Y	XL	BSW	8.2	7J	233	658	280/AA/A	750	340
18	225/55ZR17	/	97	W	/	BSW	8.2	7J	233	680	280/AA/A	730	300
	225/40ZR18	/	92	W	XL	BSW	8.2	8J	230	637	280/AA/A	630	340
	225/45ZR18	/	95	W	XL	BSW	8.2	7 1/2J	225	659	280/AA/A	690	340
	235/40ZR18	/	95	W	XL	BSW	8.2	8 1/2J	241	645	280/AA/A	690	340
	235/50ZR18	/	101	W	XL	BSW	8.2	7 1/2J	245	693	280/AA/A	825	340

1inch=25.4mm | 1kPa=0.142psi | 1KG=2.2 lbs | XL Extra Load | LI Load Index | SS Speed Symbol

U11

UHP

Innovative high performance tire that combines comfort and greater fuel economy.



ECONOMICAL HANDLING SILENCE RIM PROTECTION ANTI-SKID



Fuel Economy

The tread compound effectively reduces rolling resistance for greater fuel economy.



Driving Comfort

The varied pitch design better absorbs vibrations to improve driving comfort.



Overall Performance

The asymmetric tread pattern improves grip and handling for more responsive steering and braking.



Wet Performance

Tread pattern design effectively expels water to allow for greater grip and handling on wet roads.

RIM	SIZE	PR	LI	SR	XL OR NOT	SIDEWALL	TD (mm)	STANDARD RIM	SW (mm)	OD (mm)	UTQG	MAX.LOAD (kg)	PRESSURE (kpa)	MARK
15	185/45ZR15	/	75	Y	/	BSW	7.5	6J	183	547	280/AA/A	387	300	/
16	205/50ZR16	/	87	W	/	BSW	8.0	6 1/2J	214	612	280/AA/A	545	300	/
	205/55ZR16	/	94	W	XL	BSW	8.2	6 1/2J	214	632	280/AA/A	670	340	/
	215/45R16	/	90	V	XL	BSW	7.5	7J	213	600	280/AA/A	600	340	/
	215/45ZR16	/	90	Y	XL	BSW	7.5	7J	213	600	280/AA/A	600	340	/
	215/55ZR16	/	97	W	XL	BSW	8.2	7J	226	642	280/AA/A	730	340	/
	225/55ZR16	/	99	W	XL	BSW	8.2	7J	233	654	280/AA/A	775	340	/
	225/55ZR16	/	99	Y	XL	BSW	8.2	7J	233	654	280/AA/A	775	340	/

1inch=25.4mm | 1kPa=0.142psi | 1KG=2.2 lbs | XL Extra Load | LI Load Index | SS Speed Symbol



U11

RIM	SIZE	PR	LI	SR	XL OR NOT	SIDEWALL	TD (mm)	STANDARD RIM	SW (mm)	OD (mm)	UTQG	MAX.LOAD (kg)	PRESSURE (kpa)	MARK
17	185/45ZR17	/	82	Y	XL	BSW	7.5	6J	183	598	280/AA/A	475	340	/
	195/40ZR17	/	81	Y	XL	BSW	7.5	7J	200	588	280/AA/A	462	340	/
	195/45ZR17	/	85	Y	XL	BSW	7.5	6 1/2J	195	608	280/AA/A	515	340	/
	205/40ZR17	/	84	W	XL	BSW	8.0	7 1/2J	212	596	280/AA/A	500	340	/
	205/45ZR17	/	88	W	XL	BSW	8.0	7J	206	616	280/AA/A	560	340	/
	205/50ZR17	/	93	W	XL	BSW	8.0	6 1/2J	214	638	280/AA/A	650	340	/
	205/55ZR17	/	95	Y	XL	BSW	7.5	6 1/2J	214	658	280/AA/A	690	340	/
	215/40ZR17	/	87	Y	XL	BSW	7.5	7 1/2J	218	604	280/AA/A	545	340	/
	215/45ZR17	/	91	W	XL	BSW	8.0	7J	213	626	280/AA/A	615	340	/
	215/45ZR17	/	91	Y	XL	BSW	8.0	7J	213	626	280/AA/A	615	340	/
	215/50ZR17	/	95	W	XL	BSW	8.0	7J	226	648	280/AA/A	690	340	/
	215/55ZR17	/	94	W	/	BSW	8.0	7J	226	668	280/AA/A	670	300	/
	215/55ZR17	/	98	W	XL	BSW	8.0	7J	226	668	280/AA/A	750	340	/
	225/45ZR17	/	94	W	XL	BSW	8.0	7 1/2J	225	634	280/AA/A	670	340	/
	225/45ZR17	/	94	Y	XL	BSW	8.0	7 1/2J	225	634	280/AA/A	670	340	/
	225/50ZR17	/	98	W	XL	BSW	8.2	7J	233	658	280/AA/A	750	340	/
	225/55ZR17	/	101	W	XL	BSW	8.2	7J	233	680	280/AA/A	825	340	/
	235/45ZR17	/	97	W	XL	BSW	8.2	8J	236	644	280/AA/A	730	340	/
	235/50ZR17	/	100	Y	XL	BSW	7.5	7 1/2J	245	668	280/AA/A	800	340	/
	245/40ZR17	/	95	W	XL	BSW	8.0	8 1/2J	248	628	280/AA/A	690	340	/
	245/45ZR17	/	99	Y	XL	BSW	7.5	8J	243	652	280/AA/A	775	340	/
18	215/35ZR18	/	84	Y	XL	BSW	7.5	7 1/2J	218	607	280/AA/A	500	340	/
	215/40ZR18	/	89	Y	XL	BSW	7.5	7 1/2J	218	629	280/AA/A	580	340	/
	215/45ZR18	/	93	Y	XL	BSW	7.5	7J	213	651	280/AA/A	650	340	/
	225/35ZR18	/	87	Y	XL	BSW	7.5	8J	230	615	280/AA/A	545	340	/
	225/40ZR18	/	92	W	XL	BSW	8.0	8J	230	637	280/AA/A	630	340	/
	225/45ZR18	/	95	W	XL	BSW	8.0	7 1/2J	225	659	280/AA/A	690	340	/
	225/50ZR18	/	95	W	/	BSW	7.5	7J	233	683	280/AA/A	690	300	/
	235/35ZR18	/	90	Y	XL	BSW	7.5	8 1/2J	241	621	280/AA/A	600	340	/
	235/40ZR18	/	95	W	XL	BSW	8.0	8 1/2J	241	645	280/AA/A	690	340	/
	235/45ZR18	/	98	Y	XL	BSW	7.5	8J	236	669	280/AA/A	750	340	/
	235/50ZR18	/	101	W	XL	BSW	7.5	7 1/2J	245	693	280/AA/A	825	340	/
	245/35ZR18	/	92	Y	XL	BSW	7.5	8 1/2J	248	629	280/AA/A	630	340	/
	245/40ZR18	/	97	Y	XL	BSW	8.0	8 1/2J	248	653	280/AA/A	730	340	/
	245/45ZR18	/	100	W	XL	BSW	8.0	8J	243	677	280/AA/A	800	340	/
	245/45ZR18	/	100	Y	XL	BSW	8.0	8J	243	677	280/AA/A	800	340	/
	245/50ZR18	/	104	V	XL	BSW	8.0	7 1/2J	253	703	280/AA/A	900	340	/
	255/35ZR18	/	94	Y	XL	BSW	8.0	9J	260	635	280/AA/A	670	340	/
	255/40ZR18	/	99	Y	XL	BSW	7.5	9J	260	661	280/AA/A	775	340	/
	255/45ZR18	/	103	Y	XL	BSW	7.5	8 1/2J	255	687	280/AA/A	875	340	/
	265/35ZR18	/	97	Y	XL	BSW	7.5	9 1/2J	271	643	280/AA/A	730	340	/
	275/40ZR18	/	103	Y	XL	BSW	7.5	9 1/2J	278	677	280/AA/A	875	340	/

1inch=25.4mm | 1kPa=0.142psi | 1KG≈2.2 lbs | XL Extra Load | LI Load Index | SS Speed Symbol

U11

RIM	SIZE	PR	LI	SR	XL OR NOT	SIDEWALL	TD (mm)	STANDARD RIM	SW (mm)	OD (mm)	UTQG	MAX.LOAD (kg)	PRESSURE (kpa)	MARK
19	205/55R19	/	97	V	XL	BSW	8.0	6 1/2J	214	709	280/AA/A	730	340	/
	215/35ZR19	/	85	Y	XL	BSW	7.5	7 1/2J	218	633	280/AA/A	515	340	/
	225/35ZR19	/	88	Y	XL	BSW	7.5	8J	230	641	280/AA/A	560	340	/
	225/40ZR19	/	93	Y	XL	BSW	7.5	8J	230	663	280/AA/A	650	340	/
	235/35ZR19	/	91	Y	XL	BSW	8.0	8 1/2J	241	647	280/AA/A	615	340	/
	235/40ZR19	/	96	Y	XL	BSW	7.5	8 1/2J	241	671	280/AA/A	710	340	/
	235/45ZR19	/	99	Y	XL	BSW	7.5	8J	236	695	280/AA/A	775	340	/
	245/35ZR19	/	93	Y	XL	BSW	8.0	8 1/2J	248	655	280/AA/A	650	340	/
	245/40ZR19	/	98	Y	XL	BSW	8.0	8 1/2J	248	679	280/AA/A	750	340	/
	245/45ZR19	/	102	Y	XL	BSW	7.5	8J	243	703	280/AA/A	850	340	/
	255/30ZR19	/	91	Y	XL	BSW	7.5	9J	260	637	280/AA/A	615	340	/
	255/35ZR19	/	96	Y	XL	BSW	8.0	9J	260	661	280/AA/A	710	340	/
	255/45ZR19	/	104	W	XL	BSW	8.0	8 1/2J	255	713	280/AA/A	900	340	/
	255/50ZR19	/	107	Y	XL	BSW	8.0	8J	265	739	280/AA/A	975	340	/
	265/30ZR19	/	93	Y	XL	BSW	8.0	9 1/2J	271	643	280/AA/A	650	340	/
	265/35ZR19	/	98	Y	XL	BSW	7.5	9 1/2J	271	669	280/AA/A	750	340	/
	275/30ZR19	/	96	Y	XL	BSW	8.0	9 1/2J	278	649	280/AA/A	710	340	/
	275/35ZR19	/	100	Y	XL	BSW	8.0	9 1/2J	278	675	280/AA/A	800	340	/
	275/40ZR19	/	105	Y	XL	BSW	7.5	9 1/2J	278	703	280/AA/A	925	340	/
	275/45ZR19	/	108	Y	XL	BSW	7.5	9J	273	731	280/AA/A	1000	340	/
	285/45ZR19	/	111	Y	XL	BSW	8.0	9 1/2J	285	739	280/AA/A	1090	340	/
	285/30ZR19	/	98	Y	XL	BSW	7.5	10J	290	655	280/AA/A	750	340	/
20	195/55R20	/	95	H	XL	BSW	7.5	6J	201	722	280/AA/A	690	340	/
	225/30ZR20	/	85	Y	XL	BSW	7.5	8J	230	644	280/AA/A	515	340	/
	245/35ZR20	/	95	Y	XL	BSW	7.5	8 1/2J	248	680	280/AA/A	690	340	/
	245/40ZR20	/	99	Y	XL	BSW	7.5	8 1/2J	248	704	280/AA/A	775	340	/
	245/50ZR20	/	102	W	/	BSW	7.5	7 1/2J	253	754	280/AA/A	850	300	/
	255/35ZR20	/	97	Y	XL	BSW	7.5	9J	260	686	280/AA/A	730	340	/
	255/40ZR20	/	101	Y	XL	BSW	7.5	9J	260	712	280/AA/A	825	340	/
	265/35ZR20	/	99	Y	XL	BSW	7.5	9 1/2J	271	694	280/AA/A	775	340	/
	265/50ZR20	/	111	Y	XL	BSW	7.5	8 1/2J	277	774	280/AA/A	1090	340	/
	275/35ZR20	/	102	Y	XL	BSW	7.5	9 1/2J	278	700	280/AA/A	850	340	/
	275/40ZR20	/	106	Y	XL	BSW	8.0	9 1/2J	278	728	280/AA/A	950	340	/
	275/45ZR20	/	110	Y	XL	BSW	8.0	9J	273	756	280/AA/A	1060	340	/
	285/30ZR20	/	99	Y	XL	BSW	7.5	10J	290	680	280/AA/A	775	340	/
	295/35ZR20	/	105	Y	XL	BSW	7.5	10 1/2J	301	714	280/AA/A	925	340	/
	315/35ZR20	/	110	Y	XL	BSW	8.0	11J	320	728	280/AA/A	1060	340	/
21	275/30ZR21	/	98	Y	XL	BSW	7.5	9 1/2J	278	699	280/AA/A	750	340	/
	275/35ZR21	/	103	Y	XL	BSW	7.5	9 1/2J	278	725	280/AA/A	875	340	/
	285/35ZR21	/	105	Y	XL	BSW	8.0	10J	290	733	280/AA/A	925	340	/
	295/35ZR21	/	107	Y	XL	BSW	8.0	10 1/2J	301	739	280/AA/A	975	340	/
	325/30ZR21	/	108	Y	XL	BSW	8.0	11 1/2J	331	729	280/AA/A	1000	340	/
22	265/40ZR22	/	106	Y	XL	BSW	7.5	9 1/2J	271	771	280/AA/A	950	340	/

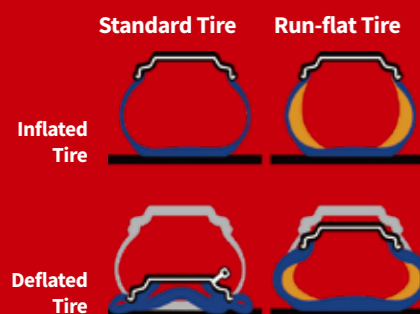
1inch=25.4mm | 1kPa=0.142psi | 1KG≈2.2 lbs | XL Extra Load | LI Load Index | SS Speed Symbol

RUN FLAT

NEW TECHNOLOGY

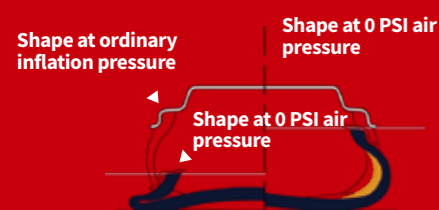
NEW TECHNOLOGY GREATER SAFETY
H12 RFT / SU01 RFT / U11 RFT

U11 RFT SU01 RFT H12 RFT



RFT Product Features

1. No more delays or being stranded on remote highways due to a flat tire. RFT products will continue to drive at up to 80 KPH without having to be replaced immediately.
2. Helps to avoid accidents caused by the loss of control from punctures or air leaks, increasing overall safety.
3. Even when the tire begins leaking air you can drive to your local tire dealer to have it repaired. RFT technology also means there is no need to carry a spare which helps increase storage space within the vehicle.



Run-flat tires (RFT), also known as “self-supporting run-flat tires,” are an important safety feature for any vehicle. A Run-flat tire is built with a thicker sidewall to help support the tire shape after losing air. This allows the tire to continue to run safely, but at a limited speed and mileage. When normal tires are punctured, they can instantly lead to a severe sidewall collapse; in the event of a collapse, the vehicle loses its only support which can cause the vehicle's center of gravity to change instantaneously. RFT helps to lessen the severity of a flat tire and allows you to get to the closest destination safely.

RIM	SIZE	PR	LI	SR	XL OR NOT	SIDEWALL	TD (mm)	STANDARD RIM	SW (mm)	OD (mm)	UTQG	MAX.LOAD (kg)	PRESSURE (kpa)	MARK
U11 RFT														
16	205/55ZRF16	/	94	W	XL	BSW	8.2	6 1/2J	214	632	280/AA/A	670	340	RFT
	205/55ZRF16	/	91	W	/	BSW	8.2	6 1/2J	214	632	280/AA/A	615	300	RFT
	225/55ZRF16	/	99	W	XL	BSW	8.2	7J	233	654	280/A/A	775	340	RFT
	225/55ZRF16	/	95	W	/	BSW	8.2	7J	233	654	280/A/A	690	300	RFT
17	205/45ZRF17	/	88	W	XL	BSW	8.0	7J	206	616	280/AA/A	560	340	RFT
	205/45ZRF17	/	84	W	/	BSW	8.0	7J	206	616	280/AA/A	500	300	RFT
	205/50ZRF17	/	93	W	XL	BSW	8.0	6 1/2J	214	638	280/AA/A	650	340	RFT
	205/50ZRF17	/	89	W	/	BSW	8.0	6 1/2J	214	638	280/AA/A	580	300	RFT
	205/55RF17	/	91	V	/	BSW	7.5	6 1/2J	214	658	280/A/A	615	300	RFT
	225/45ZRF17	/	94	W	XL	BSW	8.0	7 1/2J	225	634	280/AA/A	670	340	RFT
	225/45ZRF17	/	91	W	/	BSW	8.0	7 1/2J	225	634	280/AA/A	615	300	RFT
	225/50ZRF17	/	98	W	XL	BSW	8.2	7J	233	658	280/AA/A	750	340	RFT
	225/50ZRF17	/	94	W	/	BSW	8.2	7J	233	658	280/AA/A	670	300	RFT
	225/55ZRF17	/	101	W	XL	BSW	8.2	7J	233	680	280/AA/A	825	340	RFT
	225/55ZRF17	/	97	W	/	BSW	8.2	7J	233	680	280/AA/A	730	300	RFT
18	215/40ZRF18	/	85	Y	/	BSW	7.5	7 1/2J	218	629	280/A/A	515	300	RFT
	225/40ZRF18	/	92	W	XL	BSW	8.0	8J	230	637	280/AA/A	630	340	RFT
	225/40ZRF18	/	88	W	/	BSW	8.0	8J	230	637	280/AA/A	560	300	RFT
	225/45ZRF18	/	95	W	XL	BSW	8.0	7 1/2J	225	659	280/A/A	690	340	RFT
	225/45ZRF18	/	91	W	/	BSW	8.0	7 1/2J	225	659	280/A/A	615	300	RFT
	245/35ZRF18	/	92	Y	XL	BSW	7.5	8 1/2J	248	629	280/A/A	630	340	RFT
	245/40ZRF18	/	97	Y	XL	BSW	8.0	8 1/2J	248	653	280/AA/A	730	340	RFT
	245/40ZRF18	/	93	Y	/	BSW	8.0	8 1/2J	248	653	280/AA/A	650	300	RFT
	245/45ZRF18	/	100	W	XL	BSW	8.0	8J	243	677	280/AA/A	800	340	RFT
	245/45ZRF18	/	96	W	/	BSW	8.0	8J	243	677	280/AA/A	710	300	RFT
	245/50ZRF18	/	100	Y	/	BSW	8.0	7 1/2J	253	703	280/AA/A	800	300	RFT
	255/35ZRF18	/	94	Y	XL	BSW	8.0	9J	260	635	280/AA/A	670	340	RFT
	255/35ZRF18	/	90	Y	/	BSW	8.0	9J	260	635	280/AA/A	600	300	RFT
19	225/40ZRF19	/	89	W	/	BSW	7.5	8J	230	663	280/A/A	580	300	RFT
	235/45ZRF19	/	99	W	XL	BSW	7.5	8J	236	695	280/A/A	775	340	RFT
	235/45ZRF19	/	95	W	/	BSW	7.5	8J	236	695	280/A/A	690	300	RFT
	245/40ZRF19	/	98	Y	XL	BSW	8.0	8 1/2J	248	679	280/AA/A	750	340	RFT
	245/40ZRF19	/	94	Y	/	BSW	8.0	8 1/2J	248	679	280/AA/A	670	300	RFT
	245/45ZRF19	/	102	W	XL	BSW	7.5	8J	243	703	280/A/A	850	340	RFT
	245/45ZRF19	/	98	W	/	BSW	7.5	8J	243	703	280/A/A	750	300	RFT
	255/30ZRF19	/	91	Y	XL	BSW	7.5	9J	260	637	280/A/A	615	340	RFT
	255/35ZRF19	/	96	Y	XL	BSW	8.0	9J	260	661	280/A/A	710	340	RFT
	255/50RF19	/	103	V	/	BSW	8.0	8J	265	739	280/AA/A	875	300	RFT
	275/35ZRF19	/	100	Y	XL	BSW	8.0	9 1/2J	278	675	280/AA/A	800	340	RFT
	275/35ZRF19	/	96	Y	/	BSW	8.0	9 1/2J	278	675	280/AA/A	710	300	RFT
	275/40ZRF19	/	101	Y	/	BSW	7.5	9 1/2J	278	703	280/A/A	825	300	RFT
20	245/40ZRF20	/	99	Y	XL	BSW	7.5	8 1/2J	248	704	280/AA/A	775	340	RFT
	275/35ZRF20	/	102	Y	XL	BSW	7.5	9 1/2J	278	700	280/AA/A	850	340	RFT
SU01 RFT														
18	235/50RF18	/	97	V	/	BSW	8.0	7 1/2J	245	693	280/A/A	730	300	RFT
	255/55RF18	/	105	H	/	BSW	8.0	8J	265	737	280/AA/A	925	300	RFT
H12 RFT														
16	195/55RF16	/	91	V	XL	BSW	7.4	6J	201	620	360/A/A	615	340	RFT

SPARTAN II

UHP

RXMotion Spartan II is the first choice for gearheads. This street legal sport specific tire boasts strong grip and exceptional handling for all your on and off track sporting needs. Street legal – not used for drifting. Excellent grip and handling on wet and dry roads.



ECONOMICAL



HANDLING



DRAINAGE



RIM PROTECTION



Widened running surface and varying tread pitch work together to improve surface contact area for improved handling and safety.



The tire shoulder utilizes a large block pattern design with improved durability to effectively improve handling stability.



Tread blocks are designed with a cut angle design which improves the traction in both dry and wet driving conditions.



Reinforced rib design inside the grooves strengthens block durability for better handling.



Wide central rib improves overall driving stability.



Wide grooves and symmetrical tread pattern design effectively improve water drainage for greater safety in wet driving conditions.



Tread structure and pattern details are constructed to improve handling stability as well as reduce noise emissions.

RIM	SIZE	PR	LI	SR	XL OR NOT	SIDEWALL	TD (mm)	STANDARD RIM	S.W. (mm)	O.D. (mm)	UTQG	MAX.LOAD (kg)	PRESSURE (kpa)
15	195/50R15	/	82	V	/	BSW	7.1	6J	201	577	320/A/A	475	300
	195/55R15	/	85	V	/	BSW	7.1	6J	201	595	320/A/A	515	300
18	255/50R18	/	106	V	XL	BSW	7.1	8J	265	713	320/A/A	950	340

1inch=25.4mm | 1kPa=0.142psi | 1KG=2.2 lbs | XL Extra Load | LI Load Index | SS Speed Symbol

4S

ALL-SEASON

Special all-season product for Europe.



SKID RESISTANT SNOW TRACTION HANDLING COMFORT



Safety

New sipe designs greatly improve grip and braking responsiveness.

Driving Comfort

Tread design is optimized for a comfortable drive year-round.

Overall Performance

New groove design pattern greatly improves handling and stability.



Inner Pattern

Improved handling in snow and rain

Outer Pattern

Handling performance and stability in dry conditions



RIM	SIZE	PR	LI	SR	XL OR NOT	SIDEWALL	TD (mm)	STANDARD RIM	S.W. (mm)	O.D. (mm)	UTQG	MAX.LOAD (kg)	PRESSURE (kpa)
13	155/70R13	/	75	T	/	BSW	8.0	4.50B	157	548	300/A/A	387	300
	155/80R13	/	79	T	/	BSW	8.0	4.50B	157	578	300/A/A	437	300
14	155/65R14	/	75	T	/	BSW	8.0	4 1/2J	157	558	300/A/A	387	300
	165/60R14	/	79	H	XL	BSW	8.0	5J	170	554	300/A/A	437	340
	165/65R14	/	79	T	/	BSW	8.0	5J	170	570	300/A/A	437	300
	165/70R14	/	85	T	XL	BSW	8.0	5J	170	588	300/A/A	515	340
	175/65R14	/	82	T	/	BSW	8.5	5J	177	584	300/A/A	475	300
	175/70R14	/	84	T	/	BSW	8.5	5J	177	602	300/A/A	500	300
	175/70R14	/	88	T	XL	BSW	8.5	5J	177	602	300/A/A	560	340
15	185/60R14	/	82	T	/	BSW	8.5	5 1/2J	189	578	300/A/A	475	300
	185/65R14	/	86	T	/	BSW	8.5	5 1/2J	189	596	300/A/A	530	300
	175/65R15	/	84	H	/	BSW	8.5	5J	177	609	300/A/A	500	300
	185/55R15	/	82	H	/	BSW	8.5	6J	194	585	300/A/A	475	300
	185/60R15	/	88	H	XL	BSW	8.5	5 1/2J	189	603	300/A/A	560	340
	185/65R15	/	88	H	/	BSW	8.5	5 1/2J	189	621	300/A/A	560	300
	185/65R15	/	92	T	XL	BSW	8.5	5 1/2J	189	621	300/A/A	630	340
16	195/50R15	/	82	H	/	BSW	8.5	6J	201	577	300/A/A	475	300
	195/55R15	/	85	H	/	BSW	8.5	6J	201	595	300/A/A	515	300
	195/60R15	/	88	H	/	BSW	8.5	6J	201	615	300/A/A	560	300
	195/65R15	/	91	H	/	BSW	8.5	6J	201	635	300/A/A	615	300
	195/55R16	/	87	V	/	BSW	8.5	6J	201	620	300/A/A	545	300
	205/45R16	/	87	V	XL	BSW	8.5	7J	206	590	300/A/A	545	340
	205/55R16	/	94	H	XL	BSW	8.5	6 1/2J	214	632	300/A/A	670	340
17	205/55R16	/	94	V	XL	BSW	8.5	6 1/2J	214	632	300/A/A	670	340
	205/60R16	/	96	V	XL	BSW	8.5	6J	209	652	300/A/A	710	340
	215/55R16	/	97	V	XL	BSW	8.5	7J	226	642	300/A/A	730	340
	215/60R16	/	99	V	XL	BSW	8.5	6 1/2J	221	664	300/A/A	775	340
	225/55R16	/	99	V	XL	BSW	8.5	7J	233	654	300/A/A	775	340
	205/50R17	/	93	V	XL	BSW	8.5	6 1/2J	214	638	300/A/A	650	340
	225/45R17	/	94	V	XL	BSW	8.5	7 1/2J	225	634	300/A/A	670	340
225/50R17	/	98	V	XL	BSW	8.5	7J	233	658	300/A/A	750	340	

1inch=25.4mm | 1kPa=0.142psi | 1KG=2.2 lbs | XL Extra Load | LI Load Index | SS Speed Symbol

A/T

SUV-AT

This all-terrain tire offers great traction on wet and muddy terrain, excellent handling, and outstanding driving comfort on both urban off-road and poorly-paved terrain.

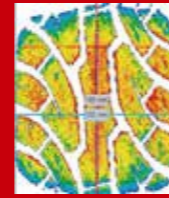


WEAR RESISTANCE CROSS-COUNTRY PUNCTURE RESISTANT RESILIENT



Contour Design

The new contour design improves carcass strength to ensure superior carrying capacity, and at the same time enables uniform contact pressure distribution for even tread wear.



Handling Performance

Reinforced central rib enhances maneuverability and high-speed driving performance.



Specially Designed Tread

The wide all-terrain tread pattern contains large blocks and wide grooves for superior driving capability on both on and off-road conditions.



Off-Road Performance

Square shoulder blocks improve ground contact area and improve grip for greater off-road performance.



RIM	SIZE	PR	LI	SR	XL OR NOT	SIDEWALL	TD (mm)	STANDARD RIM	S.W. (mm)	O.D. (mm)	UTQG	MAX.LOAD (kg)	PRESSURE (kpa)
15	31x10.50R15LT	6PR	109	R	/	OWL	13.0	8 1/2J	268	775	/	1030	350
	LT215/75R15	6PR	100/97	R	/	OWL	12.0	6J	216	703	/	800/730	350
	LT235/75R15	8PR	110/107	R	/	OWL	13.0	6 1/2J	235	733	/	1060/975	450
16	LT215/85R16	10PR	115/112	R	/	OWL	12.5	6J	216	772	/	1215/1120	550
	LT225/70R16	6PR	102/99	R	/	OWL	12.5	6 1/2J	228	722	/	850/775	350
	LT225/75R16	10PR	115/112	R	/	OWL	13.0	6J	223	744	/	1215/1120	550
	LT235/70R16	6PR	104/101	T	/	OWL	12.0	7J	240	736	/	900/825	350
	LT235/85R16	10PR	120/116	R	/	OWL	13.0	6 1/2J	235	806	/	1380/1260	550
	LT245/75R16	10PR	120/116	S	/	OWL	13.0	7J	248	774	/	1380/1260	550
18	LT265/70R16	8PR	117/114	R	/	OWL	13.0	8J	272	778	/	1285/1180	450
	LT265/75R16	10PR	123/120	R	/	OWL	13.0	7 1/2J	267	804	/	1550/1400	550
	LT275/70R18	10PR	125/122	R	/	BSW	12.5	8J	279	843	/	1650/1500	550

1inch=25.4mm | 1kPa=0.142psi | 1KG=2.2 lbs | XL Extra Load | LI Load Index | SS Speed Symbol
SBL: Serrated Black Letter | OWL: Outlined White Letter

A/T02

SUV-AT

Original all-terrain pattern design with excellent grip and outstanding handling performance on both on and off-road applications.



WEAR RESISTANCE CROSS-COUNTRY PUNCTURE RESISTANT RESILIENT



All-Terrain Performance

Equipped with a specialized tread formula this product offers excellent traction, wear resistance and greater handling for all-terrain use.

Longer Life

Tread design offers greater rigidity, reduces noise emissions and promotes even tread wear for a longer tire life.



Off Road Performance

Wide shoulder grooves enhance off-road performance by effectively expelling water, mud, and other debris.

Square shoulder blocks improve ground contact area and improve grip for greater off-road performance.



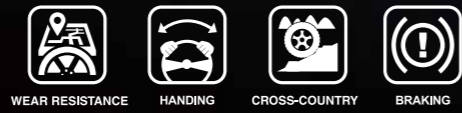
RIM	SIZE	PR	LI	SR	XL OR NOT	SIDEWALL	TD (mm)	STANDARD RIM	S.W. (mm)	O.D. (mm)	UTQG	MAX.LOAD (kg)	PRESSURE (kpa)
15	235/75R15	/	109	S	XL	RWL	9.0	6 1/2J	235	733	700/A/B	1030	340
	255/70R15C	8PR	112/110	S	/	RWL	11.0	7 1/2J	260	739	/	1120/1060	375
16	245/70R16	/	111	S	XL	RWL	9.0	7J	248	750	700/A/B	1090	340
	255/70R16	/	111	S	/	RWL	9.0	7 1/2J	260	764	700/A/B	1090	300
	265/70R16	/	112	S	/	RWL	9.0	8J	272	778	700/A/B	1120	300
17	225/65R17	/	102	T	/	RWL	9.0	6 1/2J	228	724	700/A/B	850	300
	235/65R17	/	104	T	/	RWL	9.0	7J	240	738	700/A/B	900	300
	265/65R17	/	112	T	/	RWL	9.0	8J	272	776	700/A/B	1120	300

1inch=25.4mm | 1kPa=0.142psi | 1KG=2.2 lbs | XL Extra Load | LI Load Index | SS Speed Symbol
SBL: Serrated Black Letter | OWL: Outlined White Letter

H/T01

SUV

Optimized high performance urban on and off-road pattern suitable for pickups and SUVs with excellent endurance and low noise emissions.



On & Off-Road Performance

The ladder-like design within the tread grooves improves tread strength, handling, and effectively reduces stone retention.

Wet Performance

Wide grooves effectively drain water for improved grip and handling on wet roads.

Driving Comfort

The precision spaced tread blocks and grooves effectively reduce tire noise emissions



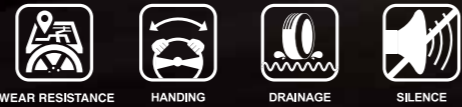
RIM	SIZE	PR	LI	SR	XL OR NOT	SIDEWALL	TD (mm)	STANDARD RIM	S.W. (mm)	O.D. (mm)	UTQG	MAX.LOAD (kg)	PRESSURE (kpa)
14	205/75R14	/	95	S	/	WR	9.5	5 1/2J	203	664	480/A/B	690	300
	215/75R14	/	100	S	/	WR	9.5	6J	216	678	480/A/B	800	300
15	205/70R15	/	96	T	/	WR	9.0	6J	209	669	480/A/B	710	300
	205/75R15	/	97	T	/	WR	9.5	5 1/2J	203	689	480/A/B	730	300
	215/70R15	/	98	T	/	WR	9.0	6 1/2J	221	683	480/A/B	750	300
	215/75R15	/	100	S	/	BSW	9.2	6J	216	703	480/A/B	800	300
	215/75R15	/	100	T	/	BSW	9.2	6J	216	703	480/A/B	800	300
	215/75R15	/	100	T	/	WR	9.2	6J	216	703	480/A/B	800	300
	225/70R15	/	100	T	/	BSW	9.0	6 1/2J	228	697	480/A/B	800	300
	225/70R15	/	100	T	/	WR	9.0	6 1/2J	228	697	480/A/B	800	300
16	225/75R15	/	102	T	/	BSW	9.2	6J	223	719	480/A/B	850	300
	225/75R15	/	102	T	/	WR	9.2	6J	223	719	480/A/B	850	300
	235/75R15	/	105	S	/	BSW	9.5	6 1/2J	235	733	480/A/B	925	300
	235/75R15	/	105	T	/	BSW	9.5	6 1/2J	235	733	480/A/B	925	300
	235/75R15	/	105	T	/	WR	9.5	6 1/2J	235	733	480/A/B	925	300
	215/65R16	/	98	T	/	BSW	9.0	6 1/2J	221	686	480/A/B	750	300
	215/65R16	/	98	H	/	BSW	9.0	6 1/2J	221	686	480/A/B	750	300
	215/70R16	/	100	T	/	BSW	9.0	6 1/2J	221	708	480/A/B	800	300
	215/70R16	/	100	H	/	BSW	9.0	6 1/2J	221	708	480/A/B	800	300
	225/70R16	/	103	T	/	BSW	9.0	6 1/2J	228	722	480/A/B	875	300
17	235/70R16	/	106	T	/	BSW	9.0	7J	240	736	480/A/B	950	300
	245/70R16	/	111	T	XL	BSW	9.0	7J	248	750	480/A/B	1090	340
	255/70R16	/	111	T	/	BSW	9.0	7 1/2J	260	764	480/A/B	1090	300
	265/70R16	/	112	S	/	BSW	9.0	8J	272	778	480/A/B	1120	300
	215/60R17	/	96	H	/	BSW	9.0	6 1/2J	221	690	480/A/A	710	300
	225/65R17	/	102	S	/	BSW	9.2	6 1/2J	228	724	480/A/B	850	300
	225/65R17	/	102	H	/	BSW	9.2	6 1/2J	228	724	480/A/B	850	300
	225/65R17	/	106	H	XL	BSW	9.2	6 1/2J	228	724	480/A/B	950	340
	235/65R17	/	108	V	XL	BSW	9.0	7J	240	738	480/A/B	1000	340
	235/65R17	/	104	V	/	BSW	9.0	7J	240	738	480/A/B	900	300
18	245/65R17	/	111	T	XL	BSW	9.0	7J	248	750	480/A/B	1090	340
	245/65R17	/	107	S	/	BSW	9.0	7J	248	750	480/A/B	975	300
	265/65R17	/	112	S	/	BSW	9.0	8J	272	776	480/A/B	1120	300
	265/65R17	/	112	T	/	BSW	9.0	8J	272	776	480/A/B	1120	300
	265/70R17	/	115	T	/	BSW	9.0	8J	272	804	480/A/B	1215	300
	235/60R18	/	107	H	XL	BSW	9.0	7J	240	739	480/A/A	975	340
	235/65R18	/	106	H	/	BSW	9.0	7J	240	763	480/A/B	950	300
	265/65R18	/	114	H	/	BSW	9.0	8J	272	801	480/A/B	1180	300

1inch=25.4mm | 1kPa=0.142psi | 1KG=2.2 lbs | XL Extra Load | LI Load Index | SS Speed Symbol

H/T02

SUV

Pickups and SUV tire offering excellent endurance and handling.



WEAR RESISTANCE HANDING DRAINAGE SILENCE



Wet Performance

The tread pattern grooves built into the crown are designed to effectively drain water and offer great traction on wet roads to enhance overall safety.

Longer Life

The tread is composed of a special formula made specifically to increase wear resistance.

Driving Comfort

A varying pitch tread block design provides a comfortable and quiet ride.

Summer Performance

The asymmetric tread pattern improves handling and braking on wet and dry roads.



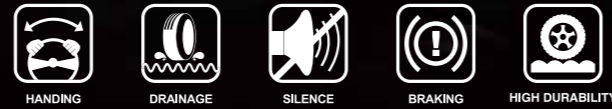
RIM	SIZE	PR	LI	SR	XL OR NOT	SIDEWALL	TD (mm)	STANDARD RIM	S.W. (mm)	O.D. (mm)	UTQG	MAX.LOAD (kg)	PRESSURE (kpa)
15	255/70R15	/	108	T	/	BSW	9.0	7 1/2J	260	739	420/A/B	1000	300
	265/70R15	/	112	T	/	BSW	9.0	8J	272	753	420/A/B	1120	300
16	275/70R16	/	114	H	/	BSW	8.8	8J	279	792	420/A/B	1180	300
17	225/60R17	/	99	H	/	BSW	9.0	6 1/2J	228	702	420/A/A	775	300
	235/60R17	/	102	H	/	BSW	9.0	7J	240	714	420/A/A	850	300
	235/65R17	/	104	H	/	BSW	9.0	7J	240	738	420/A/B	900	300
	245/70R17	/	110	T	/	BSW	9.0	7J	248	776	420/A/B	1060	300
	255/60R17	/	106	H	/	BSW	8.8	7 1/2J	260	738	420/A/B	950	300
	255/65R17	/	110	H	/	BSW	9.0	7 1/2J	260	764	420/A/B	1060	300
	275/65R17	/	115	H	/	BSW	9.0	8J	279	790	420/A/B	1215	300
	285/65R17	/	116	H	/	BSW	9.0	8 1/2J	292	802	420/A/B	1250	300
18	225/60R18	/	100	H	/	BSW	8.8	6 1/2J	228	727	420/A/A	800	300
	235/55R18	/	104	V	XL	BSW	8.0	7 1/2J	245	715	420/A/A	900	340
	235/60R18	/	107	V	XL	BSW	9.0	7J	240	739	420/A/A	975	340
	245/60R18	/	105	H	/	BSW	9.0	7J	248	751	420/A/B	925	300
	255/55R18	/	105	V	/	BSW	8.6	8J	265	737	420/A/A	925	300
	255/70R18	/	116	H	XL	BSW	9.0	7 1/2J	260	815	420/A/B	1250	340
	255/70R18	/	116	T	XL	BSW	9.0	7 1/2J	260	815	420/A/B	1250	340
	265/60R18	/	110	H	/	BSW	9.0	8J	272	775	420/A/B	1060	300
	265/70R18	/	116	T	/	BSW	9.0	8J	272	829	420/A/B	1250	300
	275/65R18	/	116	H	XL	BSW	9.0	8J	279	815	420/A/B	1250	340
275/65R18	/	116	T	XL	BSW	9.0	8J	279	815	420/A/B	1250	340	
285/60R18	/	116	V	/	BSW	9.0	8 1/2J	292	799	420/A/B	1250	300	
285/60R18	/	116	H	/	BSW	9.0	8 1/2J	292	799	420/A/B	1250	300	
19	235/55R19	/	101	V	/	BSW	8.0	7 1/2J	245	741	420/A/A	825	300
	235/55R19	/	105	V	XL	BSW	8.0	7 1/2J	245	741	420/A/A	925	340
	255/50R19	/	103	V	/	BSW	8.6	8J	265	739	420/A/A	875	300
20	225/35R20	/	90	W	XL	BSW	8.6	8J	230	666	420/A/A	600	340
	225/35R20	/	93	W	XL	BSW	8.6	8J	230	666	420/A/A	650	340
	245/45R20	/	103	W	XL	BSW	8.6	8J	243	728	480/A/A	875	340
	245/50R20	/	105	V	XL	BSW	8.6	7 1/2J	253	754	420/A/A	925	340
	255/50R20	/	109	V	XL	BSW	8.6	8J	265	764	420/A/A	1030	340
	255/55R20	/	110	V	XL	BSW	8.6	8J	265	788	420/A/A	1060	340
	275/55R20	/	113	H	/	BSW	8.0	8 1/2J	284	810	420/A/A	1150	300
275/60R20	/	115	S	/	BSW	8.8	8J	279	838	420/A/B	1215	300	
21	275/50R21	/	113	W	XL	BSW	8.6	8 1/2J	284	809	420/A/A	1150	340
22	275/40ZR22	/	107	Y	XL	BSW	8.0	9 1/2J	278	779	420/A/A	975	340

1inch=25.4mm | 1kPa=0.142psi | 1KG=2.2 lbs | XL Extra Load | LI Load Index | SS Speed Symbol

SU01

SUV

Specially designed UHP SUV tire.



Summer Performance

The asymmetric tread pattern improves handling and braking on wet and dry roads.



Safety

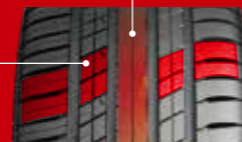
The center rib design improves traction for greater acceleration and braking responsiveness, overall increasing safety.

Durability

The tread compound is designed specifically to improve wear resistance.

Driving Comfort

Variable tread block pitch and sipe design reduce tire vibrations offering a more comfortable driving experience.



RIM	SIZE	PR	LI	SR	XL OR NOT	SIDEWALL	TD (mm)	STANDARD RIM	SW (mm)	OD (mm)	UTQG	MAX.LOAD (kg)	PRESSURE (kpa)	MARK
17	235/55R17	/	103	W	XL	BSW	8.0	7 1/2J	245	690	280/AA/A	875	340	//
18	215/50R18	/	92	W	/	BSW	8.0	7J	226	673	280/AA/A	630	300	/
	225/50R18	/	99	Y	XL	BSW	8.0	7J	233	683	280/AA/A	775	340	/
	225/55R18	/	102	W	XL	BSW	8.0	7J	233	705	280/AA/A	850	340	/
	225/55R18	/	102	V	XL	BSW	8.0	7J	233	705	280/AA/A	850	340	/
	225/60R18	/	100	V	/	BSW	8.0	6 1/2J	228	727	280/AA/A	800	300	/
	235/50R18	/	97	V	/	BSW	8.0	7 1/2J	245	693	280/AA/A	730	300	/
	235/55R18	/	104	W	XL	BSW	8.0	7 1/2J	245	715	280/AA/A	900	340	/
	235/60R18	/	107	W	XL	BSW	8.0	7J	240	739	280/AA/A	975	340	/
	245/60R18	/	105	V	/	BSW	8.0	7J	248	751	280/AA/B	925	300	/
	255/55R18	/	109	Y	XL	BSW	8.0	8J	265	737	280/AA/A	1030	340	/
255/60R18	/	112	V	XL	BSW	8.0	7 1/2J	260	763	280/AA/B	1120	340	/	
265/60R18	/	110	V	/	BSW	8.0	8J	272	775	280/AA/B	1060	300	/	
275/40R18	/	103	W	XL	BSW	8.0	9 1/2J	278	677	280/AA/A	875	340	/	
19	225/45R19	/	96	W	XL	BSW	8.0	7 1/2J	225	685	280/AA/A	710	340	/
	225/55R19	/	99	W	/	BSW	8.0	7J	233	731	280/AA/A	775	300	/
	235/55R19	/	101	W	/	BSW	8.0	7 1/2J	245	741	280/AA/A	825	300	/
	245/50R19	/	105	W	XL	BSW	8.0	7 1/2J	253	729	280/AA/A	925	340	/
	245/55R19	/	103	V	/	BSW	8.0	7 1/2J	253	753	280/AA/A	875	300	/
	255/55R19	/	111	Y	XL	BSW	8.0	8J	265	763	280/AA/A	1090	340	/
	265/50R19	/	110	Y	XL	BSW	8.0	8 1/2J	277	749	280/AA/A	1060	340	/
20	235/50R20	/	104	Y	XL	BSW	8.0	7 1/2J	245	744	280/AA/A	900	340	/
	255/40R20	/	101	Y	XL	BSW	8.0	9J	260	712	280/AA/A	825	340	/
	255/45R20	/	105	Y	XL	BSW	8.0	8 1/2J	255	738	280/AA/A	925	340	/
	255/50R20	/	109	Y	XL	BSW	8.0	8J	265	764	280/AA/A	1030	340	/
	255/55R20	/	110	Y	XL	BSW	8.0	8J	265	788	280/AA/A	1060	340	/
	265/50R20	/	111	Y	XL	BSW	8.0	8 1/2J	277	774	280/AA/A	1090	340	/
	275/35R20	/	102	W	XL	BSW	8.0	9 1/2J	278	700	280/AA/A	850	340	/
	275/55R20	/	117	W	XL	BSW	8.0	8 1/2J	284	810	280/AA/A	1285	340	/
	275/60R20	/	119	V	XL	BSW	8.0	8J	279	838	280/AA/B	1360	340	/
	285/40R20	/	104	Y	/	BSW	8.0	10J	290	736	280/AA/A	900	300	/
285/50R20	/	116	W	XL	BSW	8.0	9J	297	794	280/AA/A	1250	340	/	
295/35R20	/	105	Y	XL	BSW	8.0	10 1/2J	301	714	280/AA/A	925	340	/	
21	245/45R21	/	104	Y	XL	BSW	8.0	8J	243	753	280/AA/A	900	340	/
	255/40R21	/	102	Y	XL	BSW	8.0	9J	260	737	280/AA/A	850	340	/
	265/40R21	/	105	Y	XL	BSW	8.0	9 1/2J	271	745	280/AA/A	925	340	/
	265/45R21	/	108	Y	XL	BSW	8.0	9J	266	771	280/AA/A	1000	340	/
	275/40R21	/	107	Y	XL	BSW	8.0	9 1/2J	278	753	280/AA/A	975	340	/
	275/45R21	/	110	Y	XL	BSW	8.0	9J	273	781	280/AA/A	1060	340	/
	285/40R21	/	109	Y	XL	BSW	8.0	10J	290	761	280/AA/A	1030	340	/
315/35R21	/	111	Y	XL	BSW	8.0	11J	320	753	280/AA/A	1090	340	/	
22	265/35R22	/	102	W	XL	BSW	8.0	9 1/2J	271	745	280/AA/A	850	340	/
	265/35R22	/	102	Y	XL	BSW	8.0	9 1/2J	271	745	280/AA/A	850	340	/
	285/35R22	/	106	Y	XL	BSW	8.0	10J	290	759	280/AA/A	950	340	/
	285/45R22	/	114	W	XL	BSW	8.0	9 1/2J	285	815	280/AA/A	1180	340	/
	305/40R22	/	114	W	XL	BSW	8.0	11J	313	803	280/AA/A	1180	340	/
305/45R22	/	118	W	XL	BSW	8.0	10J	303	833	280/AA/A	1320	340	/	

1inch=25.4mm | 1kPa=0.142psi | 1KG=2.2 lbs | XL Extra Load | LI Load Index | SS Speed Symbol

M/T

SUV

Specially designed for cross-country enthusiasts.



TRAVERSABLE CROSS-COUNTRY HIGH DURABILITY PUNCTURE RESISTANT RESILIENT



Toughness

The shield design which extends onto the sidewall protects from abrasions and increases traction on muddy roads.



Off-Road Grip

Deepend grooves effectively discharges mud and allows for better grip on both muddy and rocky roads.



Off-Road Handling

Large shoulder blocks greatly enhance handling on muddy and rocky roads.

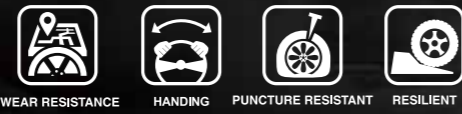
RIM	SIZE	PR	LI	SR	XL OR NOT	SIDEWALL	TD (mm)	STANDARD RIM	S.W. (mm)	O.D. (mm)	UTQG	MAX.LOAD (kg)	PRESSURE (kpa)
15	30×9.50R15LT	6PR	104	Q	/	OWL	15.3	7 1/2J	240	756	/	900	350
	31×10.50R15LT	6PR	109	Q	/	OWL	15.3	8 1/2J	268	781	/	1030	350
	33×12.50R15LT	6PR	108	Q	/	OWL	15.3	10J	318	832	/	1000	250
	35×12.50R15LT	6PR	113	Q	/	OWL	15.3	10J	318	883	/	1150	250
16	LT235/75R15	6PR	104/101	Q	/	OWL	15.3	6 1/2J	235	739	/	900/825	350
	LT235/85R16	10PR	120/116	Q	/	OWL	15.3	6 1/2J	235	812	/	1380/1260	550
	LT245/75R16	10PR	120/116	Q	/	OWL	15.3	7J	248	774	/	1380/1260	550
	LT265/75R16	8PR	119/116	Q	/	OWL	15.3	7 1/2J	267	810	/	1360/1250	450
17	LT265/75R16	10PR	123/120	Q	/	OWL	15.3	7 1/2J	267	810	/	1550/1400	550
	33×12.50R17LT	8PR	114	Q	/	OWL	16.3	10J	318	832	/	1180	350
	35×12.50R17LT	10PR	121	Q	/	OWL	16.3	10J	318	883	/	1450	450
	LT265/65R17	10PR	120/117	Q	/	OWL	15.3	8J	272	776	/	1400/1285	550
18	LT265/70R17	10PR	121/118	Q	/	OWL	15.5	8J	272	810	/	1450/1320	550
	LT285/70R17	10PR	121/118	Q	/	OWL	15.5	8 1/2J	292	838	/	1450/1320	550
	33×12.50R18LT	10PR	118	K	/	BSW	16.3	10J	318	832	/	1320	450
20	35×12.50R18LT	10PR	123	Q	/	BSW	16.7	10J	318	883	/	1550	450
	33×12.50R20LT	10PR	114	Q	/	BSW	16.3	10J	318	832	/	1180	450
	35×12.50R20LT	10PR	121	Q	/	BSW	16.3	10J	318	883	/	1450	450
	LT305/55R20	10PR	121/118	Q	/	BSW	16.3	9 1/2J	316	850	/	1450/1320	450

1inch=25.4mm | 1kPa=0.142psi | 1KG=2.2 lbs | XL Extra Load | LI Load Index | SS Speed Symbol
OWL Outline White Letter

C01

LTC

Optimized for performance on wet and dry road conditions, the C01 offers improved wear resistance for a longer tread life.



RIM	SIZE	PR	LI	SR	XL OR NOT	SIDEWALL	TD (mm)	STANDARD RIM	S.W. (mm)	O.D. (mm)	UTQG	MAX.LOAD (kg)	PRESSURE (kpa)
15	6.50R15LT	10PR	106/101	N	/	BSW	10.0	5.50F	185	730	/	950/825	560
	7.00R15LT	10PR	109/105	N	/	BSW	10.0	5.50F	200	750	/	1030/925	560
	7.00R15LT	10PR	109/105	L	/	BSW	10.0	5.50F	200	750	/	1030/925	560
16	6.50R16LT	10PR	107/102	N	/	BSW	10.5	5.50F	185	750	/	975/850	560
	7.00R16LT	12PR	115/110	N	/	BSW	10.5	5.50F	200	775	/	1215/1060	670

1inch=25.4mm | 1kPa=0.142psi | 1KG=2.2 lbs | XL Extra Load | LI Load Index | SS Speed Symbol



Greater Serviceability

The s-shaped grooves and ribs efficiently drain water and reduce stone retention.



Longer Life

Optimized tread pattern design improves ground contact pressure to promote even tread wear.



C02

LTC



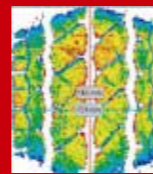
Summer Performance

Tread pattern is designed for excellent performance and driving comfort on both wet and dry roads.



Carrying Capacity

A new profile design and strengthened carcass improve the tire's overall load bearing capabilities.



Overall Performance

Wide and deep grooves increase wear resistance, efficiently drain water, and provide greater handling and driving stability.



RIM	SIZE	PR	LI	SR	XL OR NOT	SIDEWALL	TD (mm)	STANDARD RIM	S.W. (mm)	O.D. (mm)	UTQG	MAX.LOAD (kg)	PRESSURE (kpa)
12	145R12C	6PR	80/78	P	/	BSW	8.0	4.00B	145	537	/	450/425	350
	145R12C	8PR	86/84	P	/	BSW	8.0	4.00B	145	537	/	530/500	450
	155R12C	8PR	88/86	P	/	BSW	8.0	4.50B	157	550	/	560/530	450
13	155R13C	6PR	85/83	Q	/	BSW	8.0	4.50B	157	578	/	515/487	350
	165/70R13C	6PR	88/86	Q	/	BSW	8.0	5.00B	170	562	/	560/530	375
	165R13C	8PR	94/93	S	/	BSW	7.6	4.50B	167	596	/	670/650	450
14	175R13C	8PR	97/95	S	/	BSW	8.0	5.00B	177	610	/	730/690	450
	175/65R14C	6PR	90/88	T	/	BSW	8.0	5J	177	584	/	600/560	375
	175/70R14C	6PR	95/93	Q	/	BSW	8.0	5J	177	602	/	690/650	375
15	175R14C	8PR	99/98	Q	/	BSW	9.0	5J	178	634	/	775/750	450
	185R14C	8PR	102/100	Q	/	BSW	9.0	5 1/2J	188	650	/	850/800	450
	195R14C	8PR	106/104	Q	/	BSW	9.0	5 1/2J	198	666	/	950/900	450
	195R14C	8PR	106/104	Q	/	WR	9.0	5 1/2J	198	666	/	950/900	450
	205/75R14C	8PR	109/107	Q	/	WR	9.0	5 1/2J	203	664	/	1030/975	475
	205R14C	8PR	109/107	R	/	BSW	9.0	6J	208	686	/	1030/975	450
	205R14C	10PR	112/110	R	/	BSW	9.0	6J	208	686	/	1120/1060	525
	185R15C	8PR	103/102	R	/	BSW	9.4	5 1/2J	188	674	/	875/850	450
	195/70R15C	10PR	104/102	R	/	BSW	10.0	6J	201	655	/	900/850	450
	195/70R15C	8PR	104/102	R	/	BSW	10.0	6J	201	655	/	900/850	450
16	195R15C	8PR	106/104	R	/	BSW	9.0	5 1/2J	198	690	/	950/900	450
	195R15C	8PR	106/104	R	/	WR	9.0	5 1/2J	198	690	/	950/900	450
	205/65R15C	6PR	102/100	R	/	BSW	9.0	6J	209	647	/	850/800	375
	205/70R15C	8PR	106/104	R	/	BSW	9.0	6J	209	669	/	950/900	450
	215/70R15C	8PR	109/107	S	/	BSW	10.0	6 1/2J	221	683	/	1030/975	450
	215R15C	8PR	109/107	R	/	WR	10.0	6J	218	725	/	1030/975	450
	215/65R15C	6PR	104/102	T	/	BSW	9.5	6 1/2J	221	661	/	900/850	375
	225/70R15C	8PR	106/103	R	/	BSW	9.0	6 1/2J	228	697	/	950/875	450
	225/70R15C	8PR	112/110	R	/	BSW	9.0	6 1/2J	228	697	/	1120/1060	450
	175R16C	8PR	101/99	R	/	BSW	9.0	5J	178	684	/	825/775	450
	185/75R16C	8PR	104/102	R	/	BSW	9.0	5J	184	684	/	900/850	475
	195/60R16C	6PR	99/97	T	/	BSW	9.0	6J	201	640	/	775/730	375
195/65R16C	8PR	104/102	R	/	BSW	9.4	6J	201	660	/	900/850	475	
195/75R16C	8PR	107/105	R	/	BSW	10.0	5 1/2J	196	698	/	975/925	475	
195/75R16C	10PR	110/108	R	/	BSW	10.0	5 1/2J	196	698	/	1060/1000	525	
205/65R16C	8PR	107/105	R	/	BSW	9.0	6J	209	672	/	975/925	475	
205/75R16C	8PR	110/108	R	/	BSW	9.0	5 1/2J	203	714	/	1060/1000	475	
205/75R16C	10PR	113/111	R	/	BSW	9.0	5 1/2J	203	714	/	1150/1090	525	
205R16C	8PR	110/108	R	/	BSW	9.0	6J	208	736	/	1060/1000	450	
215/60R16C	6PR	103/101	T	/	BSW	9.0	6 1/2J	221	664	/	875/825	375	
215/65R16C	8PR	109/107	R	/	BSW	9.0	6 1/2J	221	686	/	1030/975	475	
215/70R16C	6PR	108/106	Q	/	BSW	9.0	6 1/2J	221	708	/	1000/950	375	
215/75R16C	10PR	116/114	R	/	BSW	10.5	6J	216	728	/	1250/1180	525	
225/65R16C	8PR	112/110	R	/	BSW	9.0	6 1/2J	228	698	/	1120/1060	475	
225/75R16C	10PR	121/120	R	/	BSW	9.0	6J	223	744	/	1450/1400	575	
235/65R16C	8PR	115/113	R	/	BSW	9.0	7J	240	712	/	1215/1150	475	
235/65R16C	10PR	121/119	R	/	BSW	9.0	7J	240	712	/	1450/1360	575	
285/65R16C	10PR	128	R	/	BSW	9.0	8 1/2J	292	776	/	1800	525	
17	215/60R17C	8PR	109/107	T	/	BSW	9.5	6 1/2J	221	690	/	1030/975	475
	225/55R17C	8PR	109/107	H	/	BSW	9.5	7 J	233	680	/	1030/975	475
	225/70R17C	6PR	112/110	R	/	BSW	9.0	6 1/2J	228	748	/	1120/1060	375

1inch=25.4mm | 1kPa=0.142psi | 1KG=2.2 lbs | XL Extra Load | LI Load Index | SS Speed Symbol
BSW Black Sidewall

WH01

WINTER HP STUDLESS

Designed to offer excellent performance in winter weather conditions.



Fuel Efficiency

The special tread compound reduces rolling resistance for better fuel efficiency.

Winter Performance

A reinforced center rib improves handling and high speed performance while the multiple sipes enhance grip and braking capabilities on snow and ice.

Winter Safety

Zigzagged grooves improve the tire's self-cleaning capabilities for a safer drive on snow and ice.



RIM	SIZE	PR	LI	SR	XL OR NOT	SIDEWALL	TD (mm)	STANDARD RIM	S.W. (mm)	O.D. (mm)	UTQG	MAX.LOAD (kg)	PRESSURE (kpa)
13	155/65R13	/	73	T	/	BSW	8.5	4.50B	157	532	/	365	300
	155/70R13	/	75	T	/	BSW	8.5	4.50B	157	548	/	387	300
	165/70R13	/	79	T	/	BSW	8.5	5.00B	170	562	/	437	300
	165/70R13	/	83	T	XL	BSW	8.5	5.00B	170	562	/	487	340
	175/70R13	/	82	T	/	BSW	8.5	5.00B	177	576	/	475	300
14	165/65R14	/	79	T	/	BSW	8.5	5J	170	570	/	437	300
	165/70R14	/	81	T	/	BSW	8.5	5J	170	588	/	462	300
	165/70R14	/	85	T	XL	BSW	8.5	5J	170	588	/	515	340
	175/65R14	/	82	H	/	BSW	8.7	5J	177	584	/	475	300
	175/65R14	/	86	T	XL	BSW	8.7	5J	177	584	/	530	340
	175/70R14	/	84	T	/	BSW	8.5	5J	177	602	/	500	300
	175/70R14	/	88	T	XL	BSW	8.2	5J	177	602	/	560	340
	185/60R14	/	82	T	/	BSW	8.5	5 1/2J	189	578	/	475	300
	185/60R14	/	82	H	/	BSW	8.5	5 1/2J	189	578	/	475	300
	185/65R14	/	86	T	/	BSW	8.7	5 1/2J	189	596	/	530	300
	185/65R14	/	86	H	/	BSW	8.7	5 1/2J	189	596	/	530	300
	185/70R14	/	92	T	XL	BSW	8.7	5 1/2J	189	616	/	630	340
	185/70R14	/	88	H	/	BSW	8.7	5 1/2J	189	616	/	560	300
	195/70R14	/	91	H	/	BSW	8.7	6J	201	630	/	615	300
	195/70R14	/	95	T	XL	BSW	8.7	6J	201	630	/	690	340
205/70R14	/	98	T	XL	BSW	8.7	6J	209	644	/	750	340	
205/70R14	/	98	H	XL	BSW	8.7	6J	209	644	/	750	340	
15	175/65R15	/	84	H	/	BSW	8.7	5J	177	609	/	500	300
	175/65R15	/	88	H	XL	BSW	8.7	5J	177	609	/	560	340
	185/55R15	/	86	H	XL	BSW	8.5	6J	194	585	/	530	340
	185/60R15	/	88	H	XL	BSW	8.5	5 1/2J	189	603	/	560	340
	185/60R15	/	88	T	XL	BSW	8.5	5 1/2J	189	603	/	560	340
	185/60R15	/	84	H	/	BSW	8.5	5 1/2J	189	603	/	500	300
	185/65R15	/	88	T	/	BSW	8.7	5 1/2J	189	621	/	560	300
	185/65R15	/	92	T	XL	BSW	8.7	5 1/2J	189	621	/	630	340
	185/65R15	/	88	H	/	BSW	8.7	5 1/2J	189	621	/	560	300
	185/65R15	/	92	H	XL	BSW	8.7	5 1/2J	189	621	/	630	340
	195/50R15	/	86	H	XL	BSW	8.5	6J	201	577	/	530	340
	195/50R15	/	86	V	XL	BSW	8.5	6J	201	577	/	530	340
	195/55R15	/	85	H	/	BSW	8.5	6J	201	595	/	515	300
	195/60R15	/	88	T	/	BSW	8.5	6J	201	615	/	560	300
	195/60R15	/	88	H	/	BSW	8.5	6J	201	615	/	560	300
	195/65R15	/	91	T	/	BSW	8.7	6J	201	635	/	615	300
	195/65R15	/	95	T	XL	BSW	8.7	6J	201	635	/	690	340
	195/65R15	/	91	H	/	BSW	8.7	6J	201	635	/	615	300
	205/60R15	/	91	H	/	BSW	8.7	6J	209	627	/	615	300
	205/65R15	/	94	H	/	BSW	8.5	6J	209	647	/	670	300
215/65R15	/	96	H	/	BSW	8.5	6 1/2J	221	661	/	710	300	
16	195/45R16	/	84	H	XL	BSW	8.5	6 1/2J	195	582	/	500	340
	195/55R16	/	87	H	/	BSW	8.5	6J	201	620	/	545	300
	195/55R16	/	87	V	/	BSW	8.5	6J	201	620	/	545	300
	205/45R16	/	87	H	XL	BSW	8.7	7J	206	590	/	545	340
	205/45R16	/	87	V	XL	BSW	8.7	7J	206	590	/	545	340
	205/50R16	/	87	H	/	BSW	8.7	6 1/2J	214	612	/	545	300
	205/55R16	/	91	H	/	BSW	8.5	6 1/2J	214	632	/	615	300
	205/55R16	/	94	H	XL	BSW	8.5	6 1/2J	214	632	/	670	340
	205/55R16	/	94	V	XL	BSW	8.5	6 1/2J	214	632	/	670	340
	205/60R16	/	96	H	XL	BSW	8.7	6J	209	652	/	710	340
	205/65R16	/	95	H	/	BSW	8.8	6J	209	672	/	690	300
	215/55R16	/	97	H	XL	BSW	8.7	7J	226	642	/	730	340
	215/55R16	/	97	V	XL	BSW	8.7	7J	226	642	/	730	340
	215/60R16	/	99	H	XL	BSW	8.7	6 1/2J	221	664	/	775	340
	215/65R16	/	98	H	/	BSW	8.8	6 1/2J	221	686	/	750	300
225/55R16	/	99	H	XL	BSW	8.7	7J	233	654	/	775	340	
225/60R16	/	98	H	/	BSW	8.7	6 1/2J	228	676	/	750	300	
245/70R16	/	107	T	/	BSW	8.7	7J	248	750	/	975	300	

1inch=25.4mm | 1kPa=0.142psi | 1KG=2.2 lbs | XL Extra Load | LI Load Index | SS Speed Symbol

WH03

WINTER HP STUDLESS

The WH03 is designed to greatly improve traction, handling, and driving stability for greater overall safety when driving in winter.



SKID RESISTANT

SNOW TRACTION

LOW TEMPERATURE

HANDLING

PRESENTABLE



Winter Grip

Large tread blocks and small sipes work together to increase overall grip for more efficient traction and braking on ice.



Winter Safety

The 90 degree angle shoulder improves anti-skid performance for overall increased safety on ice and snow.

Driving Stability

The j-like shoulder design improves grip and driving stability.



RIM	SIZE	PR	LI	SR	XL OR NOT	SIDEWALL	TD (mm)	STANDARD RIM	S.W. (mm)	O.D. (mm)	UTQG	MAX.LOAD (kg)	PRESSURE (kpa)
13	155/65R13	/	73	T	/	BSW	8.5	4.50B	157	532	/	365	300
	155/70R13	/	75	T	/	BSW	8.5	4.50B	157	548	/	387	300
	165/70R13	/	83	T	XL	BSW	8.5	5.00B	170	562	/	487	340
	175/70R13	/	82	T	/	BSW	8.5	5.00B	177	576	/	475	300
14	165/70R14	/	85	T	XL	BSW	8.5	5J	170	588	/	515	340
	175/65R14	/	82	H	/	BSW	8.5	5J	177	584	/	475	300
	175/70R14	/	88	T	XL	BSW	8.5	5J	177	602	/	560	340
	185/60R14	/	82	T	/	BSW	8.5	5 1/2J	189	578	/	475	300
	185/65R14	/	86	T	/	BSW	8.5	5 1/2J	189	596	/	530	300
	185/70R14	/	88	H	/	BSW	8.5	5 1/2J	189	616	/	560	300
	195/60R14	/	86	T	/	BSW	8.5	6J	201	590	/	530	300
	195/65R14	/	89	T	/	BSW	8.5	6J	201	610	/	580	300
	195/70R14	/	91	H	/	BSW	8.5	6J	201	630	/	615	300
	205/70R14	/	98	H	XL	BSW	8.5	6J	209	644	/	750	340
15	185/55R15	/	86	H	XL	BSW	8.5	6J	194	585	/	530	340
	185/60R15	/	88	H	XL	BSW	8.5	5 1/2J	189	603	/	560	340
	185/65R15	/	88	T	/	BSW	8.5	5 1/2J	189	621	/	560	300
	195/55R15	/	85	H	/	BSW	8.5	6J	201	595	/	515	300
	195/60R15	/	88	T	/	BSW	8.5	6J	201	615	/	560	300
	195/65R15	/	91	T	/	BSW	8.5	6J	201	635	/	615	300
	205/65R15	/	94	H	/	BSW	8.5	6J	209	647	/	670	300
	205/70R15	/	96	T	/	BSW	8.5	6J	209	669	/	710	300
	215/65R15	/	96	H	/	BSW	8.5	6 1/2J	221	661	/	710	300
	215/70R15	/	98	T	/	BSW	8.5	6 1/2J	221	683	/	750	300
16	215/75R15	/	100	S	/	BSW	10.5	6J	216	703	/	800	300
	235/75R15	/	109	S	XL	BSW	10.5	6 1/2J	235	733	/	1030	340
	205/55R16	/	91	H	/	BSW	8.5	6 1/2J	214	632	/	615	300
	205/60R16	/	96	H	XL	BSW	8.5	6J	209	652	/	710	340
	215/60R16	/	99	H	XL	BSW	8.5	6 1/2J	221	664	/	775	340
	215/65R16	/	98	H	/	BSW	8.5	6 1/2J	221	686	/	750	300
17	215/55R17	/	94	H	/	BSW	8.5	7J	226	668	/	670	300
	235/45R17	/	94	H	/	BSW	8.5	8J	236	644	/	670	300
18	235/60R18	/	107	T	XL	BSW	10.5	7J	240	739	/	975	340

1inch=25.4mm | 1kPa=0.142psi | 1KG=2.2 lbs | XL Extra Load | LI Load Index | SS Speed Symbol

WU01

WINTER UHP STUDLESS

WU01 is equipped with a special tread compound and wide tread that offers excellent performance on ice and snow.



Winter Safety

The tread is able to maintain softness in low temperatures to ensure passenger safety while serrated sipes improve tire grip on ice and snow.

Winter Performance

The three main pattern grooves provide great handling in extreme winter weather conditions by draining snow and ice.



Winter Grip

The serrated design on the sides of the main grooves help the tire better grip on ice and snow.



RIM	SIZE	PR	LI	SR	XL OR NOT	SIDEWALL	TD (mm)	STANDARD RIM	S.W. (mm)	O.D. (mm)	UTQG	MAX.LOAD (kg)	PRESSURE (kpa)
14	185/60R14	/	82	T	/	BSW	9.2	5 1/2J	189	578	/	475	300
15	195/65R15	/	95	T	XL	BSW	9.2	6J	201	635	/	690	340
	205/65R15	/	94	H	/	BSW	9.2	6J	209	647	/	670	300
16	205/55R16	/	91	H	/	BSW	9.5	6 1/2J	214	632	/	615	300
	215/55R16	/	97	H	XL	BSW	9.5	7J	226	642	/	730	340
	215/60R16	/	99	H	XL	BSW	9.5	6 1/2J	221	664	/	775	340
	215/65R16	/	98	H	/	BSW	9.5	6 1/2J	221	686	/	750	300
	225/55R16	/	99	H	XL	BSW	9.5	7J	233	654	/	775	340
	225/60R16	/	98	H	/	BSW	9.5	6 1/2J	228	676	/	750	300
17	205/45R17	/	88	H	XL	BSW	9.5	7J	206	616	/	560	340
	205/45R17	/	88	V	XL	BSW	9.5	7J	206	616	/	560	340
	205/50R17	/	89	H	/	BSW	9.5	6 1/2J	214	638	/	580	300
	205/50R17	/	89	V	/	BSW	9.5	6 1/2J	214	638	/	580	300
	205/55R17	/	95	H	XL	BSW	9.5	6 1/2J	214	658	/	690	340
	215/45R17	/	87	H	/	BSW	9.5	7J	213	626	/	545	300
	215/45R17	/	87	V	/	BSW	9.5	7J	213	626	/	545	300
	215/55R17	/	94	H	/	BSW	9.5	7J	226	668	/	670	300
	215/55R17	/	94	V	/	BSW	9.5	7J	226	668	/	670	300
	225/45R17	/	91	H	/	BSW	9.5	7 1/2J	225	634	/	615	300
	225/45R17	/	91	V	/	BSW	9.5	7 1/2J	225	634	/	615	300
	225/50R17	/	98	H	XL	BSW	9.5	7J	233	658	/	750	340
	225/50R17	/	98	V	XL	BSW	9.5	7J	233	658	/	750	340
	225/55R17	/	97	H	/	BSW	9.5	7J	233	680	/	730	300
	225/55R17	/	97	V	/	BSW	9.5	7J	233	680	/	730	300
	225/65R17	/	102	S	/	BSW	9.5	6 1/2J	228	724	/	850	300
	225/65R17	/	102	T	/	BSW	9.5	6 1/2J	228	724	/	850	300
	235/45R17	/	94	H	/	BSW	9.5	8J	236	644	/	670	300
	235/45R17	/	94	V	/	BSW	9.5	8J	236	644	/	670	300
	235/55R17	/	99	H	/	BSW	9.5	7 1/2J	245	690	/	775	300
	235/65R17	/	104	S	/	BSW	9.5	7J	240	738	/	900	300
	265/65R17	/	112	S	/	BSW	9.5	8J	272	776	/	1120	300
18	215/55R18	/	99	H	XL	BSW	9.5	7J	226	693	/	775	340
	225/40R18	/	92	H	XL	BSW	9.5	8J	230	637	/	630	340
	235/40R18	/	95	V	XL	BSW	8.8	8 1/2J	241	645	/	690	340
	235/45R18	/	98	H	XL	BSW	9.5	8J	236	669	/	750	340
	235/55R18	/	104	H	XL	BSW	9.5	7 1/2J	245	715	/	900	340
	245/40R18	/	97	H	XL	BSW	9.5	8 1/2J	248	653	/	730	340
	245/45R18	/	100	H	XL	BSW	9.5	8J	243	677	/	800	340
	255/55R18	/	109	H	XL	BSW	9.5	8J	265	737	/	1030	340
19	225/40R19	/	93	V	XL	BSW	8.8	8J	230	663	/	650	340
	245/40R19	/	98	H	XL	BSW	9.5	8 1/2J	248	679	/	750	340
	245/55R19	/	103	V	/	BSW	9.5	7 1/2J	253	753	/	875	300
	245/55R19	/	103	H	/	BSW	9.5	7 1/2J	253	753	/	875	300
	255/35R19	/	96	H	XL	BSW	9.5	9J	260	661	/	710	340
	255/40R19	/	100	V	XL	BSW	8.8	9J	260	687	/	800	340
	255/50R19	/	107	H	XL	BSW	9.5	8J	265	739	/	975	340
	275/35R19	/	100	H	XL	BSW	9.5	9 1/2J	278	675	/	800	340
20	275/40R20	/	106	V	XL	BSW	8.8	9 1/2J	278	728	/	950	340
	275/45R20	/	110	V	XL	BSW	8.8	9J	273	756	/	1060	340
21	295/35R21	/	107	V	XL	BSW	8.8	10 1/2J	301	739	/	975	340

1inch=25.4mm | 1kPa=0.142psi | 1KG=2.2 lbs | XL Extra Load | LI Load Index | SS Speed Symbol

WU02

WINTER UHP STUDLESS

This studless ultra high-performance winter tire is designed with an asymmetric tread pattern which offers greater grip, handling, and braking capabilities for a more focused performance enhancement on ice and snow. The WU02 comes in 24 different sizes ranging from 18in to 21in.



SKID RESISTANT SNOW TRACTION LOW TEMPERATURE HANDING PRESENTABLE

Inner Tread Elements

Staggered narrow grooves improve traction for safer driving on ice and snow.

Outer Tread Elements

Wide shoulder blocks deliver more effective traction for enhanced braking performance when driving on ice and snow.



Interlocked Sipes

Tread blocks are separated by a dense group of jagged sipes which bite into ice and snow for improved traction. These sipes are also interlocked to enhance block stiffness for greater driving performance in wet and dry conditions.



Inner Shoulder Grooves

Jagged shoulder grooves effectively grip to ice and snow for enhanced traction.



Outer Shoulder Design

The special outside shoulder design improves grip in deep snow for overall safer driving.

RIM	SIZE	PR	LI	SR	XL OR NOT	SIDEWALL	TD (mm)	STANDARD RIM	S.W. (mm)	O.D. (mm)	UTQG	MAX.LOAD (kg)	PRESSURE (kpa)
18	225/50R18	/	99	V	XL	BSW	10.0	7J	233	683	/	775	340
	225/55R18	/	98	H	/	BSW	10.0	7J	233	705	/	750	300
	225/60R18	/	100	T	/	BSW	10.0	6 1/2J	228	727	/	800	300
	235/50R18	/	97	H	/	BSW	10.0	7 1/2J	245	693	/	730	300
	245/60R18	/	105	H	/	BSW	10.0	7J	248	751	/	925	300
	265/60R18	/	110	T	/	BSW	10.0	8J	272	775	/	1060	300
19	225/45R19	/	96	V	XL	BSW	10.0	7 1/2J	225	685	/	710	340
	225/55R19	/	99	H	/	BSW	10.0	7J	233	731	/	775	300
	235/40R19	/	96	T	XL	BSW	10.0	8 1/2J	241	671	/	710	340
	235/50R19	/	103	H	XL	BSW	10.0	7 1/2J	245	719	/	875	340
	235/55R19	/	101	H	/	BSW	10.0	7 1/2J	245	741	/	825	300
	245/45R19	/	102	V	XL	BSW	10.0	8J	243	703	/	850	340
	245/55R19	/	103	H	/	BSW	10.0	7 1/2J	253	753	/	875	300
	255/45R19	/	104	V	XL	BSW	10.0	8 1/2J	255	713	/	900	340
	255/50R19	/	107	H	XL	BSW	10.0	8J	265	739	/	975	340
	255/55R19	/	111	H	XL	BSW	10.0	8J	265	763	/	1090	340
275/40R19	/	105	V	XL	BSW	10.0	9 1/2J	278	703	/	925	340	
20	235/55R20	/	105	V	XL	BSW	10.0	7 1/2J	245	766	/	925	340
	245/50R20	/	102	H	/	BSW	10.0	7 1/2J	253	754	/	850	300
	255/45R20	/	105	T	XL	BSW	10.0	8 1/2J	255	738	/	925	340
	255/50R20	/	109	H	XL	BSW	10.0	8J	265	764	/	1030	340
	255/55R20	/	110	V	XL	BSW	10.0	8J	265	788	/	1060	340
	275/40R20	/	106	V	XL	BSW	10.0	9 1/2J	278	728	/	950	340
	275/45R20	/	110	T	XL	BSW	10.0	9J	273	756	/	1060	340
	275/50R20	/	113	V	XL	BSW	10.0	8 1/2J	284	784	/	1150	340
21	275/45R21	/	110	V	XL	BSW	10.0	9J	273	781	/	1060	340

1inch=25.4mm | 1kPa=0.142psi | 1KG=2.2 lbs | XL Extra Load | LI Load Index | SS Speed Symbol

WC01

WINTER LTC STUDLESS

A winter tire product specifically designed for commercial light trucks.



Winter Handling

The wide and jagged groove design efficiently drains snow and water out of the tire to improve handling in winter weather.

Winter Performance

The intersecting blocks, grooves, and sipes allow for more effective braking on ice and snow.

Winter Braking

The precision cut sipes enhance grip on ice and snow to allow for a safer driving experience.



Driving Comfort

The tread width and block patterns ensure a secure contact with the road surface to improve driving comfort.



RIM	SIZE	PR	LI	SR	XL OR NOT	SIDEWALL	TD (mm)	STANDARD RIM	S.W. (mm)	O.D. (mm)	UTQG	MAX.LOAD (kg)	PRESSURE (kpa)
12	155R12C	8PR	88/86	R	/	BSW	8.7	4.50B	157	550	/	560/530	450
13	155R13C	6PR	85/83	R	/	BSW	8.7	4.50B	157	578	/	515/487	350
14	185R14C	8PR	102/100	R	/	BSW	9.6	5 1/2J	188	650	/	850/800	450
	195R14C	8PR	106/104	R	/	BSW	10.0	5 1/2J	198	666	/	950/900	450
15	195R15C	8PR	106/104	R	/	BSW	10.0	5 1/2J	198	690	/	950/900	450
	195/70R15C	8PR	104/102	S	/	BSW	10.0	6J	201	655	/	900/850	450
	205/70R15C	8PR	106/104	S	/	BSW	10.0	6J	209	669	/	950/900	450
	215/70R15C	10PR	113/111	S	/	BSW	10.0	6 1/2J	221	683	/	1150/1090	525
	225/70R15C	8PR	112/110	S	/	BSW	10.0	6 1/2J	228	697	/	1120/1060	450
16	185/75R16C	8PR	104/102	R	/	BSW	9.6	5J	184	684	/	900/850	475
	195/60R16C	6PR	99/97	T	/	BSW	10.2	6J	201	640	/	775/730	375
	195/65R16C	8PR	104/102	T	/	BSW	10.0	6J	201	660	/	900/850	475
	195/75R16C	8PR	107/105	R	/	BSW	10.0	5 1/2J	196	698	/	975/925	475
	205/65R16C	8PR	107/105	T	/	BSW	10.0	6J	209	672	/	975/925	475
	205/75R16C	10PR	113/111	R	/	BSW	10.0	5 1/2J	203	714	/	1150/1090	525
	215/60R16C	8PR	108/106	T	/	BSW	10.0	6 1/2J	221	664	/	1000/950	475
	215/65R16C	8PR	109/107	T	/	BSW	10.0	6 1/2J	221	686	/	1030/975	475
	215/75R16C	10PR	116/114	R	/	BSW	10.0	6J	216	728	/	1250/1180	525
	225/65R16C	8PR	112/110	T	/	BSW	10.0	6 1/2J	228	698	/	1120/1060	475
	225/75R16C	10PR	118/116	R	/	BSW	10.0	6J	223	744	/	1320/1250	525
	235/65R16C	8PR	115/113	R	/	BSW	10.2	7J	240	712	/	1215/1150	475
	285/65R16C	10PR	128	N	/	BSW	10.2	8 1/2J	292	776	/	1800	525

1inch=25,4mm | 1kPa=0.142psi | 1KG=2.2 lbs | XL Extra Load | LI Load Index | SS Speed Symbol

WCS01

WINTER LTC STUDDABLE

The WCS01 is a studdable winter tire designed for drivers that demand maximum traction in severe winter weather conditions, letting you outperform the elements to get more out of the winter season.



V-shaped Tread Design

Improved grip on ice and snow, skid resistance, and effectively reduces noise emissions.

Sipe Design

Optimized depth and length of sipes maintain tread rigidity and greatly enhance grip and handling.



Improved Studded Technology

12 rows of studs are designed to maximize grip and traction performance for safer driving in winter weather.



Special Buffer Layer

Special rubber buffer layer at the bottom of the stud absorbs the impact force of snow to prevent studs from falling out.



Innovative Square Design

Increases the ground contact area of the tire to effectively improve grip performance and increase skid resistance.



RIM	SIZE	PR	LI	SR	XL OR NOT	SIDEWALL	TD (mm)	STANDARD RIM	S.W. (mm)	O.D. (mm)	UTQG	MAX.LOAD (kg)	PRESSURE (kpa)
14	175/65R14C	6PR	90/88	Q	/	BSW	10.0	5J	177	584	/	600/560	375
	185R14C	8PR	102/100	Q	/	BSW	10.0	5 1/2J	188	650	/	850/800	450
15	195/70R15C	8PR	104/102	Q	/	BSW	10.5	6J	201	655	/	900/850	450
	225/70R15C	8PR	112/110	Q	/	BSW	10.5	6 1/2J	228	697	/	1120/1060	450
	205/70R15C	8PR	106/104	R	/	BSW	10.5	6J	209	669	/	950/900	450
	215/70R15C	8PR	109/107	R	/	BSW	10.5	6 1/2J	221	683	/	1030/975	450
16	205/65R16C	8PR	107/105	Q	/	BSW	10.5	6J	209	672	/	975/925	475
	195/60R16C	6PR	99/97	S	/	BSW	10.5	6J	201	640	/	775/730	375
	215/65R16C	8PR	109/107	R	/	BSW	10.5	6 1/2J	221	686	/	1030/975	475
	195/65R16C	8PR	104/102	R	/	BSW	10.5	6J	201	660	/	900/850	475
	235/65R16C	8PR	115/113	R	/	BSW	10.5	7J	240	712	/	1215/1150	475
	205/75R16C	8PR	110/108	R	/	BSW	10.5	5 1/2J	203	714	/	1060/1000	475
	215/75R16C	8PR	113/111	R	/	BSW	10.5	6J	216	728	/	1150/1090	475
	225/65R16C	8PR	112/110	R	/	BSW	10.5	6 1/2J	228	698	/	1120/1060	475
	195/75R16C	8PR	107/105	Q	/	BSW	10.5	5 1/2J	196	698	/	975/925	475

1inch=25,4mm | 1kPa=0.142psi | 1KG=2.2 lbs | XL Extra Load | LI Load Index | SS Speed Symbol

WH12

WINTER HP STUDDABLE

The WH12 is a studdable winter tire designed for drivers that demand maximum traction in severe winter weather conditions, letting you outperform the elements to get more out of the winter season.



V-shaped Tread Design

Improved grip on ice and snow, skid resistance, and effectively reduces noise emissions.



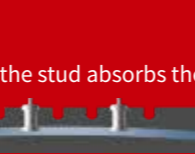
Sipe Design

Optimized sipe design ensures great grip on ice and snow.



Improved Studded Technology

12 rows of studs are designed to maximize grip and traction performance for safer driving in winter weather.



Special Buffer Layer

Special rubber buffer layer at the bottom of the stud absorbs the impact force of snow to prevent studs from falling out.



Innovative Square Design

Increases the ground contact area of the tire to effectively improve grip performance and increase skid resistance.



RIM	SIZE	PR	LI	SR	XL OR NOT	SIDEWALL	TD (mm)	STANDARD RIM	S.W. (mm)	O.D. (mm)	UTQG	MAX.LOAD (kg)	PRESSURE (kpa)	
13	155/70R13	/	75	T	/	BSW	10.0	4.50B	157	548	/	387	300	
	155/80R13	/	79	T	/	BSW	10.0	4.50B	157	578	/	437	300	
	165/70R13	/	79	T	/	BSW	10.0	5.00B	170	562	/	437	300	
	175/70R13	/	82	T	/	BSW	10.0	5.00B	177	576	/	475	300	
14	155/65R14	/	75	T	/	BSW	10.0	4 1/2J	157	558	/	387	300	
	165/65R14	/	79	T	/	BSW	10.0	5J	170	570	/	437	300	
	175/65R14	/	82	T	/	BSW	10.0	5J	177	584	/	475	300	
	175/70R14	/	84	T	/	BSW	10.0	5J	177	602	/	500	300	
	185/60R14	/	82	T	/	BSW	10.0	5 1/2J	189	578	/	475	300	
	185/65R14	/	86	T	/	BSW	10.0	5 1/2J	189	596	/	530	300	
	185/70R14	/	88	T	/	BSW	10.0	5 1/2J	189	616	/	560	300	
	175/65R15	/	84	T	/	BSW	10.0	5J	177	609	/	500	300	
15	185/55R15	/	82	T	/	BSW	10.0	6J	194	585	/	475	300	
	185/60R15	/	84	T	/	BSW	10.0	5 1/2J	189	603	/	500	300	
	185/65R15	/	88	T	/	BSW	10.0	5 1/2J	189	621	/	560	300	
	195/60R15	/	88	T	/	BSW	10.0	6J	201	615	/	560	300	
	195/65R15	/	91	T	/	BSW	10.0	6J	201	635	/	615	300	
	205/65R15	/	94	T	/	BSW	10.0	6J	209	647	/	670	300	
	205/70R15	/	96	T	/	BSW	10.0	6J	209	669	/	710	300	
	215/65R15	/	96	T	/	BSW	10.0	6 1/2J	221	661	/	710	300	
	215/70R15	/	98	T	/	BSW	10.0	6 1/2J	221	683	/	750	300	
	235/75R15	/	105	S	/	BSW	11.0	6 1/2J	235	733	/	925	300	
	16	205/50R16	/	87	T	/	BSW	10.0	6 1/2J	214	612	/	545	300
		205/55R16	/	91	T	/	BSW	10.0	6 1/2J	214	632	/	615	300
205/60R16		/	92	T	/	BSW	10.0	6J	209	652	/	630	300	
205/65R16		/	95	T	/	BSW	10.0	6J	209	672	/	690	300	
215/55R16		/	97	H	XL	BSW	10.0	7J	226	642	/	730	340	
215/60R16		/	95	T	/	BSW	10.0	6 1/2J	221	664	/	690	300	
215/65R16		/	98	T	/	BSW	10.0	6 1/2J	221	686	/	750	300	
215/70R16		/	100	T	/	BSW	11.0	6 1/2J	221	708	/	800	300	
225/60R16		/	98	T	/	BSW	10.0	6 1/2J	228	676	/	750	300	
225/65R16		/	100	T	/	BSW	10.0	6 1/2J	228	698	/	800	300	
225/70R16		/	103	H	/	BSW	11.0	6 1/2J	228	722	/	875	300	
235/70R16		/	106	T	/	BSW	11.0	7J	240	736	/	950	300	
245/70R16		/	107	T	/	BSW	11.0	7J	248	750	/	975	300	
245/75R16		/	111	S	/	BSW	11.0	7J	248	774	/	1090	300	
17	215/45R17	/	91	T	XL	BSW	10.0	7J	213	626	/	615	340	
	215/50R17	/	95	T	XL	BSW	10.0	7J	226	648	/	690	340	
	215/55R17	/	94	T	/	BSW	11.0	7J	226	668	/	670	300	
	215/60R17	/	96	H	/	BSW	10.0	6 1/2J	221	690	/	710	300	
	215/65R17	/	99	T	/	BSW	11.0	6 1/2J	221	712	/	775	300	
	225/45R17	/	94	H	XL	BSW	10.0	7 1/2J	225	634	/	670	340	
	225/50R17	/	98	H	XL	BSW	10.0	7J	233	658	/	750	340	
	225/55R17	/	97	T	/	BSW	11.0	7J	233	680	/	730	300	
	225/60R17	/	99	H	/	BSW	10.0	6 1/2J	228	702	/	775	300	
	225/65R17	/	102	S	/	BSW	11.0	6 1/2J	228	724	/	850	300	
	235/45R17	/	97	T	XL	BSW	10.0	8J	236	644	/	730	340	
	235/55R17	/	99	V	/	BSW	10.0	7 1/2J	245	690	/	775	300	
	235/60R17	/	102	H	/	BSW	10.0	7J	240	714	/	850	300	
	235/65R17	/	104	T	/	BSW	11.0	7J	240	738	/	900	300	
18	245/65R17	/	107	T	/	BSW	11.0	7J	248	750	/	975	300	
	265/65R17	/	112	T	/	BSW	11.0	8J	272	776	/	1120	300	
	265/70R17	/	115	S	/	BSW	11.0	8J	272	804	/	1215	300	
	215/55R18	/	95	T	/	BSW	10.0	7J	226	693	/	690	300	
	225/40R18	/	92	H	XL	BSW	10.0	8J	230	637	/	630	340	
	225/45R18	/	95	T	XL	BSW	10.0	7 1/2J	225	659	/	690	340	
	225/55R18	/	98	T	/	BSW	10.0	7J	233	705	/	750	300	
	225/60R18	/	100	T	/	BSW	10.0	6 1/2J	228	727	/	800	300	
	235/50R18	/	101	T	XL	BSW	10.0	7 1/2J	245	693	/	825	340	
	235/55R18	/	100	H	/	BSW	11.0	7 1/2J	245	715	/	800	300	
19	235/60R18	/	103	H	/	BSW	10.0	7J	240	739	/	875	300	
	245/45R18	/	100	H	XL	BSW	10.0	8J	243	677	/	800	340	
	255/55R18	/	105	V	/	BSW	10.0	8J	265	737	/	925	300	
	235/55R19	/	101	H	/	BSW	10.0	7 1/2J	245	741	/	825	300	
	255/50R19	/	107	H	XL	BSW	10.0	8J	265	739	/	975	340	
	20	275/40R20	/	106	H	XL	BSW	11.0	9 1/2J	278	728	/	950	340